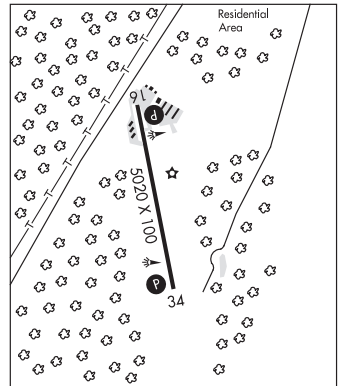


CHESTER

ROGERS FLD (OØ5) 2 SW UTC-8(-7DT) N40°16.94' W121°14.47'
 4534 B NOTAM FILE RIU
RWY 16-34: H5020X100 (ASPH) S-60, D-110 MIRL 0.4% up N
RWY 16: PAPI(P2L)—GA 3.0° TCH 45'. Trees.
RWY 34: PAPI(P2L)—GA 3.0° TCH 32'. Trees. Rgt tfc.
SERVICE: FUEL 100LL, JET A LGT ACTIVATE MIRL Rwy 16-34 and
 PAPI Rwy 16 and Rwy 34—CTAF.
AIRPORT REMARKS: Attended 1600Z±-dusk.
AIRPORT MANAGER: 530-283-6299
WEATHER DATA SOURCES: AWOS-3 118.275 (530) 258-2860.
COMMUNICATIONS: CTAF/UNICOM 122.8
CLEARANCE DELIVERY PHONE: For CD ctc Oakland ARTCC at 510-745-3380.
RADIO AIDS TO NAVIGATION: NOTAM FILE RBL.
RED BLUFF (H) VORTACW 115.7 RBL Chan 104 N40°05.93'
 W122°14.18' 058° 47.1 NM to fld. 321/18E. **HIWAS.**
 VOR portion unusable:
 280°-300° blo 3,500'

KLAMATH FALLS
 H-3B, L-2H, 11A



CHICO MUNI (CIC)(KCIC) 4 N UTC-8(-7DT) N39°47.72' W121°51.51'
 240 B TPA—See Remarks Class III, ARFF Index A NOTAM FILE CIC
RWY 13L-31R: H6724X150 (ASPH-GRVD) S-63, D-100, 2S-127,
 2D-170 PCN 20 F/B/X/T HIRL 0.5% up NW
RWY 13L: MALSR. PAPI(P4L)—GA 3.0° TCH 52'. Rgt tfc.
RWY 31R: REIL. VASI(V4L)—GA 3.0° TCH 54'.
RWY 13R-31L: H3000X60 (ASPH) S-12.5 0.4% up NW
RWY 13R: Rgt tfc.

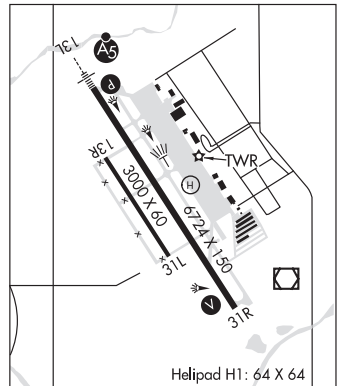
SAN FRANCISCO
 H-3B, L-2G/H
 IAP, AD

RUNWAY DECLARED DISTANCE INFORMATION

RWY 13L: TORA-6724 TODA-6724 ASDA-6724 LDA-6724
RWY 13R: TORA-3000 TODA-3000 ASDA-3000 LDA-3000
RWY 31L: TORA-3000 TODA-3000 ASDA-3000 LDA-3000
RWY 31R: TORA-6724 TODA-6724 ASDA-6724 LDA-6724

SERVICE: S4 FUEL 100LL, JET A OX3 LGT When twr clsd ACTIVATE
 HIRL Rwy 13L-31R, VASI Rwy 31R and MALSR and PAPI Rwy
 13L-121.0.

AIRPORT REMARKS: Attended 1500-0300Z±. Fuel avbl 1530-0300Z±. For
 fuel after hrs call 530-588-4888. Birds on and invof arpt. PPR for
 scheduled air carrier svc involving acft with more than 9 passenger
 seats and unscheduled air carrier svc involving acft with more than 30
 passenger seats. Without PPR, ARFF svcs may not be avbl. For PPR ctc
 arpt mgr 530-896-7216. For jet/heavy acft opr E of fld
 TPA—1740(1500), for light acft opr W and E of fld TPA—1240(1000). Rwy 13R-31L is part of an asph pad
 3000' X 1500'. Twy Z CLOSED. North windcone unavbl indef.
AIRPORT MANAGER: 530-896-7216



WEATHER DATA SOURCES: AWOS-3 119.675 (530) 879-3850. LAWRS.
COMMUNICATIONS: CTAF 121.0 ATIS 119.675 UNICOM 122.95
 RCO 122.1R 109.8T (RANCHO MURIETA RADIO)

Ⓡ OAKLAND CENTER APP/DEP CON 132.2

TOWER 121.0 (1500-0300Z±) **GND CON** 121.9
AIRSPACE: CLASS D svc 1500-0300Z±; other times CLASS G.
RADIO AIDS TO NAVIGATION: NOTAM FILE CIC.

(T) VOR/DME 109.8 CIC Chan 35 N39°47.39' W121°50.83' at fld. 215/16E.
 ILS 111.3 I-CIC Rwy 13L. Class IE. Unmonitored when ATCT closed.
COMM/NAV/WEATHER REMARKS: Emerg frequency 121.5 not avbl at twr.

• • • • •
HELIPAD H1: H64X64 (CONC) S-35