

SIERRA VISTA MUNI—LIBBY AAF (FHU)(KFHU) MIL/CIV A 3 N UTC-7 N31°35.31' W110°20.66'

PHOENIX

4719 B TPA—See Remarks Class IV, ARFF Index A NOTAM FILE FHU

H-4K, L-5C

RWY 08-26: H12001X150 (CONC) S-75, D-200, 2D-450,
2D/2D2-700 PCN 54 R/B/W/T HIRL 1.0% up W

RWY 08: PAPI(P4L)—GA 3.0° TCH 50'.

RWY 26: PAPI(P4L)—GA 3.0° TCH 80'. Rgt tfc.

RWY 12-30: H5366X100 (ASPH-CONC) S-46, D-106, 2D-137,
2D/2D2-172 PCN 24 F/A/W/T MIRL

RWY 12: PAPI(P4L)—GA 3.0° TCH 51'.

RWY 30: PAPI(P2R)—GA 3.0° TCH 51'. Rgt tfc.

RWY 03-21: H4285X75 (ASPH-CONC) PCN 22 F/A/W/T MIRL
2.0% up SW

RWY 03: Thld dspcd 1253'.

RWY 21: Rgt tfc.

RUNWAY DECLARED DISTANCE INFORMATION

RWY 03: TORA-4285 TODA-4285 ASDA-4285 LDA-3032

RWY 08: TORA-12001 TODA-12001 ASDA-12001 LDA-12001

RWY 12: TORA-5366 TODA-5366 ASDA-5366 LDA-5366

RWY 21: TORA-4285 TODA-4285 ASDA-4285 LDA-4285

RWY 26: TORA-12001 TODA-12001 ASDA-12001 LDA-12001

RWY 30: TORA-5366 TODA-5366 ASDA-5366 LDA-5366

SERVICE: FUEL 100, JET A LGT ACTIVATE PAPI Rwy 08, 26, 12 and

30, HIRL Rwy 08-26, MIRL Rwy 03-21 and 12-30 and perimeter lgt H1-CTAF. FUEL Avbl 1430-2130Z dly, OT

C520-234-3552 (Svc fee). POL svc rqr crew member attend to specify fuel/oil rqr. Fuel ltd to 6000 gal. J8, (NC-100,
A) **TRAN ALERT** Tran acct, ctc Libby ATC or Base OPS to coord prk.

AIRPORT REMARKS: Attended 1400-0000Z Mon-Sun. Fuel avbl 1430-2130Z 7 days/wk, after hrs call 520-234-3552 (svc fee). Joint-use civ-mil arpt, extv mil jet ops wkdays. Bird haz invof all rwys on tkfs and apchs. Deer on and invof all rwys and twys especially at ngt. When Class D airspace in effect unmanned aerial vehicles opr sfc to 7000' MSL. Bird haz exists all rwys. Airspace Class D sfc area ltd to dep and full stop lds only dur ngt time unmanned acct ops. Exp possible delays. Manned and unmanned acct not authorized in the same tfc pat. Arriving manned acct may follow unmanned acct on final. Civ tfc pat not avbl dur daytime unmanned acct tfc pat ops. Dep and full stop ldt authorized. Exp wind shear on apch to all rwys. Civ acct PPR to enter mil ramp. Non scheduled arriving acct rqr assistance, ctc GOC 533-2291/2292. TPA—fixed wing acct north and rotary wing south TPA fixed wing reciprocating 5700(981), rotary wing 5500(781), fixed wing turboprop/jet 6200(1481). Twy G and Twy J ltd to single wheel acct max 33,000 lbs, Twy K ltd to single wheel acct max 50,000 lbs; Twy D and acct apron on NW side ltd to dual wheels acct max 100,000 lbs. Circling not authorized south of Rwy 08 and Rwy 30. Rwy 8, PAR not coincident with PAPI due to TCH diff of greater than 3'. PAR TCH:41' PAPI TCH: 50.3'. RWY 26, PAR not coincident with PAPI due to TCH diff of greater than 3'. PAR TCH 49.8' / PAPI TCH: 80.3'. NOTE: See Special Notices—Tethered Areostat Radar System (TARS).

MILITARY REMARKS: Opr Sun-Sat 0600-0600Z, exc hol, other times 72 hr PPR DSN 879-2860/2862,

C520-538-2860/2862. See FLIP AP/1 Supplementary Arpt Remarks. **RSTD** 24 hr PPR for all tran mil acct. Civ acct PPR to enter mil ramp. Twy G ltd to single wheel acct max 33,000 lbs, Twy K ltd to single wheel acct max 50,000 lbs. Circling not authorized South of Rwy 08 and Rwy 30. **CAUTION** Exp wind shear on apch to all rwy, arpt SW wind may not be representative of wind on final apch. Extv mil jet ops wkdays. **CSTMS/AG/IMG** Avbl with 72 hr PN for US mil or DoD contract acct only. **TFC PAT** TPA Fixed wing unmanned acct 5700(981). Do not exceed 5700' until dep end of rwy. **MISC** All tran and remain overnight acct using mil side must sign in at base ops prior to dep fit line. 72 hr PPR for use of assault strip lctd 5 NM NE. Non-scheduled arr acct rqr assistance ctc EOC 533-2291. All acct using mil tran parking sign in at base ops prior to leaving fit line. Wx obsn/forecast 0600-0600Z Sun-Fri, exc hol, ASOS other times. Libby wx avbl on 122.95. DSN 879-3798/2865. C520-538-3798/2865. Remote briefing svc avbl 25 OWS Davis-Monthan AFB DSN 228-6598/6599/6588, C520-228-6598/6599/6588, or HTTPS://25OWS.US.AF.MIL. A Libby Base OPS opr Sun-Sat 0600-0600Z, exc hol other times 72 hr PPR. DSN 879-2860/2862, C520-538-2860/2862.

AIRPORT MANAGER: 520-458-5775

WEATHER DATA SOURCES: ASOS

COMMUNICATIONS: CTAF 124.95 ATIS 134.75 263.025 UNICOM 122.95

Ⓡ **LIBBY AAF GCA APP/DEP CON** 127.05 254.35 (0600Z Sun-0600Z Sat, exc hol) other times by NOTAM, other times ctc

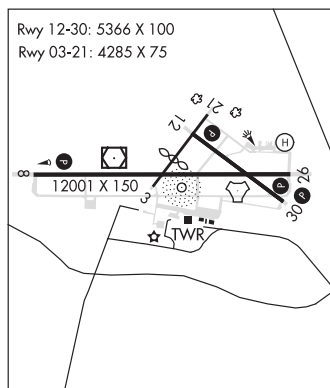
Ⓡ **ALBUQUERQUE CENTER APP/DEP CON** 134.45 327.15

LIBBY TOWER 124.95 284.75 (0600Z Sun-0600Z Sat, exc hol) other times by NOTAM.

GND CON 121.7 268.7

LIBBY OPS 122.95

AIRSPACE: CLASS D svc Sun 0600-Sat 0600Z exc hol, other times by NOTAM; other times CLASS G.



CONTINUED ON NEXT PAGE

CONTINUED FROM PRECEDING PAGE

RADIO AIDS TO NAVIGATION: NOTAM FILE DUG.

DOUGLAS (L) VORTACW 108.8 DUG Chan 25 N31°28.36' W109°36.12' 268° 38.7 NM to fld. 4131/13E.

DME & TACAN AZIMUTH unusable:
045°-065° byd 26 NM blo 10,000'
065°-095° byd 28 NM blo 9,500'
355°-010° byd 35 NM blo 11,300'

LIBBY (T) VORW/DME 113.6 FHU Chan 83 N31°35.38' W110°21.30' at fld. 4665/13E. NOTAM FILE FHU.
VOR unmonitored when GCA clsd.

military use: No NOTAM MP 1200-1500Z 4th Thurs of month
VOR unusable:
110°-235° byd 10 NM

DME unusable:
110°-235° byd 10 NM

FORT HUACHUCA (T) TACAN Chan 53 ARH (111.6) N31°35.13' W110°20.34' at fld. 4660/12E. NOTAM FILE
FHU. unmonitored when twr clsd.

TACAN unusable:
105°-250° byd 10 NM
120°-300° byd 20 NM

military use: No NOTAM MP 1200-1500Z 1st Thursday of month

DRAGOO NDB (MHW) 410 DAO N31°35.14' W110°20.66' at fld. 4654/13E. NOTAM FILE FHU. NDB
unmonitored when GCA closed. SHUTDOWN.

No NOTAM MP: 1500-1900Z 2nd Thurs of month

ILS 109.9 I-FHU Rwy 26. Class I E. Unmonitored when GCA clsd. No NOTAM MP 1200-1500Z 2nd Thursday of month.

ASR/PAR (0700Z Mon-0600Z Sat, except holidays, other times by NOTAM). PAR: No NOTAM MP 1200-1500Z 3rd Thursday of month.

COMM/NAV/WEATHER REMARKS: For emerg, freq 121.5 monitored when twr clsd. USAF wx forecast avbl 1200-0300Z from Davis Monthan AFB. Radar see Terminal FLIP for Radar Minima.

• • • • •

HELIPAD H1: H40X40 (ASPH) PERIMETER LGTS

HELIPORT REMARKS: ACTIVATE perimeter lgts Helipad H1-CTAF.

SPRINGVILLE MUNI (JTC)(KJTC) 1 W UTC-7 N34°07.77' W109°18.65'
7055 B NOTAM FILE PRC

PHOENIX
H-4K, L-5D
IAP

RWY 03-21: H8422X75 (ASPH) S-30 MIRL

RWY 03: PAPI(P2L)-GA 4.0° TCH 46'. Fence. 0.4% down.

RWY 21: PAPI(P2L)-GA 3.0° TCH 35'. Fence. Rgt tfc. 0.6% up.

RWY 11-29: H4603X60 (ASPH) S-19 MIRL

RWY 11: PAPI(P2L)-GA 3.0° TCH 35'.

SERVICE: FUEL 100LL, JET A+ LGT Rwy 03 PAPI does not provide
obstacle clearance 2 NM byd thld. ACTIVATE MIRL Rwy 03-21, MIRL
Rwy 11-29, PAPI Rwy 03, Rwy 11 and Rwy 21-CTAF. (NSTD) 5
clicks on, 7 clicks off.

AIRPORT REMARKS: Attended Fri-Tue 1500-2300Z. For fuel after hrs call
928-245-0151. Mil tfc near arpt. Wildlife on and invof arpt. Density
indicators located on rwy ends and at fuel pumps. Indicators on Rwy 3,
Rwy 11 and Rwy 29 are out of svc indef.

AIRPORT MANAGER: 928-333-5746

WEATHER DATA SOURCES: AWOS-3PT 119.65 (928) 333-5716.

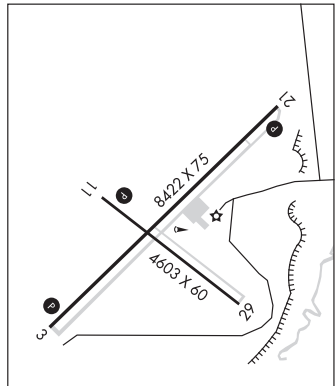
COMMUNICATIONS: CTAF/UNICOM 122.8

Ⓡ ALBUQUERQUE CENTER APP/DEP CON 132.9

CLEARANCE DELIVERY PHONE: For CD ctc Albuquerque ARTCC at
505-856-4861.

RADIO AIDS TO NAVIGATION: NOTAM FILE SJN.

ST JOHNS (H) VORTAC 112.3 SJN Chan 70 N34°25.44' W109°08.61' 193° 19.5 NM to fld. 6840/12E.



STANFIELD N32°53.15' W111°54.52' NOTAM FILE PRC.
(H) VORTAC 114.8 TFD Chan 95 048° 8.3 NM to Casa Grande Muni. 1316/12E.
RCO 122.1R 114.8T (PRESCOTT RADIO)

PHOENIX
H-4I, L-5B, A

STELLAR AIRPARK (See CHANDLER on page 35)

SUN VALLEY (See BULLHEAD CITY on page 33)