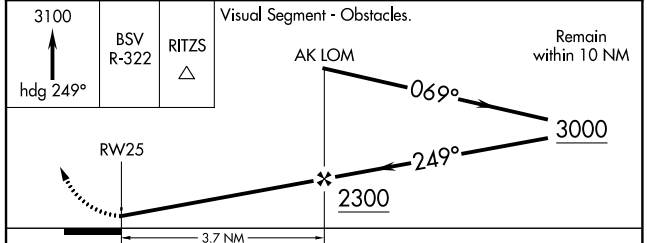
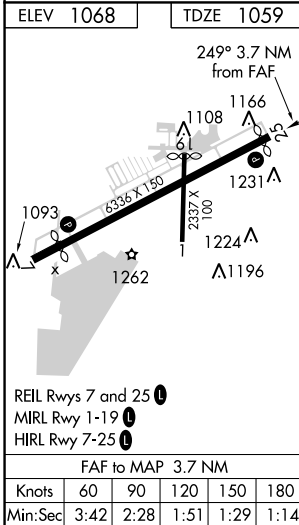
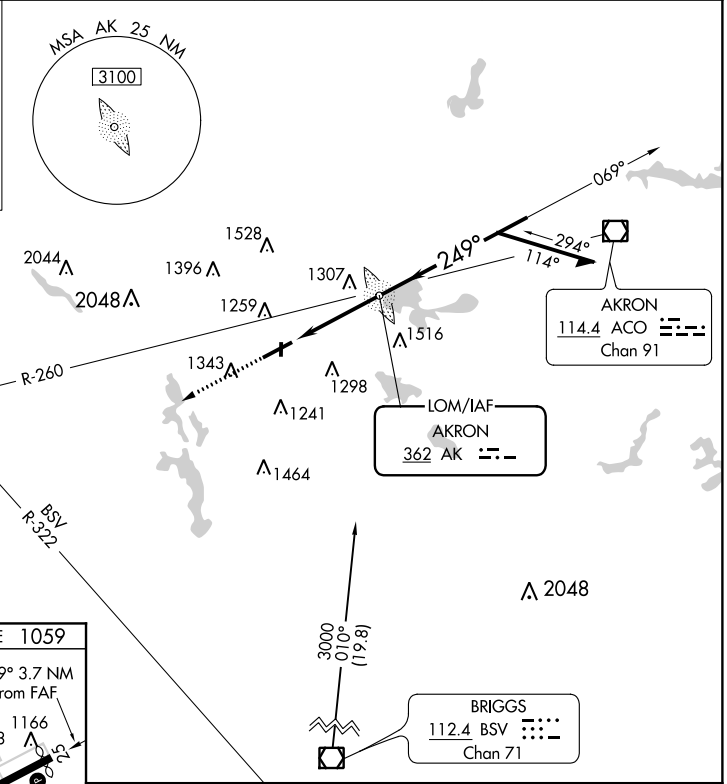
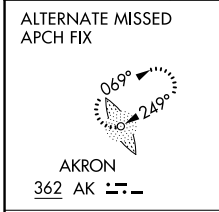


LOM AK <b>362</b>	APP CRS <b>249°</b>	Rwy Idg TDZE Apt Elev	<b>6077</b> <b>1059</b> <b>1068</b>
----------------------	------------------------	-----------------------------	---

# NDB RWY 25

AKRON FULTON INTL (AKR)

<p><b>▼</b> <b>▲</b> Rwy 25 helicopter visibility reduction below 1 SM NA.</p>		<p>MISSED APPROACH: Climb to 3100 on heading 249° and BSV VOR/DME R-322 to RITZS INT/BSV 21.2 DME and hold.</p>	
ASOS <b>126.825</b>	CLEVELAND APP CON * <b>118.6 371.875</b>	CLNC DEL <b>121.6</b>	UNICOM <b>123.075</b> (CTAF) <b>①</b>



CATEGORY	A	B	C	D
S-25	1620-1	561 (600-1)	1620-1½	561 (600-1½)
<b>☑</b> CIRCLING	1620-1 552 (600-1)	1680-1 612 (700-1)	1800-2 732 (800-2)	1840-2½ 772 (800-2½)

EC-2, 10 OCT 2019 to 07 NOV 2019

EC-2, 10 OCT 2019 to 07 NOV 2019