

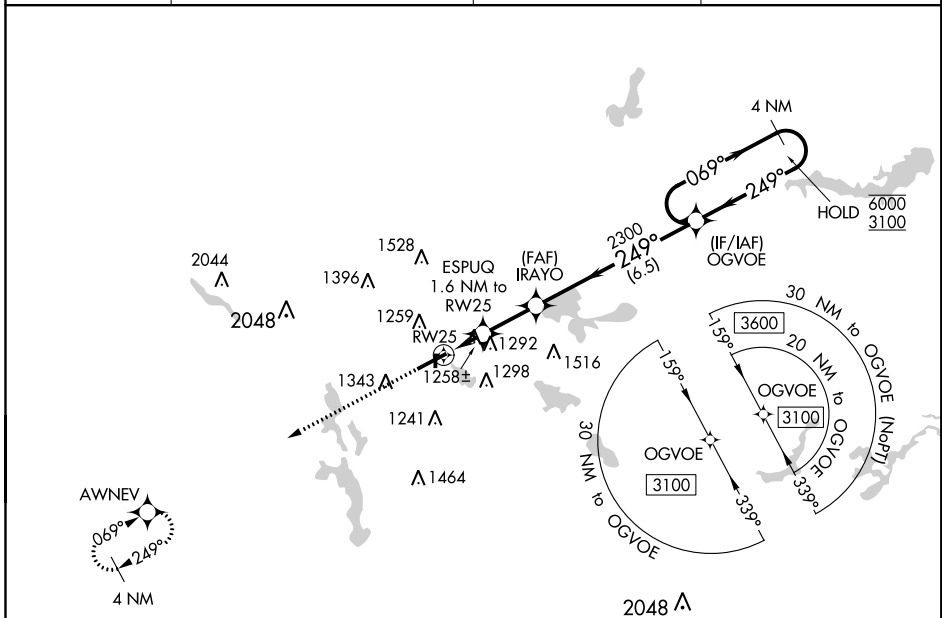
WAAS CH 99735 W25A	APP CRS 249°	Rwy Idg TDZE Apt Elev	6077 1059 1068
--	------------------------	-----------------------------	---

RNAV (GPS) RWY 25

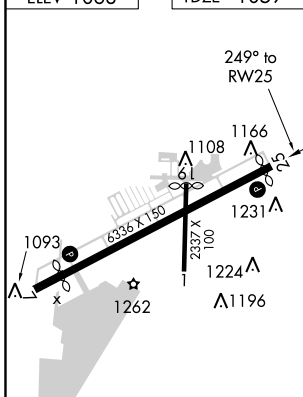
AKRON FULTON INTL (AKR)

RNP APCH.	MISSED APPROACH: Climb to 3100 direct AWNEV and hold.
Rwy 25 helicopter visibility reduction below 1 SM NA.	

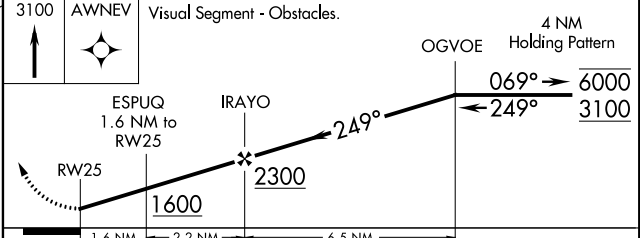
ASOS 126.825	CLEVELAND APP CON ★ 118.6 371.875	CLNC DEL 121.6	UNICOM 123.075 (CTAF)
------------------------	---	--------------------------	---------------------------------



ELEV 1068	TDZE 1059
-----------	-----------



3100	AWNEV	Visual Segment - Obstacles.	4 NM
			OGVOE Holding Pattern



CATEGORY	A	B	C	D
LP MDA	1520-1	461 (500-1)	1520-1 3/8	461 (500-1 3/8)
LNVA MDA	1560-1	501 (500-1)	1560-1 3/8	501 (500-1 3/8)
CIRCLING	1600-1 532 (600-1)	1680-1 612 (700-1)	1800-2 732 (800-2)	1840-2 1/2 772 (800-2 1/2)

REIL Rwy 7 and 25
MIRL Rwy 1-19
HIRL Rwy 7-25

AKRON FULTON INTL (AKR)

RNAV (GPS) RWY 25

EC-2, 10 OCT 2019 to 07 NOV 2019

EC-2, 10 OCT 2019 to 07 NOV 2019