

# ILS or LOC RWY 13

LEHIGH VALLEY INTL (ABE)

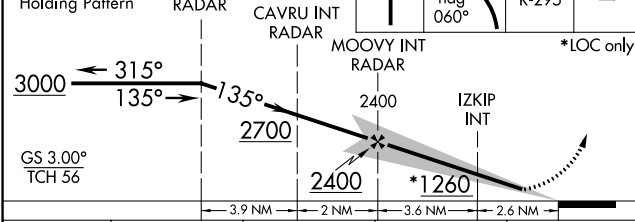
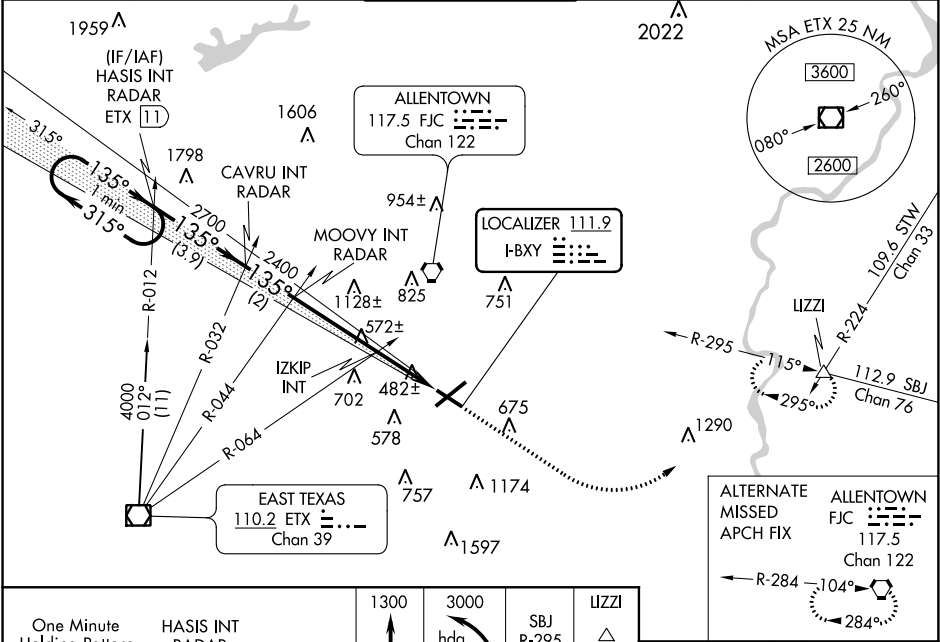
LOC I-BXY <b>111.9</b>	APP CRS <b>135°</b>	Rwy Idg TDZE Apt Elev	<b>5800</b> <b>386</b> <b>394</b>
---------------------------	------------------------	-----------------------------	-----------------------------------------

**⚠** For inoperative MALSR, increase IZKIP fix minimums S-LOC 13 Cat C/D visibility to 1 mile.

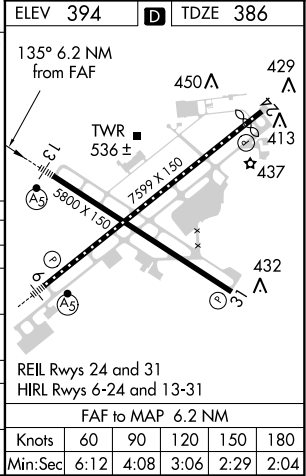


**MISSED APPROACH:** Climb to 3000 then climbing left turn to 3000 on heading 060° and on SBJ VOR/DME R-295 to IZZI INT and hold.

ATIS <b>126.975</b>	ALLENTOWN APP CON <b>119.65 124.45 351.8</b>	<b>ALLENTOWN TOWER</b> <b>120.5 257.95</b>	GND CON <b>121.9 257.95</b>	CLNC DEL <b>124.05 257.95</b>
------------------------	-------------------------------------------------	-----------------------------------------------	--------------------------------	----------------------------------



CATEGORY	A	B	C	D
S-ILS 13	586-1/2 200 (200-1/2)			
S-LOC 13	1260-1/2 874 (900-1/2)	1260-3/4 874 (900-3/4)	1260-2	874 (900-2)
<b>C</b> CIRCLING	1260-1 1/4	866 (900-1 1/4)	1260-2 1/2 866 (900-2 1/2)	1600-3 1206 (1300-3)
<b>IZKIP FIX MINIMUMS (DUAL VOR RECEIVERS REQUIRED)</b>				
S-LOC 13	740-1/2	354 (400-1/2)	740-5/8	354 (400-5/8)
<b>C</b> CIRCLING	840-1 446 (500-1)	900-1 506 (600-1)	1180-2 1/4 786 (800-2 1/4)	1600-3 1206 (1300-3)



NE-4, 10 OCT 2019 to 07 NOV 2019

NE-4, 10 OCT 2019 to 07 NOV 2019