

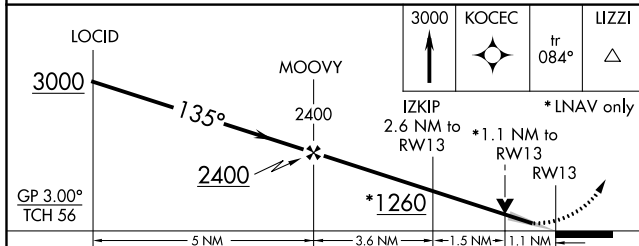
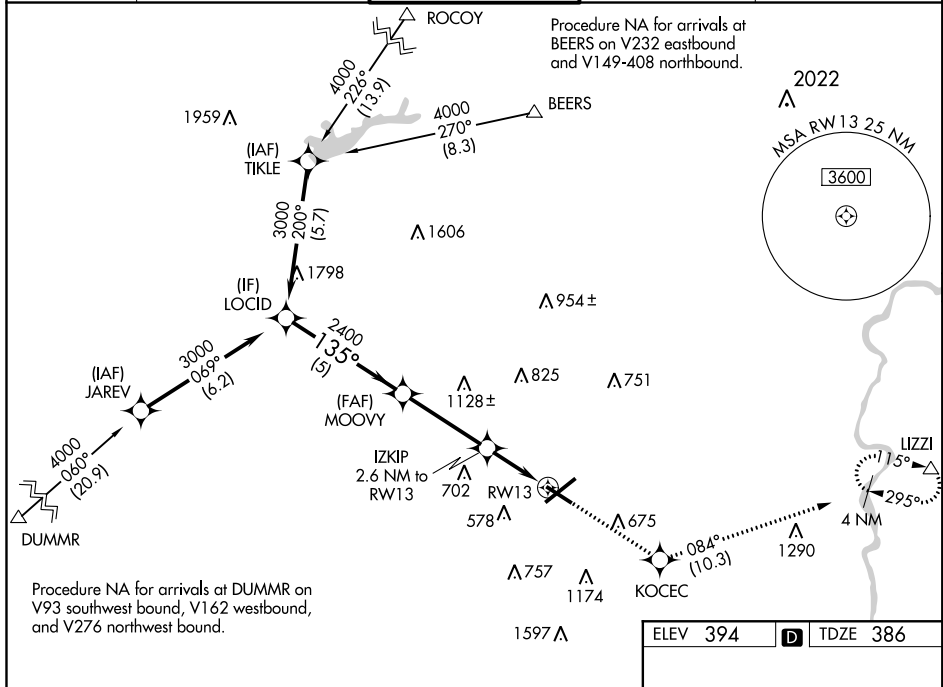
WAAS CH <b>82532</b> <b>W13A</b>	APP CRS <b>135°</b>	Rwy Idg TDZE <b>386</b> Apt Elev <b>394</b>	<b>5800</b>
--	------------------------	---	-------------

# RNAV (GPS) RWY 13

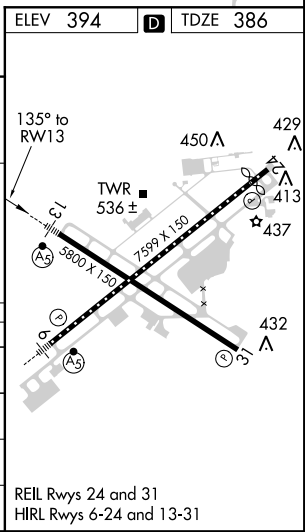
LEHIGH VALLEY INTL (ABE)

<p><b>V</b> For uncompensated Baro-VNAV systems, LNAV/VNAV NA below -16°C (4°F) or above 54°C (130°F). DME/DME RNP-0.3 NA. For inoperative MALSr, increase LNAV Cat C/D visibility to 1½ mile.</p>	<p>MALSr</p>	<p>MISSED APPROACH: Climb to 3000 direct KOCEC and on track 084° to LIZZI and hold.</p>
		<p>AS</p>

ATIS <b>126.975</b>	ALLENTOWN APP CON <b>119.65 124.45 351.8</b>	ALLENTOWN TOWER <b>120.5 257.95</b>	GND CON <b>121.9 257.95</b>	CLNC DEL <b>124.05 257.95</b>
------------------------	---	--	--------------------------------	----------------------------------



CATEGORY	A	B	C	D
LPV DA		586-½	200 (200-½)	
LNAV/VNAV DA		700-½	314 (400-½)	
LNAV MDA	800-½	414 (500-½)	800-¾	414 (500-¾)
<b>C</b> CIRCLING	900-1	506 (600-1)	1180-2¼ 786 (800-2¼)	1600-3 1206 (1300-3)



NE-4, 10 OCT 2019 to 07 NOV 2019

NE-4, 10 OCT 2019 to 07 NOV 2019