

WAAS CH 69432 W06A	APP CRS 063°	Rwy Idg TDZE 394 Apt Elev 394	7599
--	------------------------	---	-------------

RNAV (GPS) RWY 6

LEHIGH VALLEY INTL (ABE)

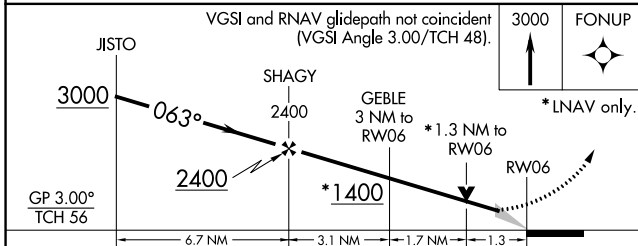
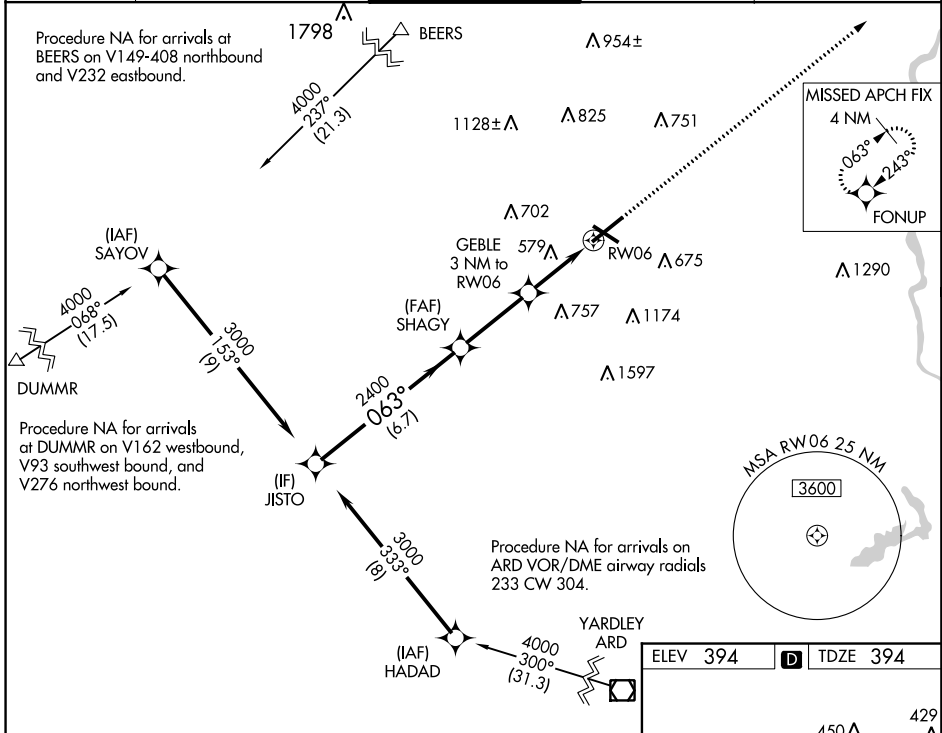
RNP APCH.

For uncompensated Baro-VNAV systems, LNAV/VNAV NA below -8°C (18°F) or above 54°C (130°F). For inop ALS, increase LNAV Cat C/D visibility to 1 3/8 SM.
 **RVR 1800 authorized with use of FD or AP or HUD to DA.

MALSR

MISSED APPROACH: Climb to 3000 direct FONUP and hold.

ATIS 126.975	ALLENTOWN APP CON 119.65 124.45 351.8	ALLENTOWN TOWER 120.5 257.95	GND CON 121.9 257.95	CLNC DEL 124.05 257.95
------------------------	---	--	--------------------------------	----------------------------------



CATEGORY	A	B	C	D
LPV DA **	594/24		200 (200-1/2)	
LNAV/DA VNAV	644/24		250 (300-1/2)	
LNAV MDA	840/24 446 (500-1/2)		840/45 446 (500-7/8)	
CIRCLING	900-1 506 (600-1)		1180-2 1/4 786 (800-2 1/4) 1600-3 1206 (1300-3)	

ELEV 394 TDZE 394

REIL Rwy 24 and 31
HIRL Rwy 6-24 and 13-31

NE-4, 10 OCT 2019 to 07 NOV 2019

NE-4, 10 OCT 2019 to 07 NOV 2019