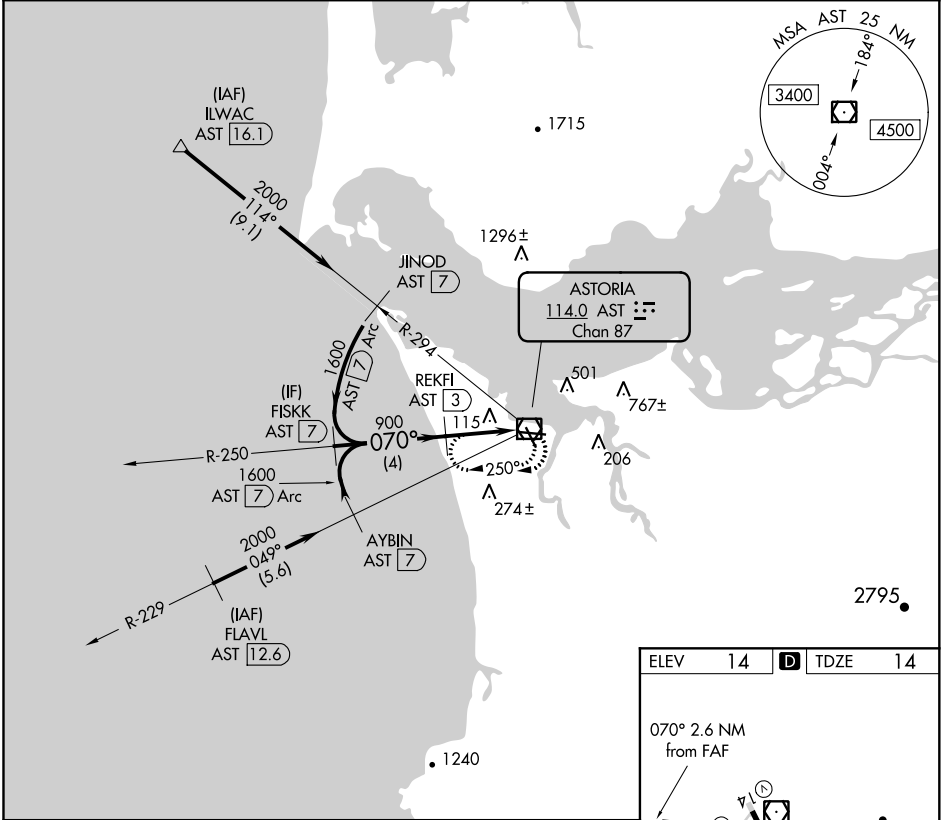


VOR/DME AST 114.0 Chan 87	APP CRS 070°	Rwy Idg TDZE Apt Elev	4894 14 14
---	------------------------	-----------------------------	---------------------------------------

COPTER VOR RWY 8

ASTORIA RGNL (AST)

DME Required.		MISSED APPROACH: Climbing right turn to 2000 in AST VOR/DME holding pattern.	
ASOS 135,375	SEATTLE CENTER 124.2 317.6	MC MINNVILLE RADIO 122.3	UNICOM 122.8 (CTAF) 0



NW-1, 10 OCT 2019 to 07 NOV 2019

NW-1, 10 OCT 2019 to 07 NOV 2019

