

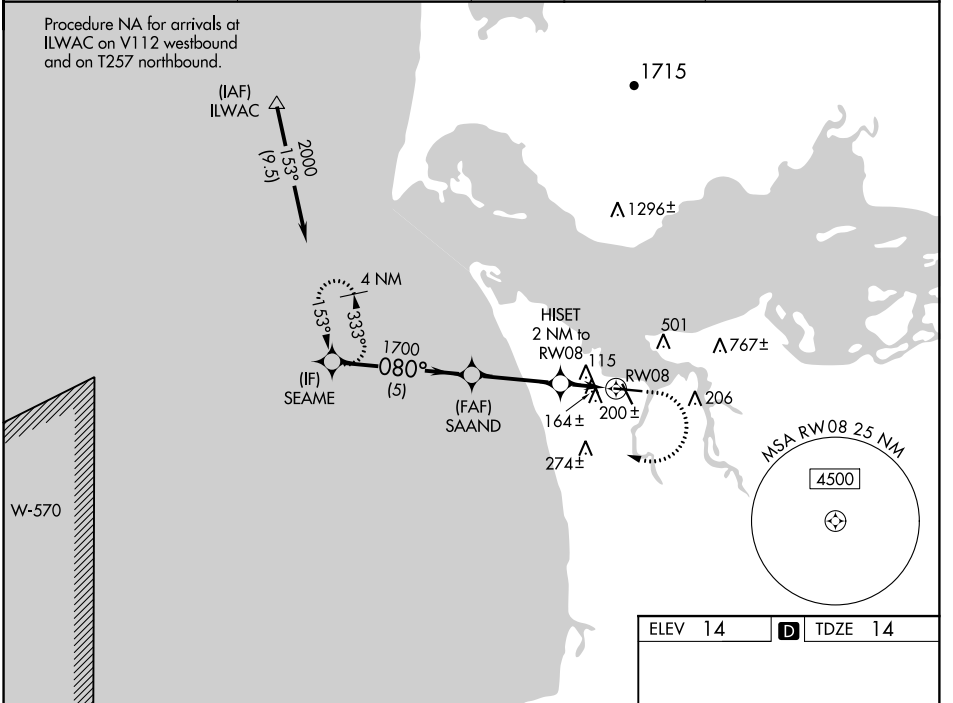
WAAS CH <b>40032</b> <b>W08A</b>	APP CRS <b>080°</b>	Rwy Idg TDZE Apt Elev	<b>4894</b> <b>14</b> <b>14</b>
--	------------------------	-----------------------------	---------------------------------------

# RNAV (GPS) RWY 8

ASTORIA RGNL (AST)

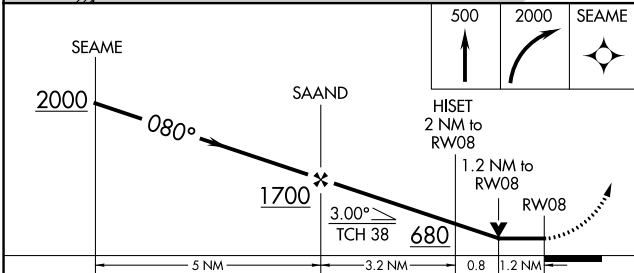
RNP APCH.		MISSED APPROACH: (Do not exceed 225K until SEAME) Climb to 500, then climbing right turn to 2000 direct SEAME and hold.
Rwy 8 helicopter visibility reduction below 3/4 SM NA.		

ASOS <b>135.375</b>	SEATTLE CENTER <b>124.2 317.6</b>	MC MINNVILLE RADIO <b>122.3</b>	UNICOM <b>122.8 (CTAF) 0</b>
------------------------	--------------------------------------	------------------------------------	---------------------------------

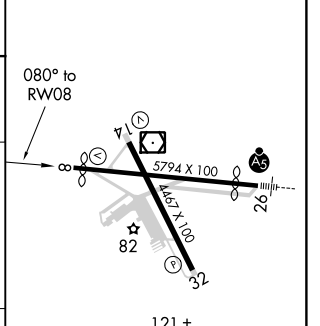


NW-1, 10 OCT 2019 to 07 NOV 2019

NW-1, 10 OCT 2019 to 07 NOV 2019



ELEV 14	TDZE 14
---------	---------



CATEGORY	A	B	C	D
LP MDA	420-1	406 (500-1)	420-1 1/8	406 (500-1 1/8)
LNVA MDA	460-1	446 (500-1)	460-1 3/8	446 (500-1 3/8)
CIRCLING	660-1 646 (700-1)	800-1 786 (800-1)	1080-3 1066 (1100-3)	1160-3 1146 (1200-3)

REIL Rwy 8 0  
 REIL Rwy 14  
 MRL Rlys 8-26 and 14-32 0