

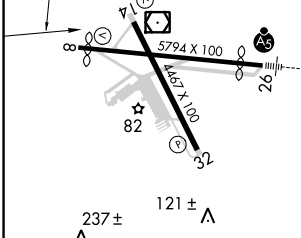
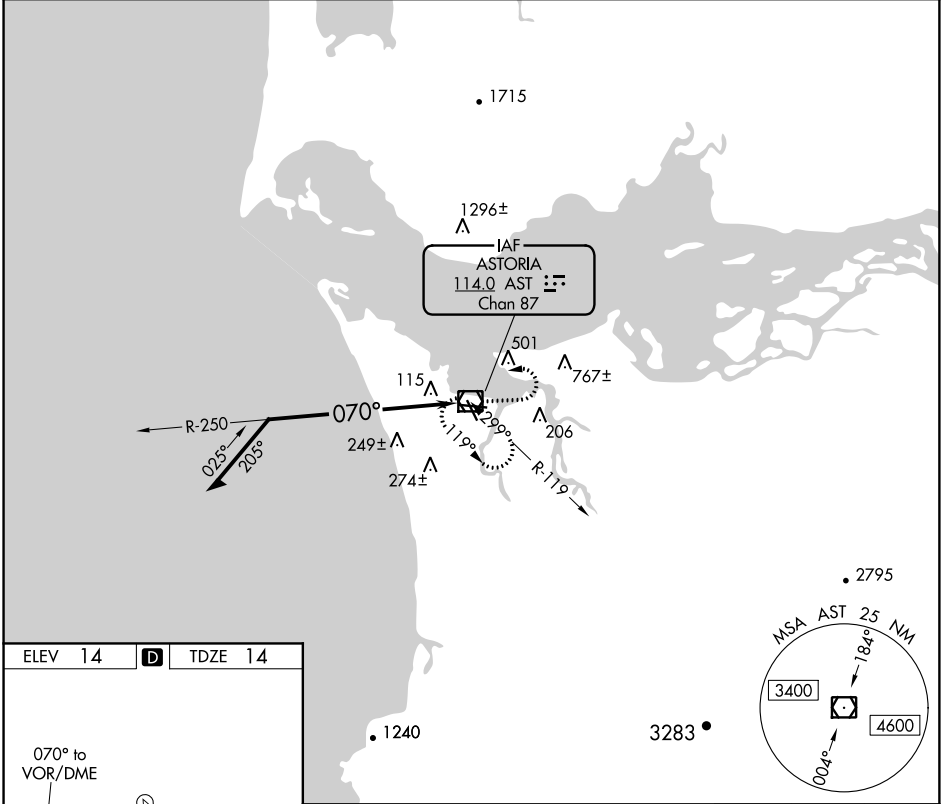
VOR/DME AST 114.0 Chan 87	APP CRS 070°	Rwy Idg TDZE Apt Elev	4894 14 14
---	------------------------	-----------------------------	---------------------------------------

VOR RWY 8

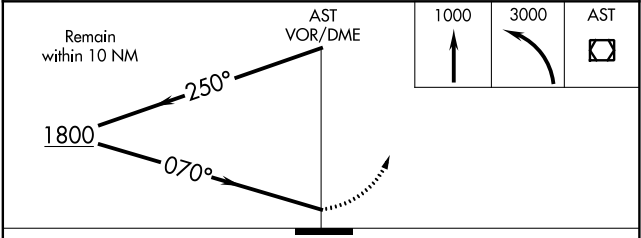
ASTORIA RGNL (AST)

⚠ Rwy 8 helicopter visibility reduction below $\frac{3}{4}$ SM NA.	MISSED APPROACH: Climb to 1000 then climbing left turn to 3000 in AST VOR/DME holding pattern.
---	--

ASOS 135,375	SEATTLE CENTER 124.2 317.6	MC MINNVILLE RADIO 122.3	UNICOM 122.8 (CTAF) 0
------------------------	--------------------------------------	------------------------------------	---------------------------------



ELEV 14	D	TDZE 14
REIL Rwy 8 0		
REIL Rwy 14		
MIRL Rws 8-26 and 14-32 0		



CATEGORY	A	B	C	D
S-8	660-1	646 (700-1)	660-1 $\frac{7}{8}$ 646 (700-1 $\frac{7}{8}$)	660-2 646 (700-2)
CIRCLING	660-1 646 (700-1)	760-1 $\frac{1}{4}$ 746 (800-1 $\frac{1}{4}$)	800-2 $\frac{1}{4}$ 786 (800-2 $\frac{1}{4}$)	900-3 886 (900-3)

NW-1, 10 OCT 2019 to 07 NOV 2019

NW-1, 10 OCT 2019 to 07 NOV 2019