

# MEADOWS FOUR DEPARTURE

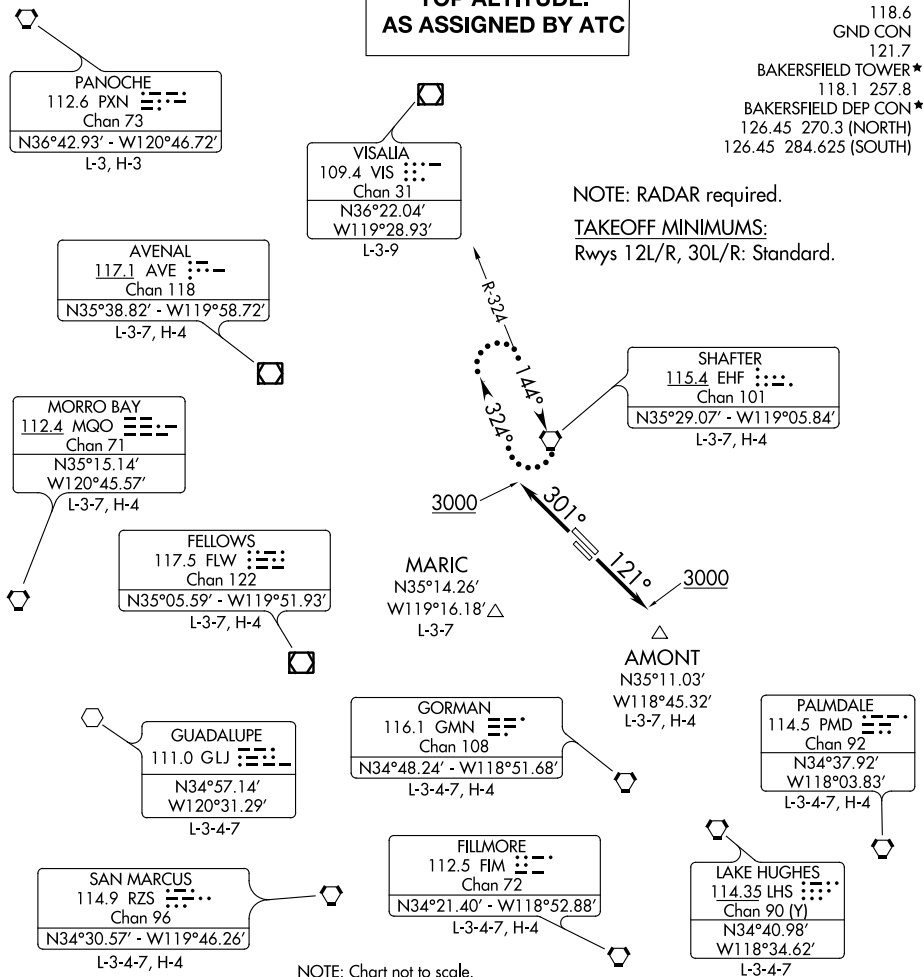
AL-36 (FAA)

MEADOWS FIELD (BFL)  
BAKERSFIELD, CALIFORNIA

**TOP ALTITUDE:  
AS ASSIGNED BY ATC**

ATIS  
118.6  
GND CON  
121.7  
BAKERSFIELD TOWER\*  
118.1 257.8  
BAKERSFIELD DEP CON\*  
126.45 270.3 (NORTH)  
126.45 284.625 (SOUTH)

NOTE: RADAR required.  
TAKEOFF MINIMUMS:  
Rwys 12L/R, 30L/R: Standard.



SW-3, 10 OCT 2019 to 07 NOV 2019

SW-3, 10 OCT 2019 to 07 NOV 2019

NOTE: Chart not to scale.



## DEPARTURE ROUTE DESCRIPTION

**TAKEOFF RUNWAYS 12L/R:** Climb heading 121° to 3000 for vector to assigned route/fix. Thence. . . .

**TAKEOFF RUNWAYS 30L/R:** Climb heading 301° to 3000 for vector to assigned route/fix. Thence. . . .

. . . .Thence, maintain ATC assigned altitude. Expect clearance to requested altitude five minutes after departure.

**LOST COMMUNICATIONS:** If no radio contact for two minutes, proceed direct SHAFTER VORTAC and hold. Climb in holding pattern to expected altitude prior to proceeding on course.

# MEADOWS FOUR DEPARTURE