

RNAV (GPS) RWY 12R

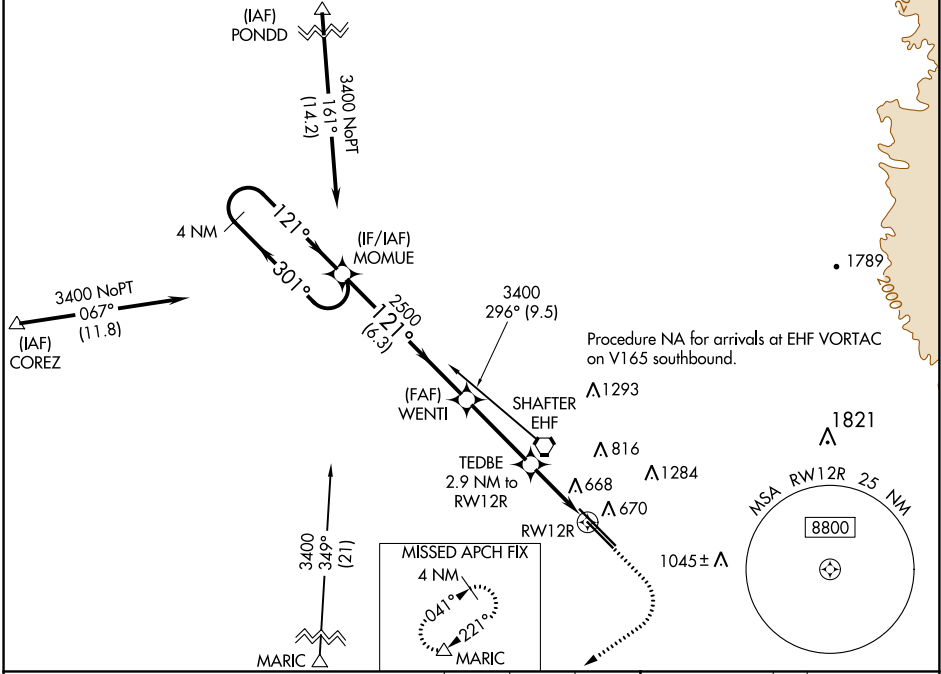
MEADOWS FIELD (BFL)

WAAS CH 61040 W12B	APP CRS 121°	Rwy Idg TDZE 488 Apt Elev 510	7700
--	------------------------	---	-------------

▽ For uncompensated Baro-VNAV systems, LNAV/VNAV NA below -1°C (31°F) or above 54°C (130°F). Circling NA northeast of Rwy 12L-30R.
DME/DME RNP-0.3 NA.

MISSED APPROACH: Climb to 1000 then climbing right turn to 3500 direct MARIC and hold.

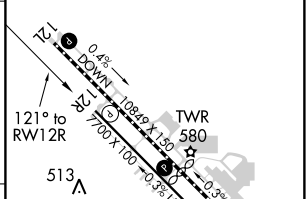
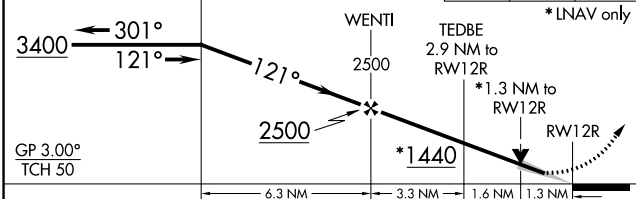
ATIS 118.6	BAKERSFIELD APP CON ★ 118.8 284.625 118.9 270.3 (SOUTH) (NORTH)	BAKERSFIELD TOWER ★ 118.1 (CTAF) 257.8	GND CON 121.7	UNICOM 122.95
----------------------	--	--	-------------------------	-------------------------



SW-3, 10 OCT 2019 to 07 NOV 2019

SW-3, 10 OCT 2019 to 07 NOV 2019

VGSI and RNAV glidepath not coincident (VGSI Angle 3.00/TCH 25).	1000	3500	MARIC	ELEV 510	TDZE 488
4 NM Holding Pattern MOMUE	↑	↷	△		



CATEGORY	A	B	C	D
LPV DA		738- ³ / ₄	250 (300- ³ / ₄)	
LNAV/VNAV DA		969-1 ⁵ / ₈	481 (500-1 ⁵ / ₈)	
LNAV MDA	920-1	432 (500-1)	920-1 ¹ / ₄	432 (500-1 ¹ / ₄)
C CIRCLING	960-1	450 (500-1)	960-1 ¹ / ₂	1060-2 450 (500-1 ¹ / ₂)

TDZ/CL Rwy 30R	
HIRL Rwy 12L-30R	⬇️
MIRL Rwy 12R-30L	⬇️

RNAV (GPS) RWY 12R