

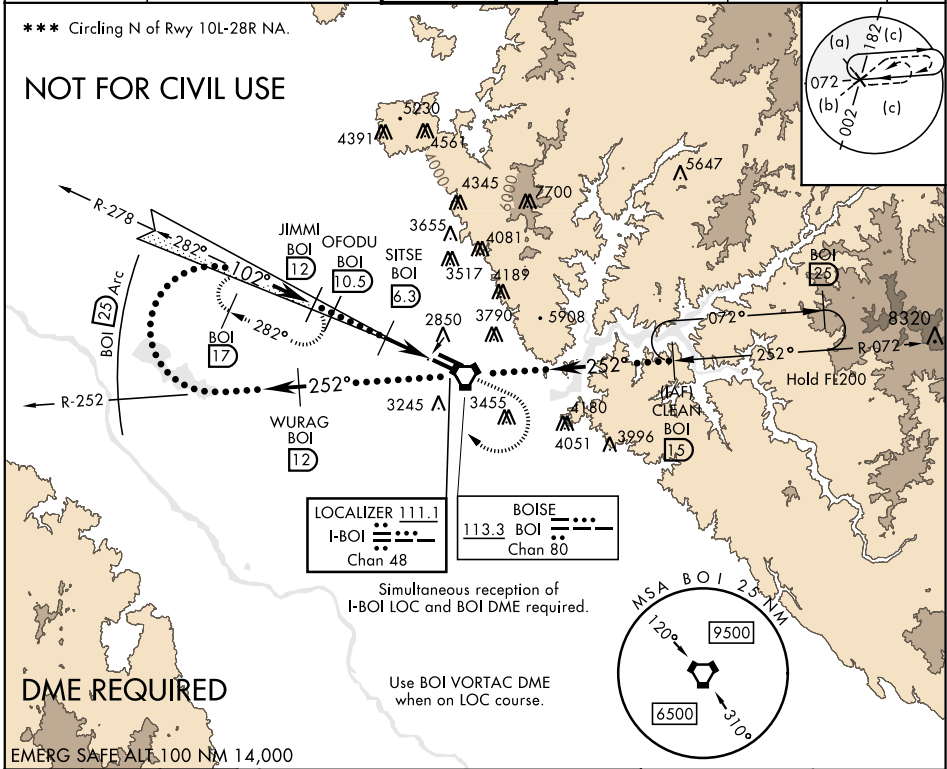
# HI-ILS Z or LOC Z RWY 10R

LOC I-BOI <b>111.1</b>	APCH CRS <b>102°</b>	Rwy Idg TDZE Arpt Elev <b>9763</b> <b>2836</b> <b>2871</b>	JAL-57 [USAF]	BOISE AIR TERMINAL (GOWEN FLD) (KBOI)
---------------------------	-------------------------	---	---------------	---------------------------------------

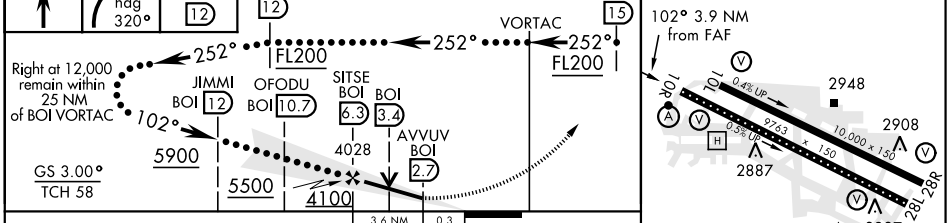
▼ \* When ALS inop, increase RVR to 40 and vis to 3/4 mile.  
 \*\* When ALS inop, increase RVR to 55 and vis to 1 1/4 miles.

MISSED APPROACH: Climb to 3700 then climbing right turn to 5000 on heading 320° and BOI VORTAC R-278 to JIMMI BOI 12 DME and hold.

ATIS <b>123.9 290.4</b>	BIG SKY APP CON <b>119.6 269.4</b>	BOISE TOWER <b>118.1 257.8</b>	GND CON <b>121.7 348.6</b>	CLNC DEL <b>125.9 323.2</b>	ASOS
----------------------------	---------------------------------------	-----------------------------------	-------------------------------	--------------------------------	------



3700	5000	JIMMI BOI 12	WURAG BOI R-252 12	VGSi and ILS glidepath not coincident (VGSi angle 3.00°/55)	CLEAN R-072 BOI 15	ELEV 2871	TDZE 2836
------	------	--------------	--------------------	---	--------------------	-----------	-----------



CATEGORY	C	D	E
S-ILS 10R *	3036/18	200	(200-1/2)
S-LOC 10R **	3180/30	344	(400-3/4)
CIRCLING ***	3740-2 1/2 869 (900-2 1/2)	3820-3	949 (1000-3)

TDZL/CL Rwy 10R-28L  
 HIRL Rwy 10L-28R, 10R-28L  
 REIL Rwy 10L

# HI-ILS Z or LOC Z RWY 10R

NW-1, 10 OCT 2019 to 07 NOV 2019

NW-1, 10 OCT 2019 to 07 NOV 2019

