

BOISE, IDAHO

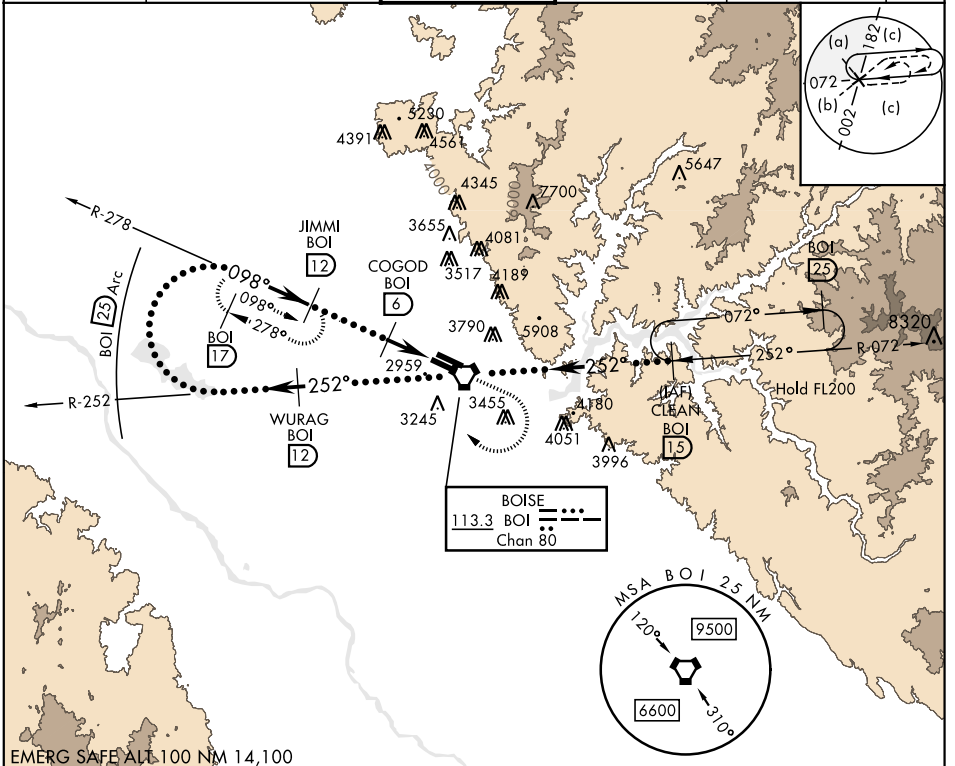
# HI-VOR/DME or TACAN RWY 10R

VORTAC BOI <b>113.3</b> Chan <b>80</b>	APCH CRS <b>098°</b>	Rwy Idg TDZE Arprt Elev <b>9763</b> <b>2836</b> <b>2871</b>	JAL-57 [USAF]	BOISE AIR TERMINAL (GOWEN FLD) (KBOI)
--	-------------------------	--	---------------	---------------------------------------

\* When ALS inop, increase CAT DE RVR to 60 and vis to 1 1/4 miles.  
 \*\* Circling N of Rwy 10L-28R NA.

MISSED APPROACH: Climb to 3700 then climbing right turn to 5000 via heading 320° to intercept BOI VORTAC R-278 then direct JIMMI/12 DME and hold

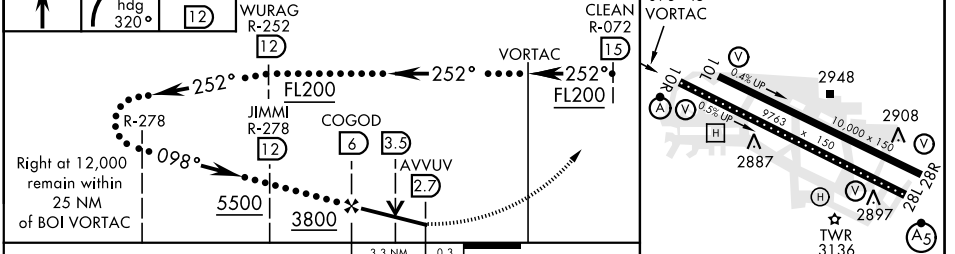
ATIS <b>123.9 290.4</b>	BIG SKY APP CON <b>119.6 269.4</b>	BOISE TOWER <b>118.1 257.8</b>	GND CON <b>121.7 348.6</b>	CLNC DEL <b>125.9 323.2</b>	ASOS
----------------------------	---------------------------------------	-----------------------------------	-------------------------------	--------------------------------	------



NW-1, 10 OCT 2019 to 07 NOV 2019

NW-1, 10 OCT 2019 to 07 NOV 2019

3700	5000	JIMMI BOI R-278 (12)	VGSI and descent angles not coincident	ELEV 2871	TDZE 2836
------	------	----------------------	--	-----------	-----------



CATEGORY	C	D	E
S-10R *	3220/24 384 (400-1/2)	3220/50	384 (400-1)
CIRCLING **	3440-1 1/2 569 (600-1 1/2)	3440-2 569 (600-2)	3860-3 989 (1000-3)

BOISE, IDAHO 43°34'N-116°13'W BOISE AIR TERMINAL (GOWEN FLD) (KBOI)

Amtd 1 07MAR13

# HI-VOR/DME or TACAN RWY 10R