

BOISE, IDAHO

VORTAC BOI 113.3 Chan 80	APCH CRS 278°	Rwy ldg 28L 9763 28R 2858 Arpt Elev 2871	28R 10,000 28R 2871
--	-------------------------	--	--------------------------------------

HI-VOR/DME or TACAN RWY 28L
JAL-57 [USAF]
BOISE AIR TERMINAL (GOWEN FLD) (KBOI)

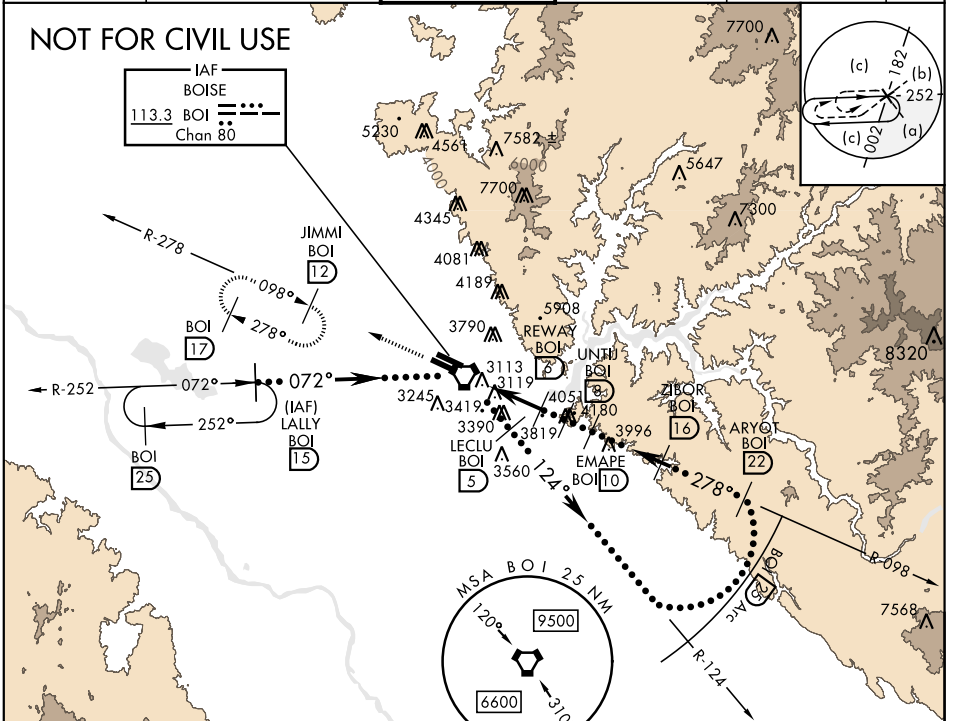
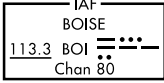
▼ * When ALS inop, increase CAT C vis to 1½ miles, CAT DE vis to 1¼ miles.
** Circling N of Rwy 10L-28R NA.



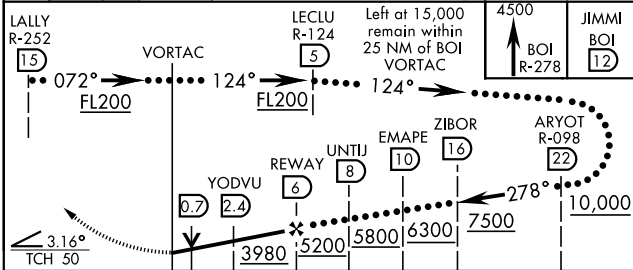
MISSED APPROACH: Climb to 4500 via BOI VORTAC R-278 to JIMMI and hold.

ATIS 123.9 290.4	BIG SKY APP CON 119.6 269.4	BOISE TOWER 118.1 257.8	GND CON 121.7 348.6	CLNC DEL 125.9 323.2	ASOS
----------------------------	---------------------------------------	-----------------------------------	-------------------------------	--------------------------------	------

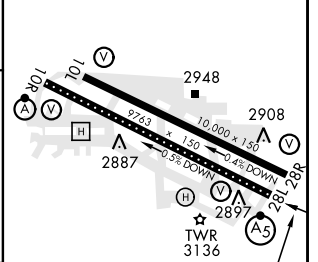
NOT FOR CIVIL USE



EMERG SAFE ALT 100 NM 14,100



ELEV 2871	TDZE 28L 2858
	TDZE 28R 2871



CATEGORY	C	D	E
S-28L *	3380/50 522 (600-1)	3380/60	522 (600-1¼)
SIDESTEP RWY 28R	3380-1¼ 509 (600-1¼)	3380-2¼	509 (600-2¼)
CIRCLING**	3440-1½ 569 (600-1½)	3440-2 569 (600-2)	3820-3 949 (1000-3)

278° from VORTAC
TDZL/CL Rwy 10R-28L
HIRL Rwy 10L-28R, 10R-28L
REIL Rwy 10L

BOISE, IDAHO 43°34'N-116°13'W BOISE AIR TERMINAL (GOWEN FLD) (KBOI)

Amcl 3 07MAR13

HI-VOR/DME or TACAN RWY 28L

NW-1, 10 OCT 2019 to 07 NOV 2019

NW-1, 10 OCT 2019 to 07 NOV 2019