

LOC/DME I-AAD 110.15 Chan 38(Y)	APP CRS 282°	Rwy ldg 10000 TDZE 2871 Apt Elev 2871
--	------------------------	---

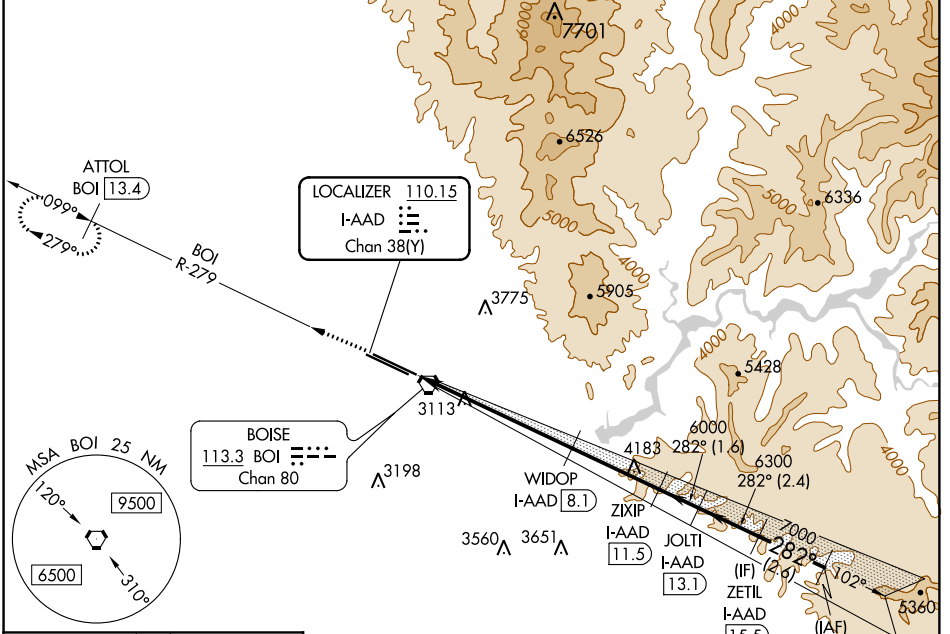
ILS or LOC RWY 28R

BOISE AIR TERMINAL/GOWEN FIELD (BOI)

⚠ Circling NA north of Rwy 10L-28R. DME required.

MISSED APPROACH: Climb to 6000 on BOI VORTAC R-279 to ATTOL/BOI 13.4 DME and hold.

D-ATIS 123.9 290.4	BIG SKY APP CON 119.6 269.4	BOISE TOWER 118.1 257.8	GND CON 121.7 348.6	CLNC DEL 125.9 323.2
------------------------------	---------------------------------------	-----------------------------------	-------------------------------	--------------------------------

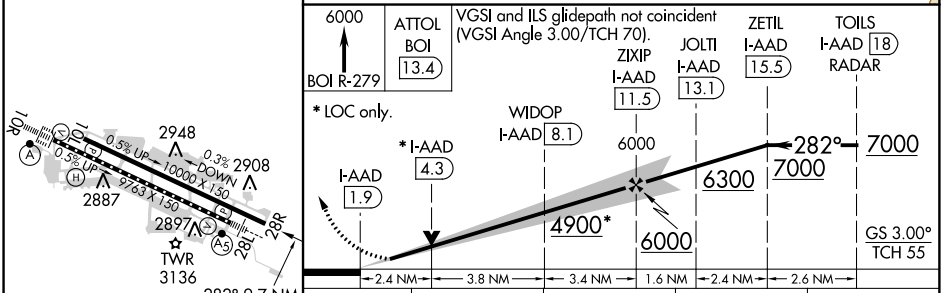


NW-1, 10 OCT 2019 to 07 NOV 2019

NW-1, 10 OCT 2019 to 07 NOV 2019

ELEV 2871	D TDZE 2871
-----------	--------------------

RADAR and DME REQUIRED



CATEGORY	A	B	C	D
S-ILS 28R	3121-¾ 250 (300-¾)			
S-LOC 28R	3700-1 829 (900-1)	3700-1¼ 829 (900-1¼)	3700-2½ 829 (900-2½)	829 (900-2½)
C CIRCLING	3700-1¼ 829 (900-1¼)	3740-2½ 869 (900-2½)	3820-3 949 (1000-3)	

REIL Rwy 10L
TDZ/CL Rwys 10R and 28L
HIRL Rwys 10L-28R and 10R-28L

BOISE, IDAHO
Orig-B 29MAR18

BOISE AIR TERMINAL/GOWEN FIELD (BOI)
43°34'N-116°13'W

ILS or LOC RWY 28R