

LOC/DME I-BOI <b>111.1</b> Chan <b>48</b>	APP CRS <b>102°</b>	Rwy Idg TDZE Apt Elev	<b>9763</b> <b>2836</b> <b>2871</b>
-------------------------------------------------	------------------------	-----------------------------	-------------------------------------------

# ILS Y RWY 10R (CAT II & III)

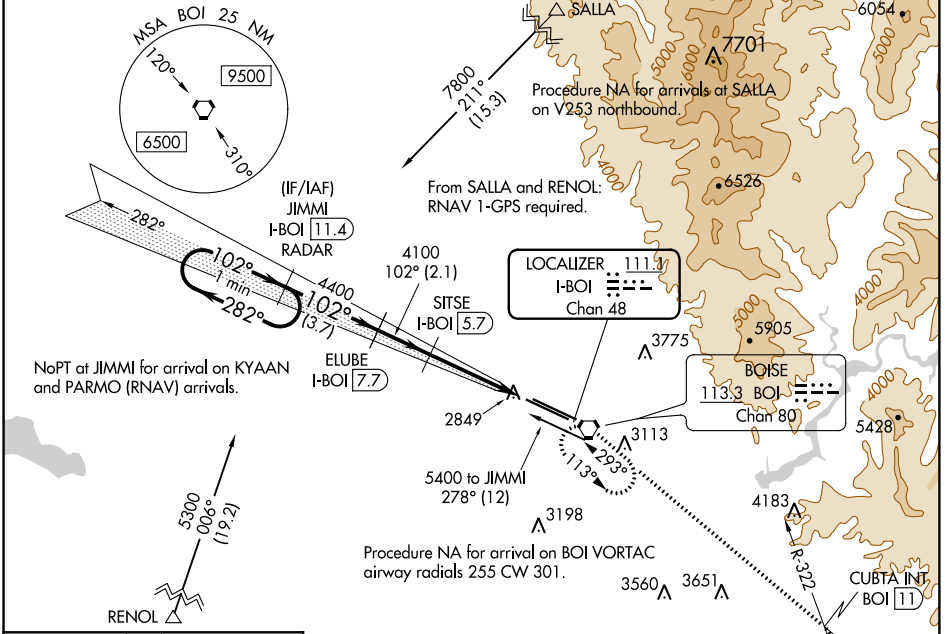
BOISE AIR TERMINAL/GOWEN FIELD (BOI)

**V** DME required.  
**A** CAT II: RVR 1000 authorized with specific OPSPEC, MSPEC, or LOA approval and use of autoland or HUD to touchdown.

ALSIF-2

MISSED APPROACH: Climb to 6000 on BOI VORTAC R-113 to CUBTA INT/BOI VORTAC 11 DME and right turn direct BOI VORTAC and hold.

D-ATIS <b>123.9 290.4</b>	BIG SKY APP CON <b>119.6 269.4</b>	<b>BOISE TOWER</b> <b>118.1 257.8</b>	GND CON <b>121.7 348.6</b>	CLNC DEL <b>125.9 323.2</b>
------------------------------	---------------------------------------	------------------------------------------	-------------------------------	--------------------------------

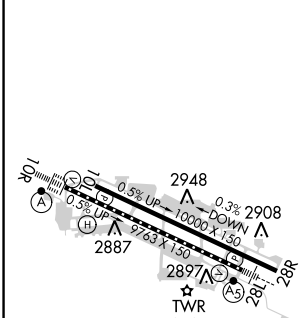


NW-1, 10 OCT 2019 to 07 NOV 2019

NW-1, 10 OCT 2019 to 07 NOV 2019

ELEV 2871	<b>D</b> TDZE 2836
-----------	--------------------

## RADAR or DME REQUIRED



One Minute Holding Pattern	VGSI and descent angles not coincident (VGSI Angle 3.00/TCH 64).	6000	CUBTA INT	BOI
JIMMI I-BOI 11.4 RADAR	ELUBE I-BOI 7.7	SITSE I-BOI 5.7	BOI R-113	Use I-BOI DME when on the localizer course.
5000	4400	4100		
GS 3.00° TCH 58	3.7 NM	2.1 NM	3.8 NM	979'
CATEGORY	A	B	C	D
S-ILS 10R	CAT II RA 102/12 100 DA 2936			
S-ILS 10R	CAT III RVR 03			

## CATEGORY II and III ILS - SPECIAL AIRCREW & AIRCRAFT CERTIFICATION REQUIRED

REIL Rwy 10L  
 TDZ/CL Rwys 10R and 28L  
 HIRL Rwys 10L-28R and 10R-28L