

LOC/DME I-BOI	APP CRS	Rwy Idg	<b>9763</b>
<b>111.1</b>	<b>102°</b>	TDZE	<b>2836</b>
Chan <b>48</b>		Apt Elev	<b>2871</b>

# ILS Y RWY 10R (SA CAT I)

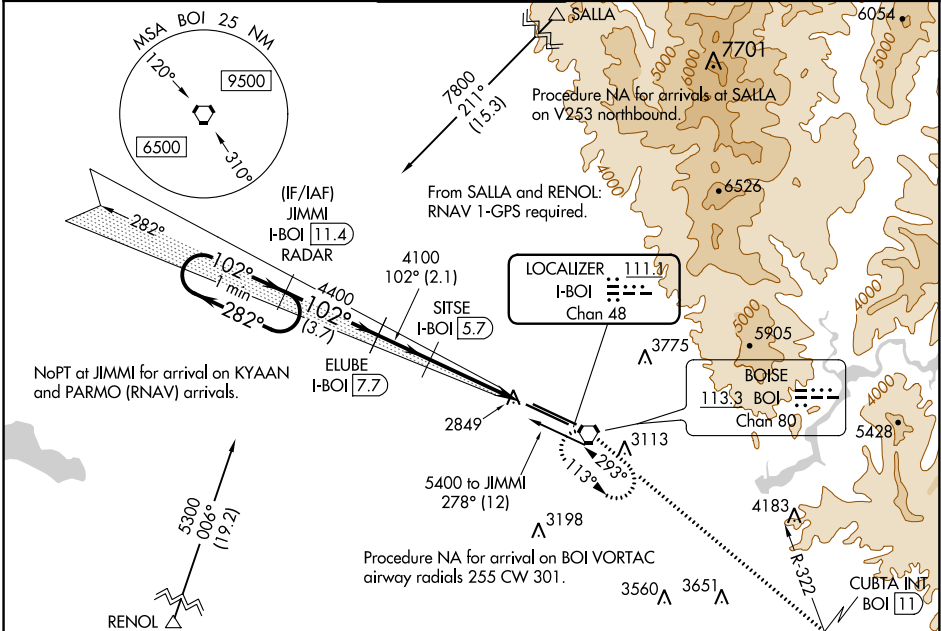
BOISE AIR TERMINAL/GOWEN FIELD (BOI)

**DME required.**  
Requires specific OPSPEC, MSPEC, or LOA approval and use of HUD to DH.

ALSF-2  
Rwy 10R

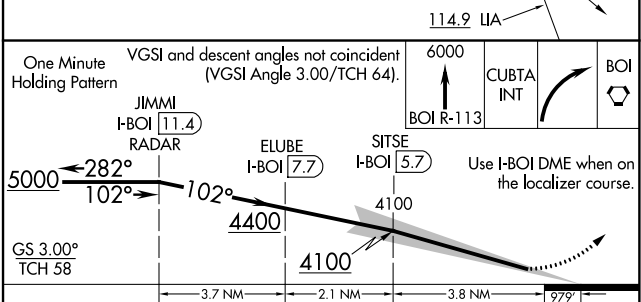
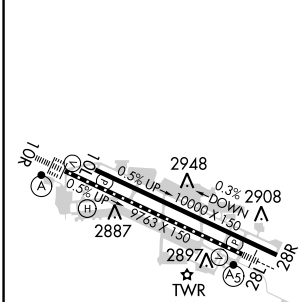
**MISSED APPROACH:** Climb to 6000 on BOI VORTAC R-113 to CUBTA INT/BOI VORTAC 11 DME and right turn direct BOI VORTAC and hold.

D-ATIS <b>123.9 290.4</b>	BIG SKY APP CON <b>119.6 269.4</b>	<b>BOISE TOWER</b> <b>118.1 257.8</b>	GND CON <b>121.7 348.6</b>	CLNC DEL <b>125.9 323.2</b>
------------------------------	---------------------------------------	--	-------------------------------	--------------------------------



ELEV 2871	<b>D</b> TDZE 2836
-----------	--------------------

## RADAR or DME REQUIRED



CATEGORY	A	B	C	D
S-ILS 10R	RA 170/14 150 DA 2986			

## SA CATEGORY I ILS - SPECIAL AIRCREW & AIRCRAFT CERTIFICATION REQUIRED

NW-1, 10 OCT 2019 to 07 NOV 2019

NW-1, 10 OCT 2019 to 07 NOV 2019