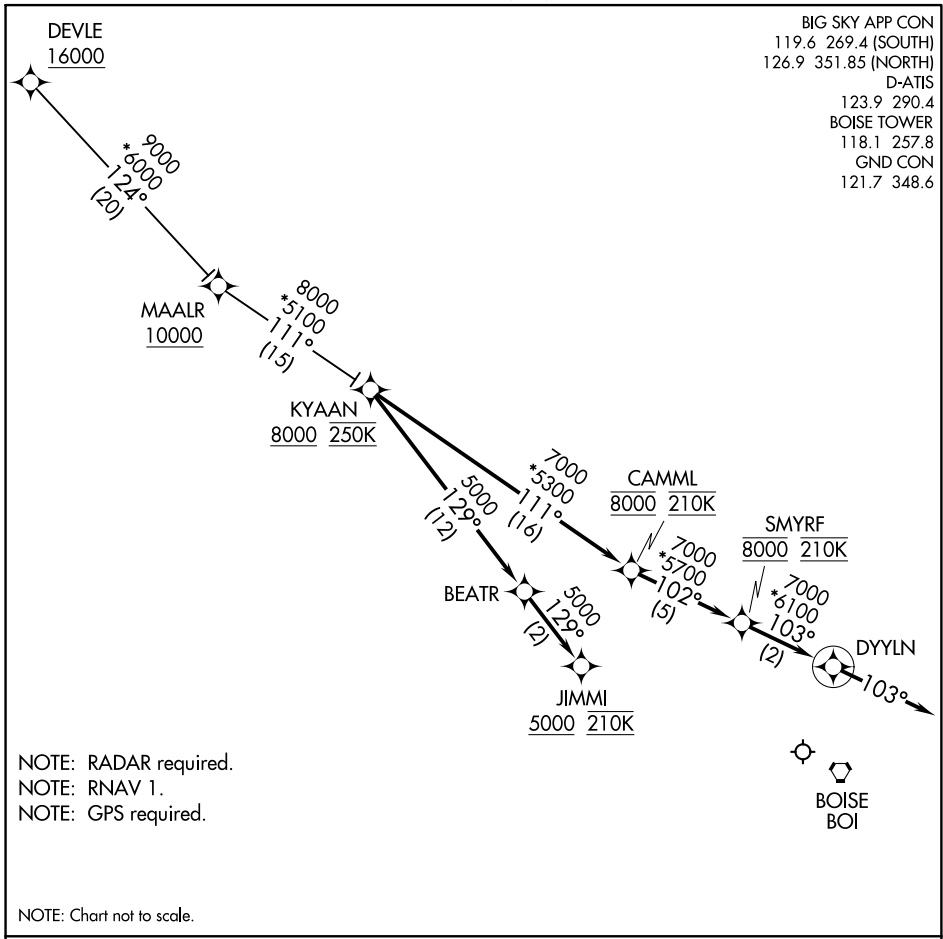


(KYAAN.KYAAN3) 17341

KYAAN THREE ARRIVAL (RNAV)

BOISE AIR TERMINAL/GOWEN FIELD (BOI)
AL-57 (FAA) BOISE, IDAHO



NW-1, 10 OCT 2019 to 07 NOV 2019

NW-1, 10 OCT 2019 to 07 NOV 2019

ARRIVAL ROUTE DESCRIPTION

DEVLE TRANSITION (DEVLE.KYAAN3)

LANDING RUNWAYS 10L/R: From KYAAN on track 129° to BEATR, then on track 129° to cross JIMMI at or above 5000 and at 210K. Expect assigned approach or RADAR vectors to final approach course.

LANDING RUNWAYS 28L/R: From KYAAN on track 111° to cross CAMML at 8000 and at 210K, then on track 102° to cross SMYRF at 8000 and at 210K, then on track 103° to DYLLN, then on track 103°. Expect assigned approach or RADAR vectors to final approach course.

KYAAN THREE ARRIVAL (RNAV)
(KYAAN.KYAAN3) 07DEC17

BOISE, IDAHO
BOISE AIR TERMINAL/GOWEN FIELD (BOI)