

APP CRS	Rwy Idg	<b>10000</b>
<b>282°</b>	TDZE	<b>2871</b>
	Apt Elev	<b>2871</b>

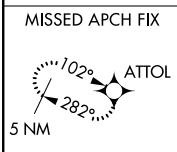
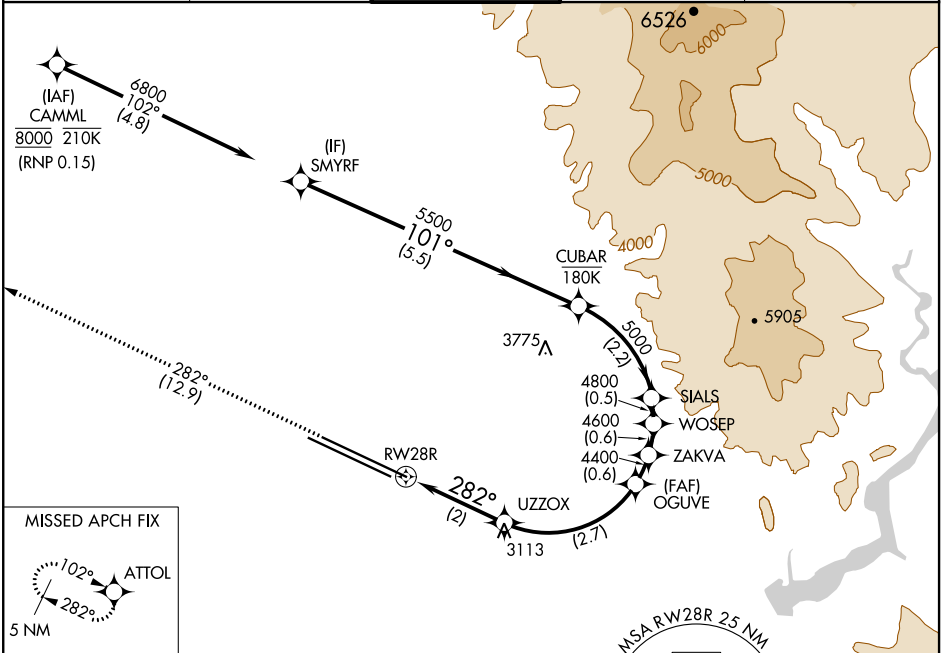
# RNAV (RNP) X RWY 28R

BOISE AIR TERMINAL/GOWEN FIELD (BOI)

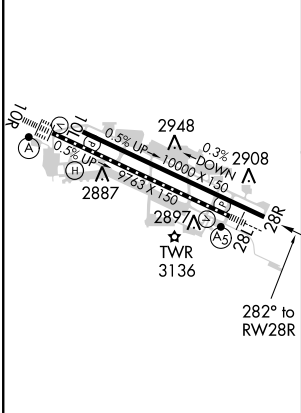
**NA** For uncompensated Baro-VNAV systems, procedure NA below -1.4°C (7°F) or above 52°C (126°F). RF required. GPS required.

MISSED APPROACH: Climb to 6000 on track 282° to ATTOL and hold.

D-ATIS	BIG SKY APP CON	BOISE TOWER	GND CON	CLNC DEL
<b>123.9 290.4</b>	<b>119.6 269.4</b>	<b>118.1 257.8</b>	<b>121.7 348.6</b>	<b>125.9 323.2</b>



ELEV	<b>2871</b>	<b>D</b>	TDZE	<b>2871</b>
------	-------------	----------	------	-------------



6000	ATTOL	VGSI and RNAV glidepath not coincident (VGSI Angle 3.00/TCH 70).	
tr 282°		OGUVE	ZAKVA
		WOSEP	SIALS
		CUBAR	SMYRF
		4400	4800
		4600	5000
		5500	6800
		GP 3.00°	TCH 55

2 NM	2.7 NM	0.6 NM	0.6 NM	0.5 NM	2.2 NM	5.5 NM
CATEGORY	A	B	C	D		
RNP 0.15 DA	3288-1 $\frac{3}{8}$		417 (500-1 $\frac{3}{8}$ )			

REIL Rwy 10L  
 TDZ/CL Rwys 10R and 28L  
 HIRL Rwys 10L-28R and 10R-28L

**AUTHORIZATION REQUIRED**

NW-1, 10 OCT 2019 to 07 NOV 2019

NW-1, 10 OCT 2019 to 07 NOV 2019