

APP CRS	Rwy Idg	<b>10000</b>
<b>102°</b>	TDZE	<b>2844</b>
	Apt Elev	<b>2872</b>

# RNAV (RNP) Z RWY 10L

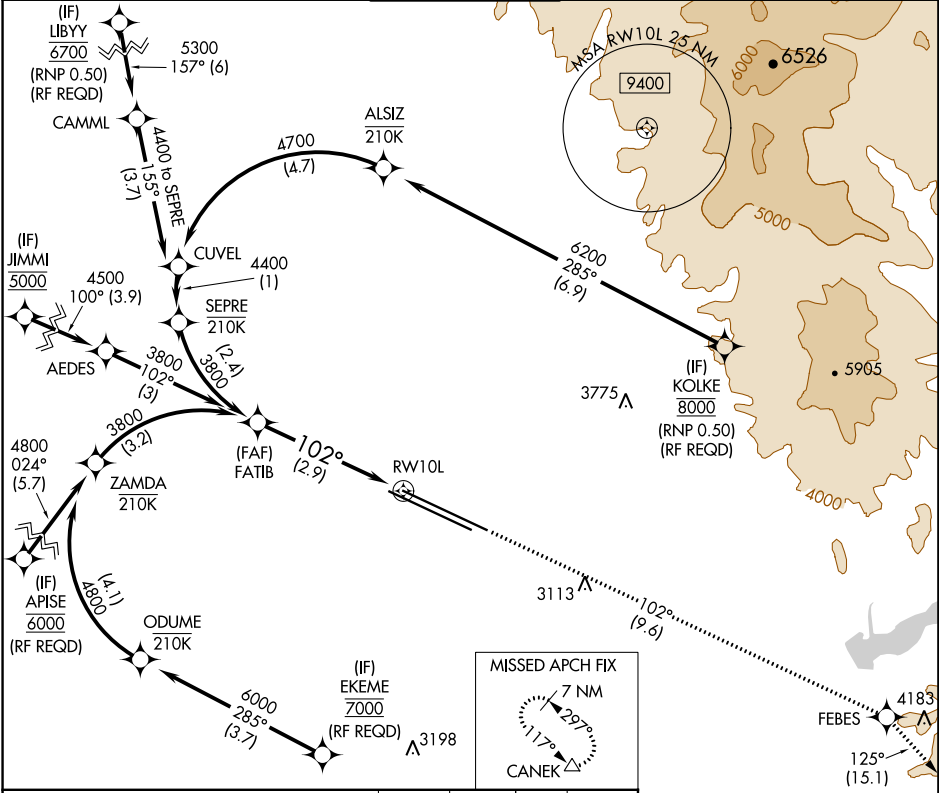
BOISE AIR TERMINAL/GOWEN FIELD (BOI)

RNP AR APCH

MISSED APPROACH: Climb to 7300 on track 102° to FEBES and on track 125° to CANEK and hold.

For uncompensated Baro-VNAV systems, procedure NA below -1.4°C or above 54°C.

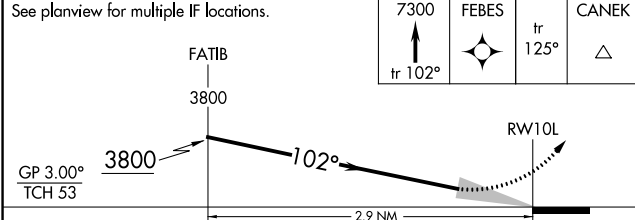
D-ATIS	BIG SKY APP CON	BOISE TOWER	GND CON	CLNC DEL
<b>123.9 290.4</b>	<b>119.6 269.4</b>	<b>118.1 257.8</b>	<b>121.7 348.6</b>	<b>125.9 323.2</b>



NW-1, 10 OCT 2019 to 07 NOV 2019

NW-1, 10 OCT 2019 to 07 NOV 2019

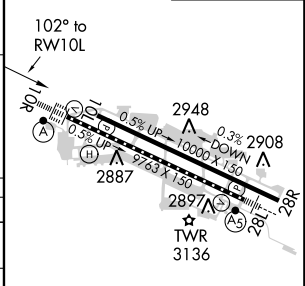
See planview for multiple IF locations.



CATEGORY	A	B	C	D
RNP 0.15 DA		3167-1½	323 (300-1½)	
RNP 0.30 DA		3219-1¼	375 (400-1¼)	

### AUTHORIZATION REQUIRED

ELEV 2872	<b>D</b>	TDZE 2844
-----------	----------	-----------



REIL Rwy 10L  
 TDZ/CL Rwys 10R and 28L  
 HIRL Rwys 10L-28R and 10R-28L