

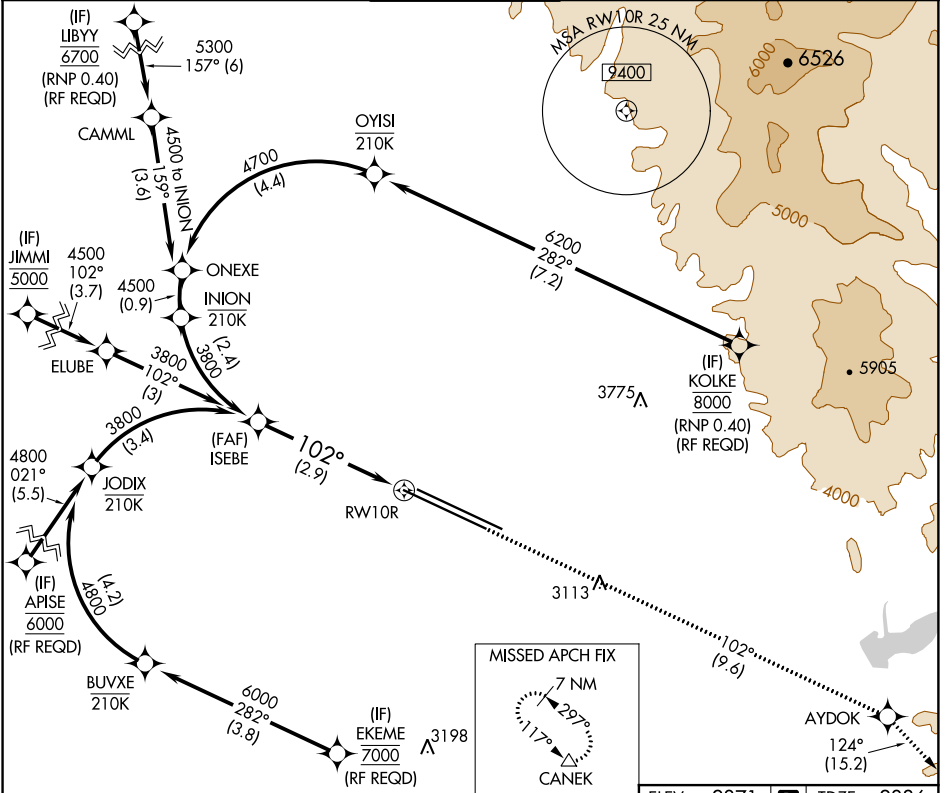
# RNAV (RNP) Z RWY 10R

BOISE AIR TERMINAL/GOWEN FIELD (BOI)

APP CRS	Rwy Idg	<b>9763</b>
<b>102°</b>	TDZE	<b>2836</b>
	Apt Elev	<b>2871</b>

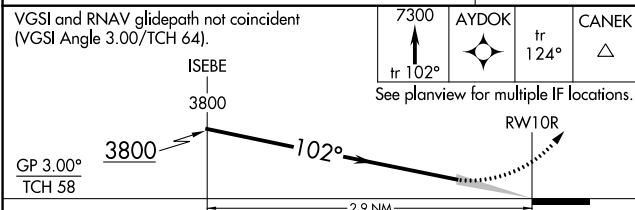
**ALSF-2** MISSED APPROACH: Climb to 7300 on track 102° to AYDOK and on track 124° to CANEK and hold.

D-ATIS <b>123.9 290.4</b>	BIG SKY APP CON <b>119.6 269.4</b>	BOISE TOWER <b>118.1 257.8</b>	GND CON <b>121.7 348.6</b>	CLNC DEL <b>125.9 323.2</b>
------------------------------	---------------------------------------	-----------------------------------	-------------------------------	--------------------------------



NW-1, 10 OCT 2019 to 07 NOV 2019

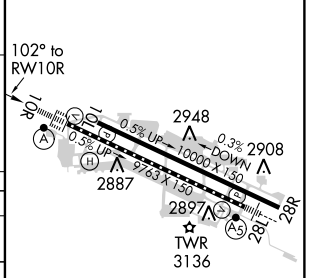
NW-1, 10 OCT 2019 to 07 NOV 2019



ELEV	2871	TDZE	2836
------	------	------	------

CATEGORY	A	B	C	D
RNP 0.15 DA		3163/30	327 (300-3%)	
RNP 0.30 DA		3199/40	363 (400-3%)	

## AUTHORIZATION REQUIRED



REIL Rwy 10L  
TDZ/CL Rwy 10R and 28L  
HIRL Rwy 10L-28R and 10R-28L