

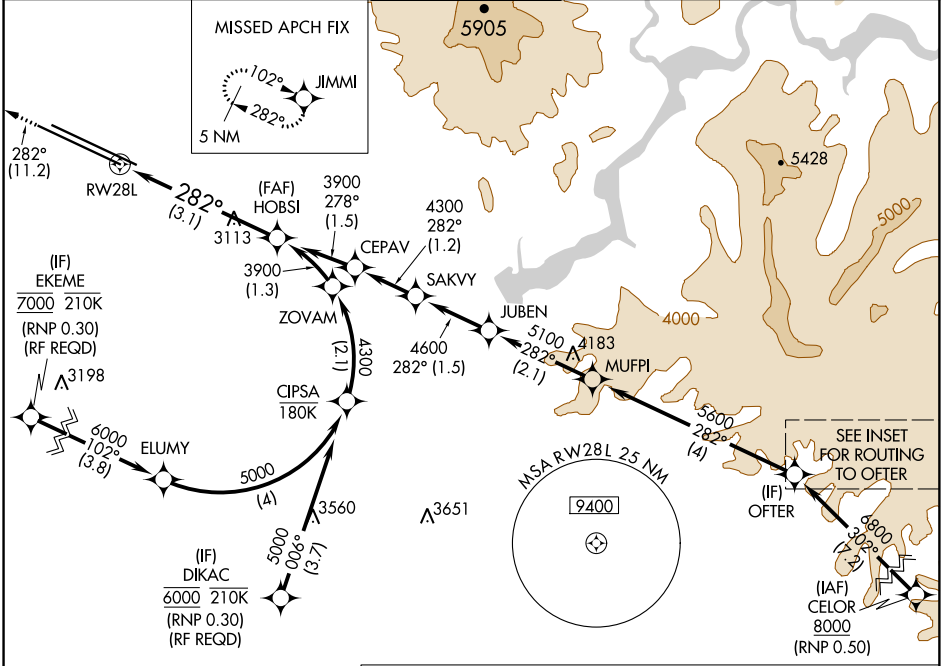
RNAV (RNP) Z RWY 28L

BOISE AIR TERMINAL/GOWEN FIELD (BOI)

APP CRS	Rwy Idg	9763
282°	TDZE	2858
	Apt Elev	2871

<p>For uncompensated Baro-VNAV systems, procedure NA below -1.4°C (7°F) or above 53°C (128°F). GPS required.</p>	<p>MALSR</p>	<p>MISSED APPROACH: Climb to 6000 on track 282° to JIMMI and hold, continue climb-in-hold to 6000.</p>

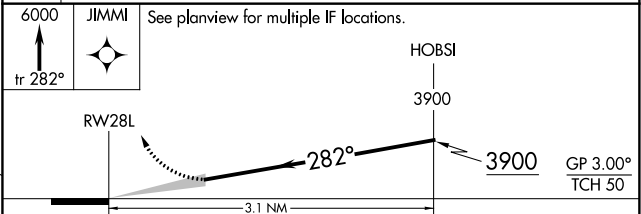
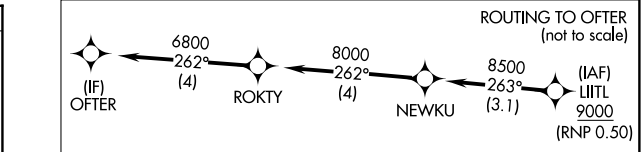
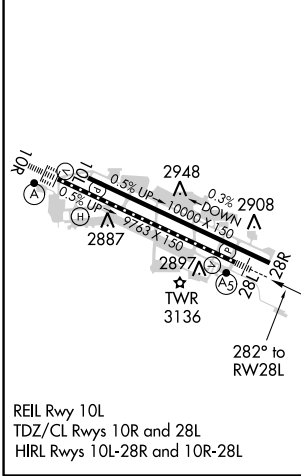
D-ATIS 123.9 290.4	BIG SKY APP CON 119.6 269.4	BOISE TOWER 118.1 257.8	GND CON 121.7 348.6	CLNC DEL 125.9 323.2
------------------------------	---------------------------------------	-----------------------------------	-------------------------------	--------------------------------



NW-1, 10 OCT 2019 to 07 NOV 2019

NW-1, 10 OCT 2019 to 07 NOV 2019

ELEV 2871	D	TDZE 2858
-----------	----------	-----------



CATEGORY	A	B	C	D
RNP 0.15 DA		3276/47	418 (500-1)	
RNP 0.30 DA		3346/60	488 (500-1½)	

AUTHORIZATION REQUIRED