

# RNAV (RNP) Z RWY 28R

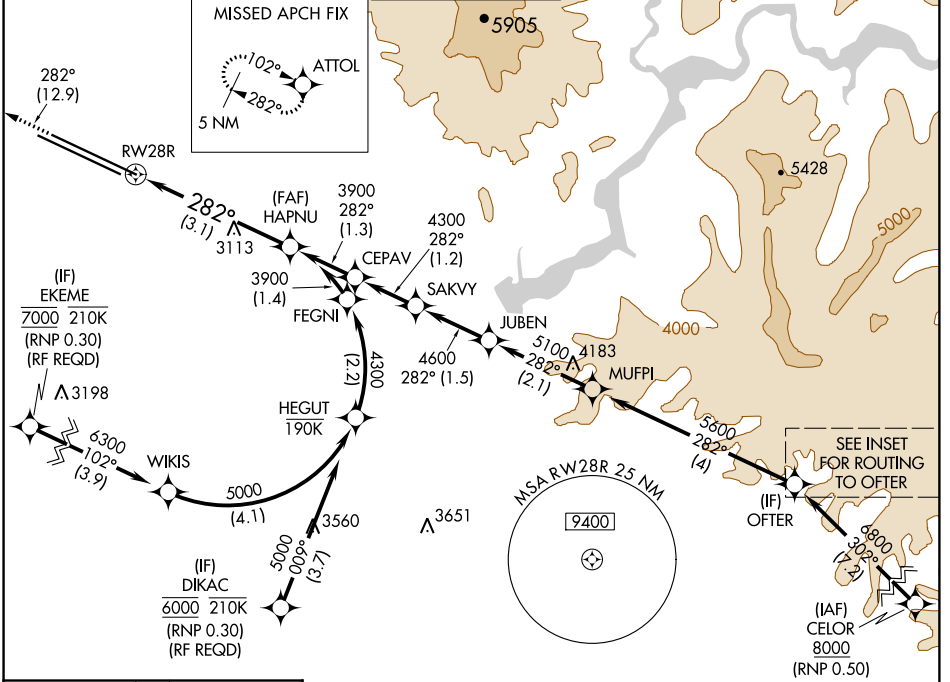
BOISE AIR TERMINAL/GOWEN FIELD (BOI)

APP CRS	Rwy Idg	<b>10000</b>
<b>282°</b>	TDZE	<b>2871</b>
	Apt Elev	<b>2871</b>

**⚠** For uncompensated Baro-VNAV systems, procedure NA below -1.4°C (7°F) or above 52°C (126°F). GPS required.

MISSED APPROACH: Climb to 6000 on track 282° to ATTOL and hold.

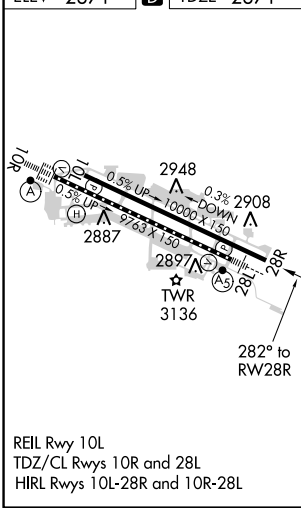
D-ATIS <b>123.9 290.4</b>	BIG SKY APP CON <b>119.6 269.4</b>	BOISE TOWER <b>118.1 257.8</b>	GND CON <b>121.7 348.6</b>	CLNC DEL <b>125.9 323.2</b>
------------------------------	---------------------------------------	-----------------------------------	-------------------------------	--------------------------------



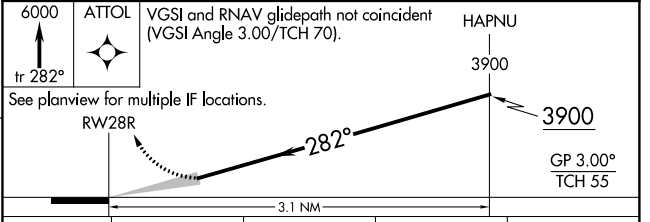
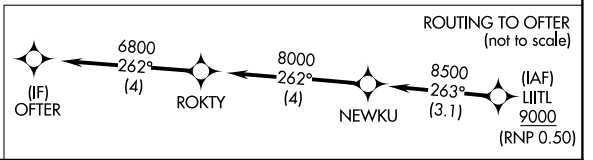
NW-1, 10 OCT 2019 to 07 NOV 2019

NW-1, 10 OCT 2019 to 07 NOV 2019

ELEV	<b>2871</b>	<b>D</b>	TDZE	<b>2871</b>
------	-------------	----------	------	-------------



REIL Rwy 10L  
TDZ/CL Rwys 10R and 28L  
HIRL Rwys 10L-28R and 10R-28L



CATEGORY	A	B	C	D
RNP 0.15 DA		3288-1 $\frac{3}{8}$	417 (500-1 $\frac{3}{8}$ )	
RNP 0.30 DA		3344-1 $\frac{3}{8}$	473 (500-1 $\frac{3}{8}$ )	

## AUTHORIZATION REQUIRED