

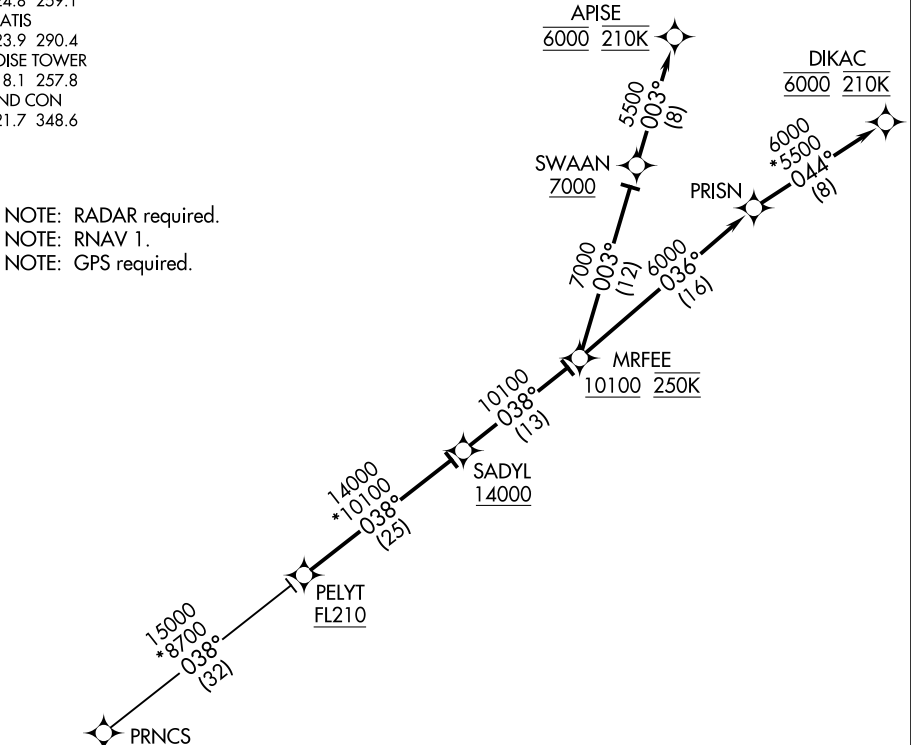
(PELYT.SADYL3) 17341

# SADYL THREE ARRIVAL (RNAV)

BOISE AIR TERMINAL/GOWEN FIELD (BOI)  
BOISE, IDAHO

BIG SKY APP CON  
119.6 269.4 (SOUTH)  
126.9 351.85 (NORTH)  
MOUNTAIN HOME APP CON\*  
124.8 259.1  
D-ATIS  
123.9 290.4  
BOISE TOWER  
118.1 257.8  
GND CON  
121.7 348.6

NOTE: RADAR required.  
NOTE: RNAV 1.  
NOTE: GPS required.



NOTE: Chart not to scale.

## ARRIVAL ROUTE DESCRIPTION

NEERO TRANSITION (NEERO.SADYL3)

PRNCS TRANSITION (PRNCS.SADYL3)

From PELYT on track 038° to cross SADYL at or above 14000, then on track 038° to cross MRFEE at or above 10100 and at 250K.

LANDING RUNWAYS 10L/R: From MRFEE on track 003° to cross SWAAN at or above 7000, then on track 003° to cross APISE at 6000 and at 210K. Expect RNP approach or RADAR vectors to final approach course.

LANDING RUNWAYS 28L/R: From MRFEE on track 036° to PRISN, then on track 044° to cross DIKAC at 6000 and at 210K. Expect RNP approach or RADAR vectors to final approach course.

SADYL THREE ARRIVAL (RNAV)

(PELYT.SADYL3) 07DEC17

BOISE, IDAHO  
BOISE AIR TERMINAL/GOWEN FIELD (BOI)

NW-1, 10 OCT 2019 to 07 NOV 2019

NW-1, 10 OCT 2019 to 07 NOV 2019