

VORTAC BOI 113.3 Chan 80	APP CRS 101°	Rwy Idg TDZE Apt Elev	10000 2844 2871
--	------------------------	-----------------------------	--

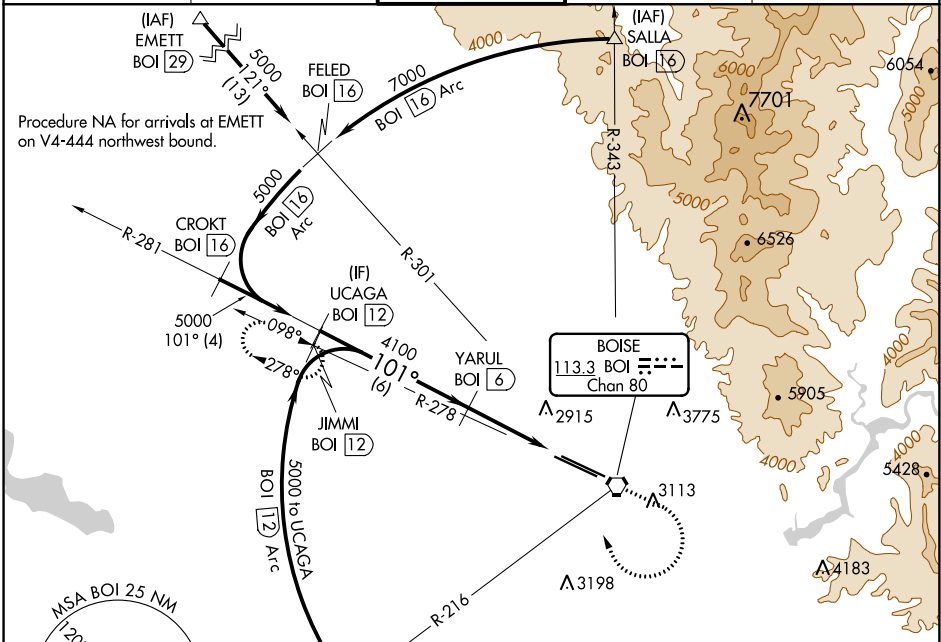
VOR/DME or TACAN RWY 10L

BOISE AIR TERMINAL/GOWEN FIELD (BOI)

⚠ Circling NA north of Rwy 10L-28R.
Helicopter visibility reduction below $\frac{3}{4}$ SM NA.

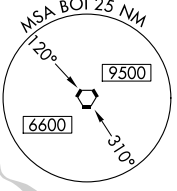
MISSED APPROACH: Climb to 3700 then climbing right turn to 5000 on heading 320° and BOI VORTAC R-278 to JIMMI/BOI 12 DME and hold.

D-ATIS 123.9 290.4	BIG SKY APP CON 119.6 269.4	BOISE TOWER 118.1 257.8	GND CON 121.7 348.6	CLNC DEL 125.9 323.2
------------------------------	---------------------------------------	-----------------------------------	-------------------------------	--------------------------------

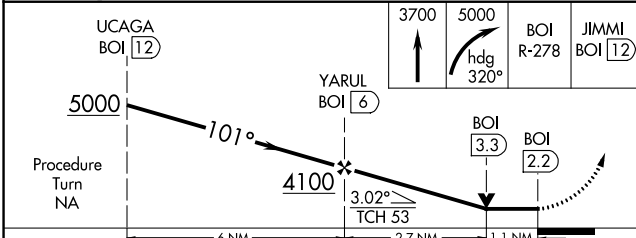
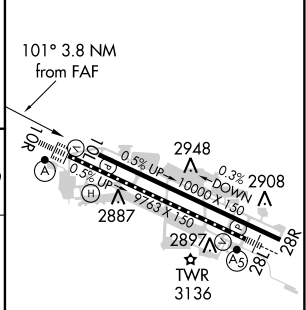


NW-1, 10 OCT 2019 to 07 NOV 2019

NW-1, 10 OCT 2019 to 07 NOV 2019



ELEV 2871	D TDZE 2844
-----------	--------------------



CATEGORY	A	B	C	D	E
S-10L	3240-1	396 (400-1)	3240-1 $\frac{1}{8}$ 396 (400-1 $\frac{1}{8}$)		
CIRCLING	3440-1	569 (600-1)	3440-1 $\frac{1}{2}$ 569 (600-1 $\frac{1}{2}$)	3440-2 569 (600-2)	3860-3 989 (1000-3)

REIL Rwy 10L
TDZ/CL Rws 10R and 28L
HIRL Rws 10L-28R and 10R-28L