

VORTAC BOI 113.3 Chan 80	APP CRS 278°	Rwy Idg	28L	28R
		TDZE	9763	10000
		Apt Elev	2853	2871
			2871	2871

VOR/DME or TACAN RWY 28L

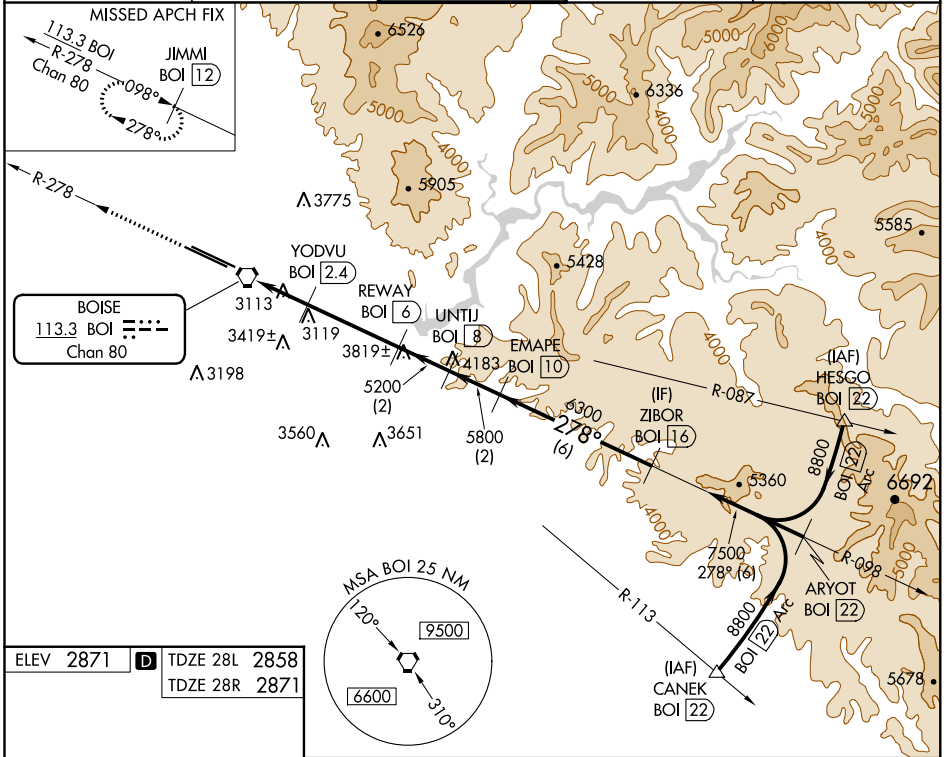
BOISE AIR TERMINAL/GOWEN FIELD (BOI)

▲ Circling NA north of Rwy 10L-28R. For inoperative MALSR increase S-28L Cat E visibility ½ mile.

MALSR Rwy 28L

MISSED APPROACH: Climb to 4500 via BOI VORTAC R-278 to JIMMI/12 DME and hold.

D-ATIS 123.9 290.4	BIG SKY APP CON 119.6 269.4	BOISE TOWER 118.1 257.8	GND CON 121.7 348.6	CLNC DEL 125.9 323.2
------------------------------	---------------------------------------	-----------------------------------	-------------------------------	--------------------------------



ELEV 2871 **D** TDZE 28L 2858
TDZE 28R 2871

CATEGORY	A	B	C	D	E
S-28L	3380/24	522 (600-½)	3380/50 522 (600-1)	3380/60	522 (600-1¼)
SIDESTEP RWY 28R	3380/60	509 (600-1¼)	3380-1¾ 509 (600-1¾)	3380-2¼	509 (600-2¼)
CIRCLING	3440-1	569 (600-1)	3440-1½ 569 (600-1½)	3440-2	3820-3 949 (1000-3)

REIL Rwy 10L
TDZ/CL Rwys 10R and 28L
HIRL Rwys 10L-28R and 10R-28L

NW-1, 10 OCT 2019 to 07 NOV 2019

NW-1, 10 OCT 2019 to 07 NOV 2019