


| | | | |
|---------------------------|------------------------|-----------------------------|--|
| LOC I-SYD 111.3 | APP CRS 032° | Rwy ldg TDZE Apt Elev | 10165 5328 5344 |
|---------------------------|------------------------|-----------------------------|--|

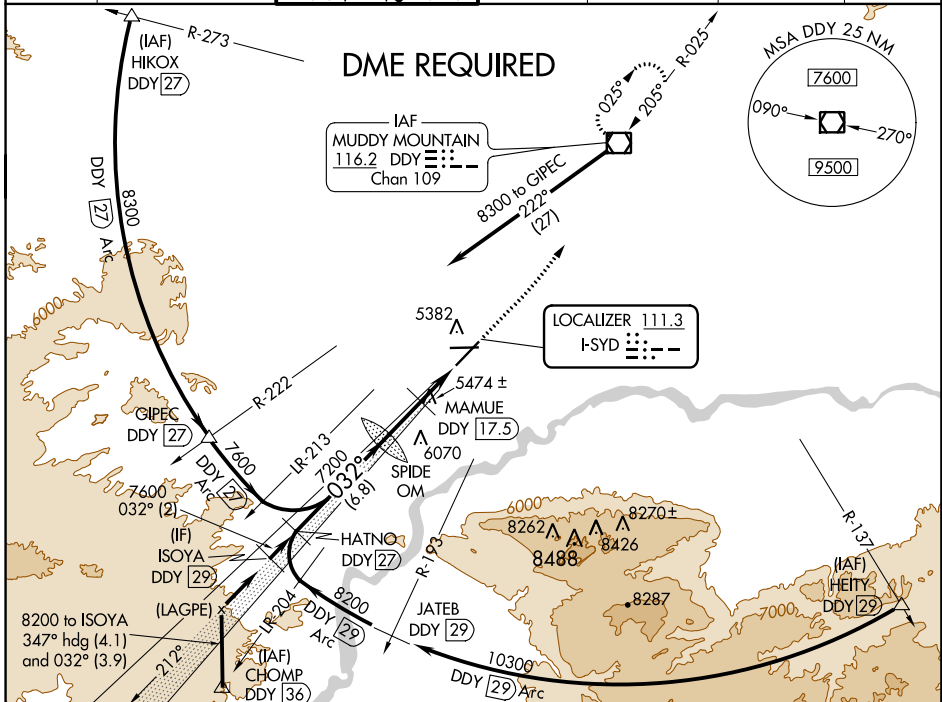
ILS or LOC RWY 3

CASPER/NATRONA COUNTY INTL (CPR)

⚠ DME from DDD VOR/DME. Simultaneous reception of I-SYD and DDD DME required. When local altimeter setting not received, use Douglas altimeter setting; increase DA to 5697 feet and all MDAs 180 feet, increase S-ILS visibility all Cats ¼ mile and S-LOC visibility Cats B, C, and D ½ mile, increase Circling visibility Cats B, C, and D ½ mile. For inoperative MALSRS when using Douglas altimeter setting increase S-ILS visibility all Cats to 1 ¼ mile. **MAMUE FIX MINIMUMS:** For inoperative MALSRS, increase S-LOC visibility Cats C, and D to 1 ½ mile. #RVR 1800 authorized with use of FD or AP or HUD to DA.

MALSRS

MISSED APPROACH:
 Climb to 7500 then left turn direct DDD VOR/DME and hold.

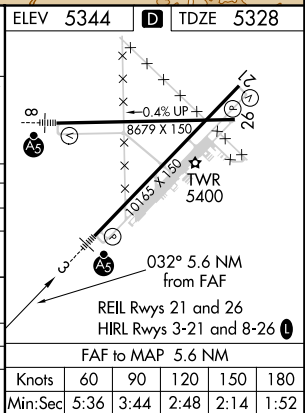
| | | | | | | |
|-----------------------|---|---|-------------------------|--------------------------------|------------------------------------|-------------------------|
| ATIS 126.15 | CASPER APP CON * 120.65 354.1 | CASPER TOWER * 118.3 (CTAF) 0 257.8 | GND CON 121.9 | CLNC DEL 121.9 257.8 | CASPER RADIO 122.4 255.4 | UNICOM 122.95 |
|-----------------------|---|---|-------------------------|--------------------------------|------------------------------------|-------------------------|



NW-1, 10 OCT 2019 to 07 NOV 2019

NW-1, 10 OCT 2019 to 07 NOV 2019

| | | | | | | | | |
|--------------------|---|-----------------|--------------|-------------------|------------|-----------|-----------|-----------|
| ISOYA DDDY [29] | *6400 when using Douglas altimeter setting. | HATNO DDDY [27] | SPIDE OM | MAMUE DDDY [17.5] | 7500 | DDY | ELEV 5344 | TDZE 5328 |
| 8200 | 032° | 7600 | 7200 | *6220 | DDY [14.7] | *LOC only | | |
| GS 3.00° TCH 50 | 2 NM | 6.8 NM | 2.9 NM | 2.7 NM | | | | |
| CATEGORY | A | B | C | D | | | | |
| S-ILS 3 | # 5528/24 200 (200-½) | | | | | | | |
| S-LOC 3 | 6220/40 | 892 (900-¾) | 6220-2 | 892 (900-2) | | | | |
| CIRCLING | 6220-1¼ | 876 (900-1½) | 6220-2½ | 876 (900-2¾) | | | | |
| MAMUE FIX MINIMUMS | | | | | | | | |
| S-LOC 3 | 5740/24 | 412 (400-½) | 5740/40 | 412 (400-¾) | | | | |
| CIRCLING | 5740-1 | 5800-1 | 5800-1½ | 5900-2 | | | | |
| | 396 (400-1) | 456 (500-1) | 456 (500-1½) | 556 (600-2) | | | | |



| | | | | | |
|---------|------|------|------|------|------|
| Knots | 60 | 90 | 120 | 150 | 180 |
| Min:Sec | 5:36 | 3:44 | 2:48 | 2:14 | 1:52 |