

WAAS CH 63012 W21A	APP CRS 212°	Rwy Idg TDZE Apt Elev	10165 5330 5350
--	------------------------	-----------------------------	--

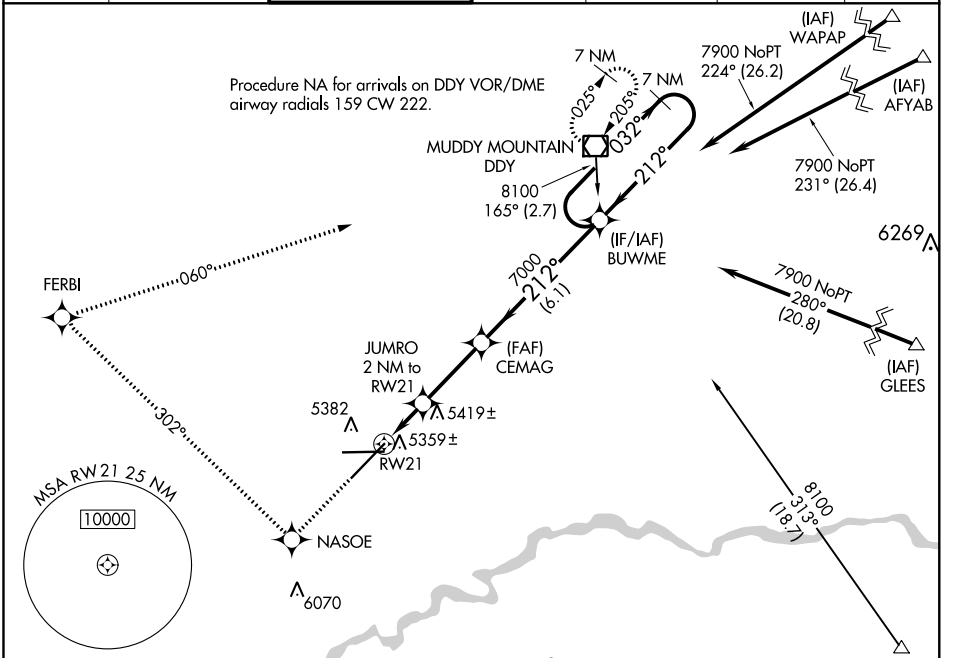
RNAV (GPS) RWY 21

CASPER/NATRONA COUNTY INTL (CPR)

▼ For uncompensated Baro-VNAV systems, LNAV/VNAV NA below -25°C (-13°F) or above 38°C (100°F). DME/DME RNP-0.3 NA.

MISSED APPROACH: Climb to 8100 direct NASOE and right turn via track 302° to FERBI and via track 060° to DDY VOR/DME and hold.

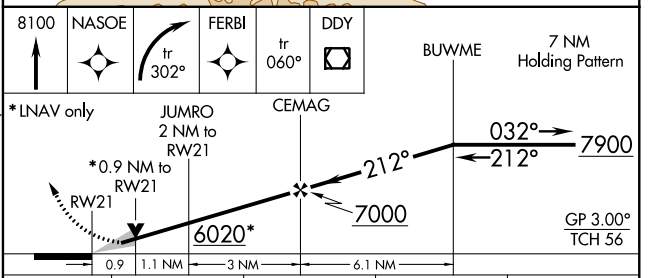
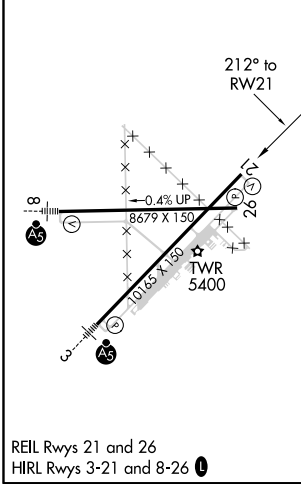
ATIS 126.15	CASPER APP CON * 120.65 354.1	CASPER TOWER * 118.3 (CTAF) 0257.8	GND CON 121.9	CLNC DEL 121.9 257.8	CASPER RADIO 122.4 255.4	UNICOM 122.95
-----------------------	---	--	-------------------------	--------------------------------	------------------------------------	-------------------------



NW-1, 10 OCT 2019 to 07 NOV 2019

NW-1, 10 OCT 2019 to 07 NOV 2019

ELEV 5350	D	TDZE 5330
-----------	----------	-----------



CATEGORY	A	B	C	D
LPV DA		5580-¾	250 (300-¾)	
LNAV/VNAV DA		5629-1	299 (300-1)	
LNAV MDA	5680-1	350 (400-1)		5680-1¼ 350 (400-1¼)
CIRCLING	5780-1 430 (500-1)	5800-1 450 (500-1)	5800-1½ 450 (500-1½)	5900-2 550 (600-2)