

WAAS CH 78112 W26A	APP CRS 257°	Rwy Idg TDZE 5335 Apt Elev 5350	8679 5335 5350
--	------------------------	---	---

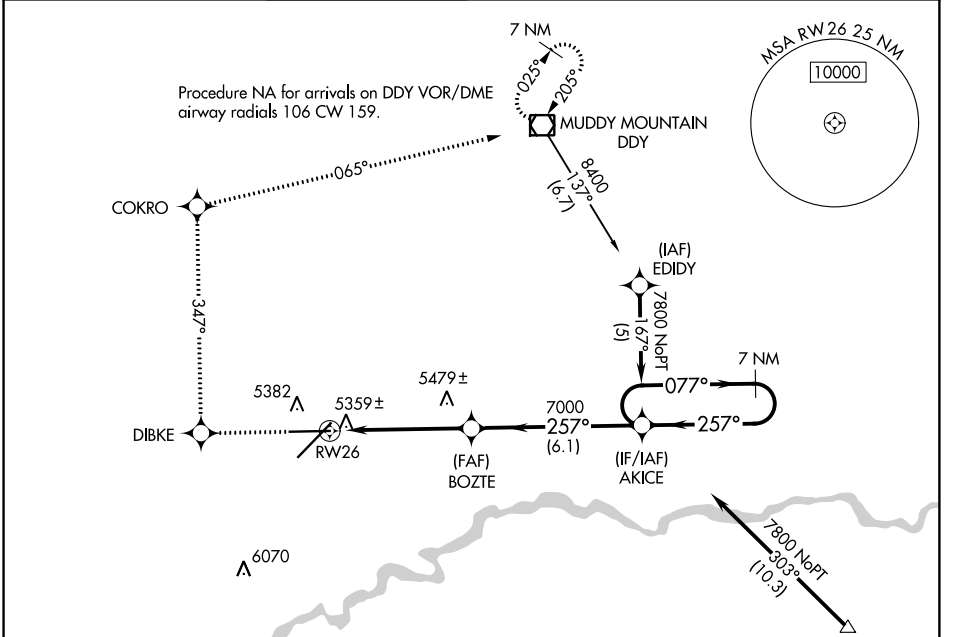
RNAV (GPS) RWY 26

CASPER/NATRONA COUNTY INTL (CPR)

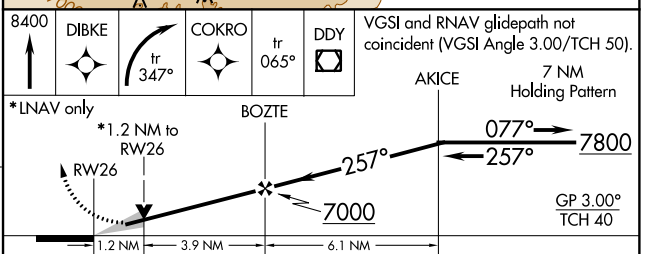
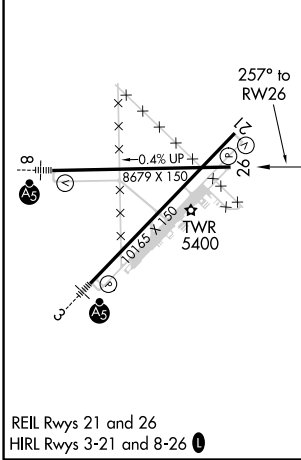
▼ For uncompensated Baro-VNAV systems, LNAV/VNAV NA below -25°C (-13°F) or above 38°C (100°F). DME/DME RNP-0.3 NA.

MISSED APPROACH: Climb to 8400 direct DIBKE and right turn via track 347° to COKRO and via track 065° to DDY VOR/DME and hold.

ATIS 126.15	CASPER APP CON * 120.65 354.1	CASPER TOWER * 118.3 (CTAF) 0 257.8	GND CON 121.9	CLNC DEL 121.9 257.8	CASPER RADIO 122.4 255.4	UNICOM 122.95
-----------------------	---	---	-------------------------	--------------------------------	------------------------------------	-------------------------



ELEV 5350	D	TDZE 5335
-----------	----------	-----------



CATEGORY	A	B	C	D
LPV DA		5585-1	250 (300-1)	
LNAV/VNAV DA		5629-1	294 (300-1)	
LNAV MDA	5740-1	405 (400-1)	5740-1¼	405 (400-1¼)
CIRCLING	5780-1 430 (500-1)	5800-1 450 (500-1)	5800-1½ 450 (500-1½)	5900-2 550 (600-2)

NW-1, 10 OCT 2019 to 07 NOV 2019

NW-1, 10 OCT 2019 to 07 NOV 2019