

WAAS CH 73006 W03A	APP CRS 032°	Rwy Idg 10165 TDZE 5328 Apt Elev 5350
---------------------------------	------------------------	--

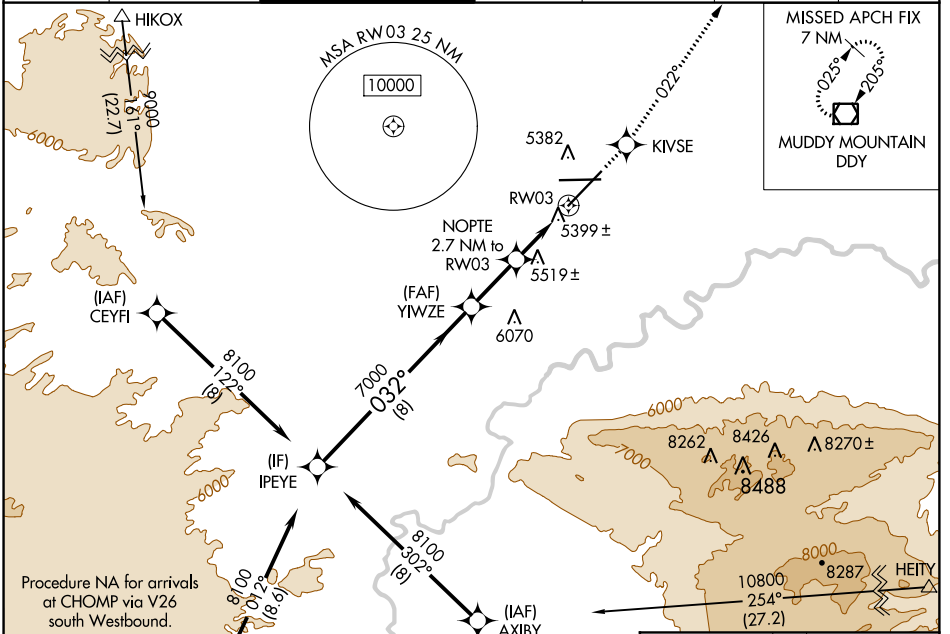
RNAV (GPS) RWY 3

CASPER/NATRONA COUNTY INTL (CPR)

▼ For inoperative MALSR, increase LPV all Cats visibility to 1 mile.
For uncompensated Baro-VNAV systems, LNAV/VNAV NA below -25°C (-13°F) or above 38°C (100°F).
DME/DME RNP-0.3 NA.

MALSR MISSED APPROACH: Climb to 7500 direct KIVSE and via track 022° to DDY VOR/DME and hold.

ATIS 126.15	CASPER APP CON* 120.65 354.1	CASPER TOWER* 118.3 (CTAF) 0 257.8	GND CON 121.9	CLNC DEL 121.9 257.8	CASPER RADIO 122.4 255.4	UNICOM 122.95
-----------------------	--	--	-------------------------	--------------------------------	------------------------------------	-------------------------



NW-1, 10 OCT 2019 to 07 NOV 2019

NW-1, 10 OCT 2019 to 07 NOV 2019

Procedure Turn NA	8100	032°	7000	*6240	*1.3 NM to RW03	NOPT 2.7 NM to RW03	YIWZE	KIVSE	7500	tr 022°	DDY	*LNAV only			
												8 NM	2.3 NM	1.4 NM	1.3 NM
CATEGORY	A	B	C	D											
LPV DA	5643/24		315 (300-½)												
LNAV/VNAV DA	5691/40		363 (400-¾)												
LNAV MDA	5780/24	452 (500-½)	5780/40	5780/50											
			452 (500-¾)	452 (500-1)											
CIRCLING	5780-1	5800-1	5800-1½	5900-2											
	430 (500-1)	450 (500-1)	450 (500-1½)	550 (600-2)											

