

WAAS CH <b>86306</b> <b>W08A</b>	APP CRS <b>077°</b>	Rwy Idg TDZE <b>5344</b> Apt Elev <b>5350</b>
--	------------------------	---

# RNAV (GPS) RWY 8

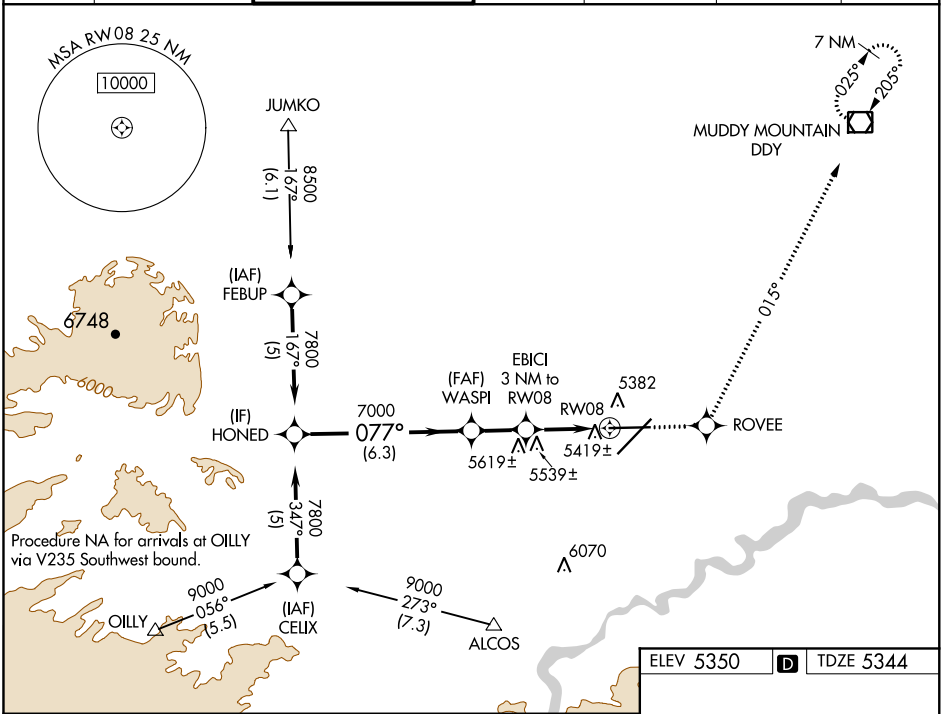
CASPER/NATRONA COUNTY INTL (CPR)

▼ For uncompensated Baro-VNAV systems, LNAV/VNAV NA below -25°C (-13°F) or above 38°C (100°F).  
DME/DME RNP-0.3 NA.



MISSED APPROACH: Climb to 7700 direct ROVEE and via track 015° to DDY VOR/DME and hold.

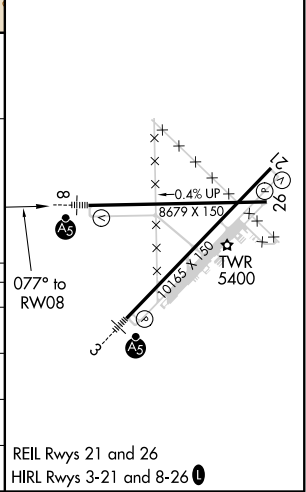
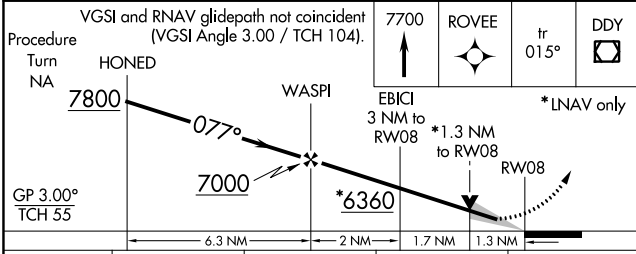
ATIS <b>126.15</b>	CASPER APP CON* <b>120.65 354.1</b>	CASPER TOWER* <b>118.3 (CTAF) 0257.8</b>	GND CON <b>121.9</b>	CLNC DEL <b>121.9 257.8</b>	CASPER RADIO <b>122.4 255.4</b>	UNICOM <b>122.95</b>
-----------------------	--	---	-------------------------	--------------------------------	------------------------------------	-------------------------



NW-1, 10 OCT 2019 to 07 NOV 2019

NW-1, 10 OCT 2019 to 07 NOV 2019

ELEV 5350	<b>D</b>	TDZE 5344
-----------	----------	-----------



CATEGORY	A	B	C	D
LPV DA		5594/24	250 (300-½)	
LNAV/VNAV DA		5689/40	345 (400-¾)	
LNAV MDA	5800/24	456 (500-½)	5800/40 456 (500-¾)	5800/50 456 (500-1)
CIRCLING	5800-1	450 (500-1)	5800-1½ 450 (500-1½)	5900-2 550 (600-2)

REIL Rwy 21 and 26  
HIRL Rwy 3-21 and 8-26