

VOR/DME DDY 116.2 Chan 109	APP CRS 203°	Rwy Idg 10165 TDZE 5330 Apt Elev 5344
------------------------------------------------	------------------------	------------------------------------------------------------------

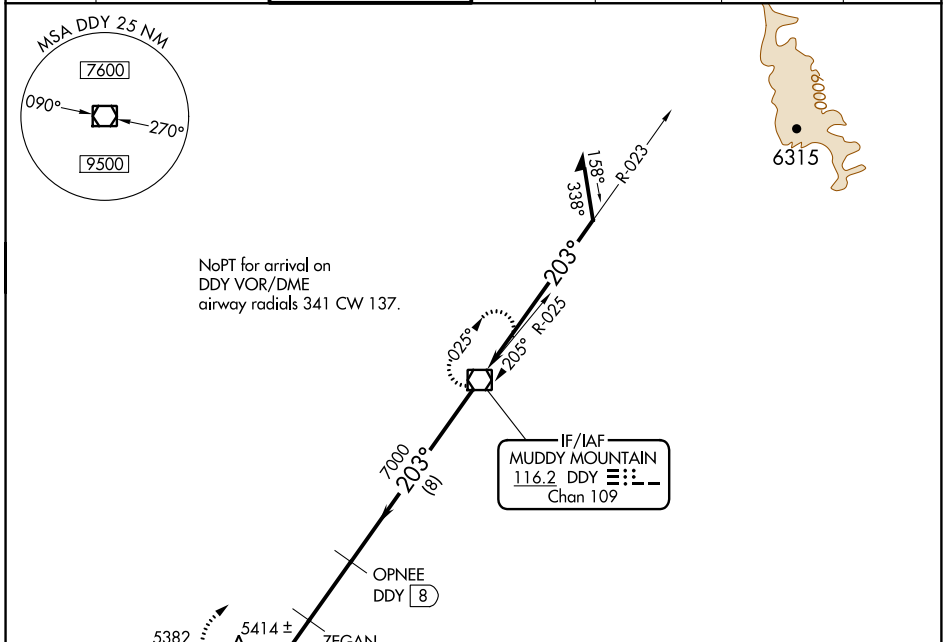
VOR/DME RWY 21

CASPER/NATRONA COUNTY INTL (CPR)

⚠ VDP NA with Douglas altimeter setting. When local altimeter setting not received, use Douglas altimeter setting: Increase all MDAs 180 feet and S-21 visibility Cats C and D ½ mile, Circling visibility Cats C and D ¼ mile.

⚠ MISSED APPROACH: Climbing right turn to 7600 direct DDY VOR/DME and hold.

ATIS 126.15	CASPER APP CON * 120.65 354.1	CASPER TOWER * 118.3 (CTAF) 257.8	GND CON 121.9	CLNC DEL 121.9 257.8	CASPER RADIO 122.4 255.4	UNICOM 122.95
-----------------------	-----------------------------------------	---------------------------------------------	-------------------------	--------------------------------	------------------------------------	-------------------------



7600 DDY

DDY 12.1

ZEGAN DDY 10.5

OPNEE DDY 8

DDY VOR/DME

Remain within 10 NM

023°

203°

7800

7600

3.00° TCH 56

6180

7000

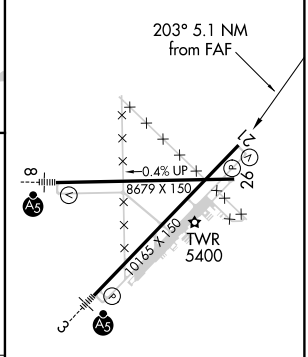
0.9

1.6 NM

2.6 NM

8 NM

ELEV	5344	D	TDZE	5330
------	------	---	------	------



CATEGORY	A	B	C	D
S-21	5680-1 350 (400-1)			
CIRCLING	5720-1 376 (400-1)	5800-1 456 (500-1)	5800-1½ 456 (500-1½)	5900-2 556 (600-2)

REIL Rwy 21 and 26
HIRL Rwy 3-21 and 8-26

NW-1, 10 OCT 2019 to 07 NOV 2019

NW-1, 10 OCT 2019 to 07 NOV 2019