

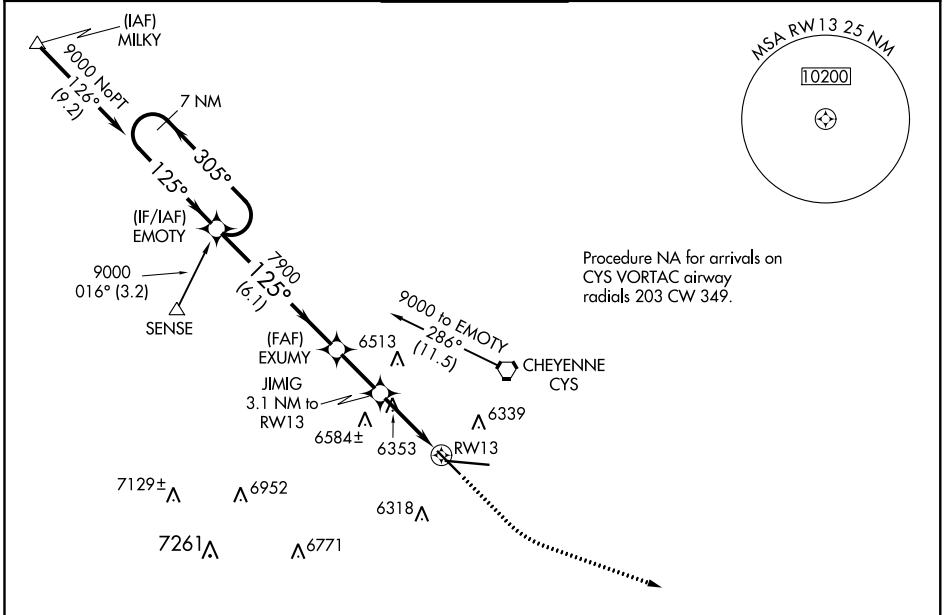
WAAS CH 56609 W13A	APP CRS 125°	Rwy ldg 4830 TDZE 6155 Apt Elev 6160
--	------------------------	---

RNAV (GPS) RWY 13

CHEYENNE RGNL/JERRY OLSON FIELD (CYS)

RNP APCH.	<p>▼ For uncompensated Baro-VNAV systems, LNAV/VNAV NA below -24°C or above 45°C. Rwy 13 helicopter visibility reduction below 3/4 SM NA.</p> <p>▲ ASR/PAR</p>		<p>MISSED APPROACH: Climb to 6600, then climbing left turn to 8500 direct HAMER and hold.</p>	
-----------	--	--	---	--

ATIS 134.425 278.3	CHEYENNE APP CON* 124.55 263.075	CHEYENNE TOWER* 118.7 (CTAF) 0 257.8	GND CON 121.9 254.275	UNICOM 122.95
------------------------------	--	--	---------------------------------	-------------------------



NW-1, 10 OCT 2019 to 07 NOV 2019

NW-1, 10 OCT 2019 to 07 NOV 2019

ELEV 6160 **D** TDZE 6155 ▲7002

REIL Rwy 9, 13 and 31 **1**
HIRL Rwy 9-27 **1**
MIRL Rwy 13-31 **1**

7 NM Holding Pattern EMOTY		6600	8500	HAMER
<p>9000 ← 305° → 125° → 7900</p> <p>GP 3.00° TCH 55</p>		<p>▲</p>	<p>△</p>	<p>△</p>
<p>JIMIG 3.1 NM to RWY 13</p> <p>* 1.3 NM to RWY 13</p>		*LNAV only		
<p>6.1 NM</p>	<p>2.2 NM</p>	<p>1.8</p>	<p>1.3</p>	
CATEGORY	A	B	C	D
LPV DA	6405-3/4 250 (300-3/4)			
LNAV/VNAV DA	6419-7/8 264 (300-7/8)			
LNAV MDA	6620-1 465 (500-1)	6620-1 3/8 465 (500-1 3/8)		
C CIRCLING	6640-1 480 (500-1)	6900-2 740 (800-2)	6920-2 1/2 760 (800-2 1/2)	