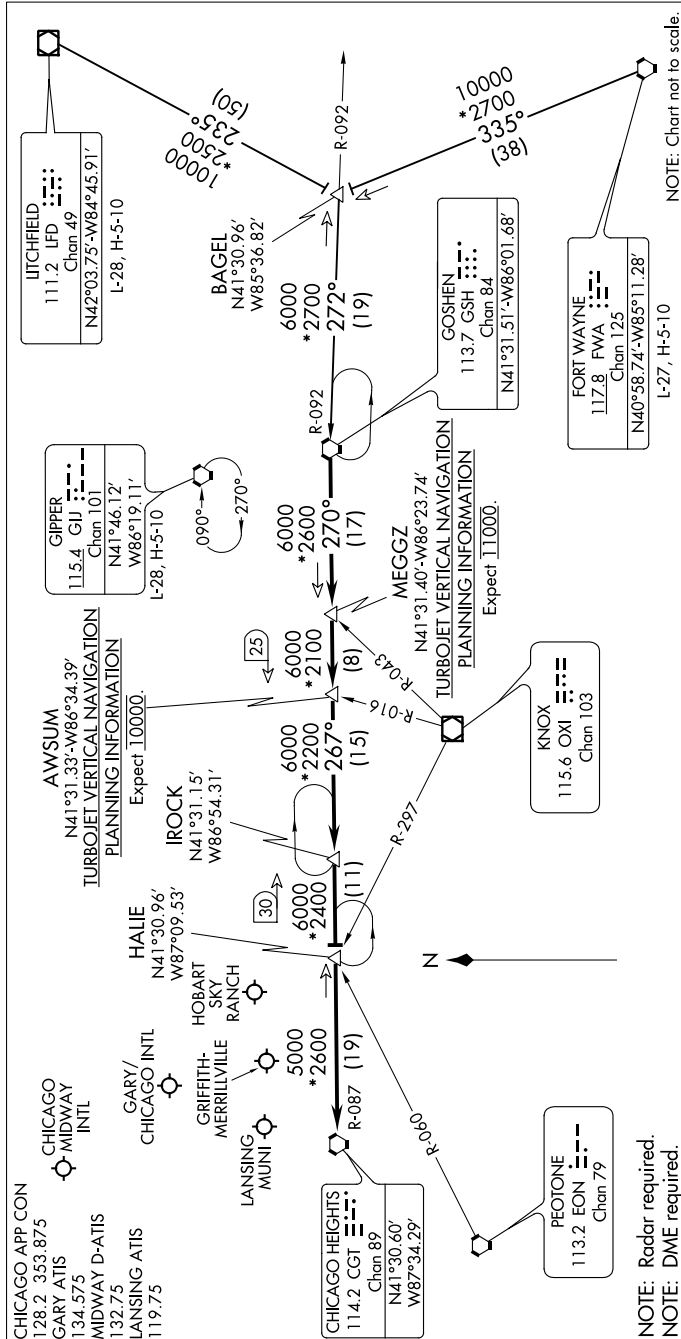


GOSHEN SEVEN ARRIVAL

EC-3, 10 OCT 2019 to 07 NOV 2019



NOTE: Chart not to scale.

ARRIVAL ROUTE DESCRIPTION

FORT WAYNE TRANSITION (FWA.GSH7): From over FWA VORTAC on FWA R-335 to BAGEL then on GSH R-092 to GSH VORTAC. Thence...

IITCHFIELD TRANSITION (LFD.GSH7): From over LFD VOR/DME on LFD R-235 to BAGEL then on GSH R-092 to GSH VORTAC. Thence....

....From over GSH VORTAC on GSH R-270 to MEGGZ, then on GSH R-270 to AWSUM, then on GSH R-270 and CGT R-087 to IROCK, then on CGT R-087 to HALIE INT, then on CGT R-087 to CGT VORTAC. Expect radar vectors to final approach course.

EC-3, 10 OCT 2019 to 07 NOV 2019

GOSHEN SEVEN ARRIVAL