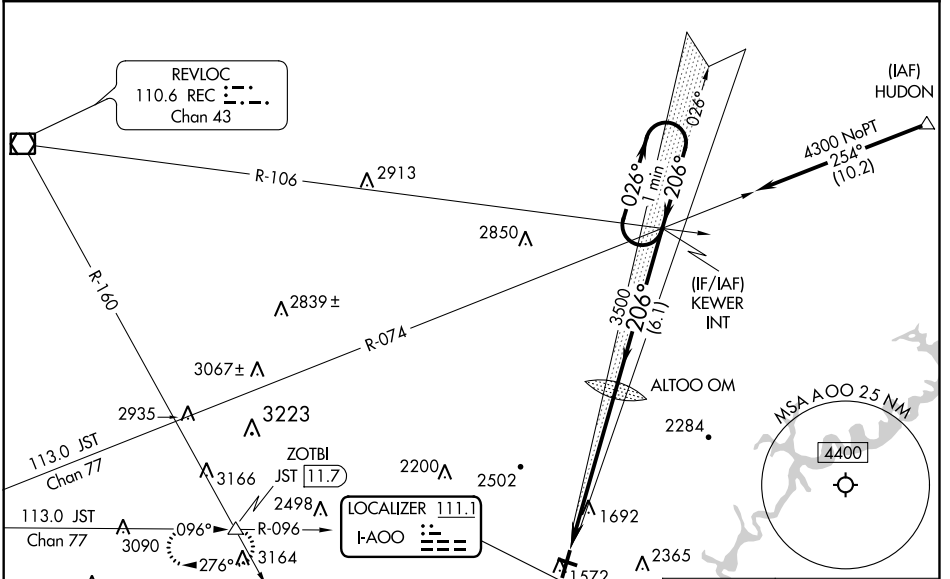


LOC I-AOO 111.1	APP CRS 206°	Rwy ldg TDZE Apt Elev	5465 1486 1503
---------------------------	------------------------	-----------------------------	---

ILS or LOC RWY 21

ALTOONA-BLAIR COUNTY (A00)

<p>⚠ Circling NA for Cats C, D northwest of Rwy 12 and 21. For inoperative ALS increase S-LOC 21 visibility Cats C and D to 2½ miles. Circling Rwy 3, 12, 30 NA at night.</p>		<p>MALSR</p>	<p>MISSED APPROACH: Climb to 2100, then climbing right turn to 5000 on heading 295° and JST R-096 to ZOTBI INT/JST 11.7 DME and hold, continue climb-in-hold to 5000.</p>
ASOS 127.125	JOHNSTOWN APP CON * 121.2 299.2	CTAF 123.60	UNICOM 123.0



ELEV 1503	D	TDZE 1486
-----------	----------	-----------

206° 6 NM from FAF

1469

1551

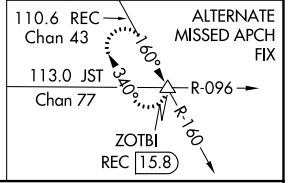
1573

1580

1517

3668 X 75

3465 X 100



2100	5000	JST R-096	ZOTBI INT	KEWER INT	One Minute Holding Pattern
------	------	-----------	-----------	-----------	----------------------------

2100

5000

hdg 295°

ALTOO OM

3473

206°

3500

4300

GS 3.00°

TCH 52

6 NM

6.1 NM

CATEGORY	A	B	C	D
S-ILS 21		1686-1/2	200 (200-1/2)	
S-LOC 21	2240-1/2 754 (800-1/2)	2240-3/4 754 (800-3/4)	2240-1 3/4	754 (800-1 3/4)
C CIRCLING	2240-1 737 (800-1)	2240-1 1/4 737 (800-1 1/4)	2800-3 1297 (1300-3)	2840-3 1337 (1400-3)

FAF to MAP 6 NM					
Knots	60	90	120	150	180
Min:Sec	6:00	4:00	3:00	2:24	2:00

HIRL Rwy 3-21

MIRL Rwy 12-30

REIL Rwy 3, 12 and 30

NE-4, 10 OCT 2019 to 07 NOV 2019

NE-4, 10 OCT 2019 to 07 NOV 2019