

WAAS CH 82030 W03B	APP CRS 041°	Rwy Idg TDZE 1503 Apt Elev 1503
--	------------------------	---

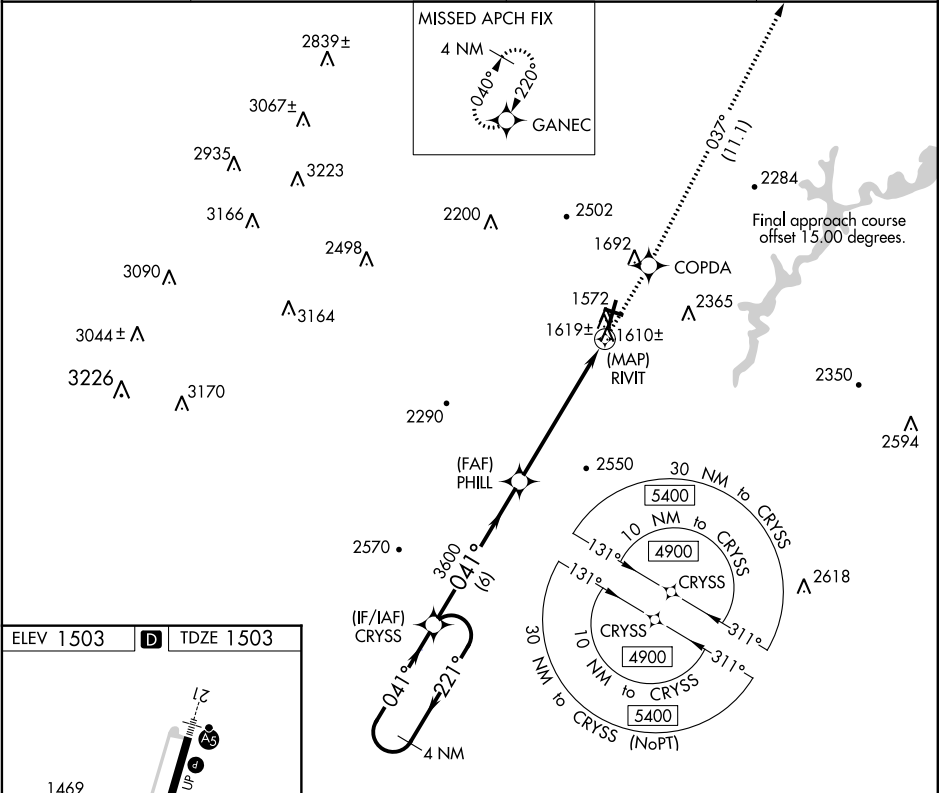
RNAV (GPS) Y RWY 3

ALTOONA-BLAIR COUNTY (A00)

⚠ DME/DME RNP-0.3 NA. When local altimeter setting not received, use Bedford County altimeter setting and increase all MDA 100 feet, increase LNAV and LP Cat C, D visibilities $\frac{3}{8}$ mile and increase Circling Cat A, B, C visibilities $\frac{1}{4}$ mile. Rwy 3, helicopter visibility reduction below $\frac{3}{4}$ SM NA. Circling NA to Rwys 12 and 30. VDP NA when using Bedford County altimeter setting.

MISSED APPROACH: Climb to 5000 direct COPDA on track 037° to GANEC and hold, continue climb-in-hold to 5000.

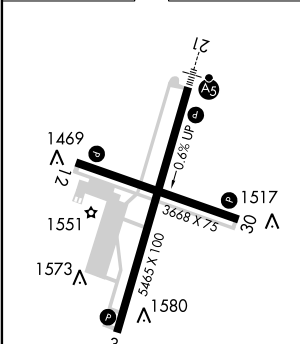
ASOS 127.125	JOHNSTOWN APP CON * 121.2 299.2	CTAF 123.60	UNICOM 123.0
------------------------	---	-----------------------	------------------------



NE-4, 10 OCT 2019 to 07 NOV 2019

NE-4, 10 OCT 2019 to 07 NOV 2019

ELEV 1503	D	TDZE 1503
-----------	----------	-----------



4 NM Holding Pattern		CRYSS	5000	COPDA	tr 037°	GANEC
4900 ← 221°		← 041°	PHILL	0.6 NM to RIVIT	RIVIT	
		→ 041°	3600	3.00° TCH 43		
				← 6 NM	← 5.4 NM	← 0.6 0.5
CATEGORY	A	B	C	D		
LP MDA		1860-1	357 (400-1)			
LNAV MDA		1880-1	377 (400-1)			
CIRCLING	2020-1 517 (600-1)	2060-1 557 (600-1)	2060-1½ 557 (600-1½)	2620-3 1117 (1200-3)		