

VORTAC DAG <b>113.2</b> Chan 79	APP CRS <b>224°</b>	Rwy Idg TDZE Apt Elev <b>5123</b> <b>1918</b> <b>1930</b>
---------------------------------------	------------------------	--

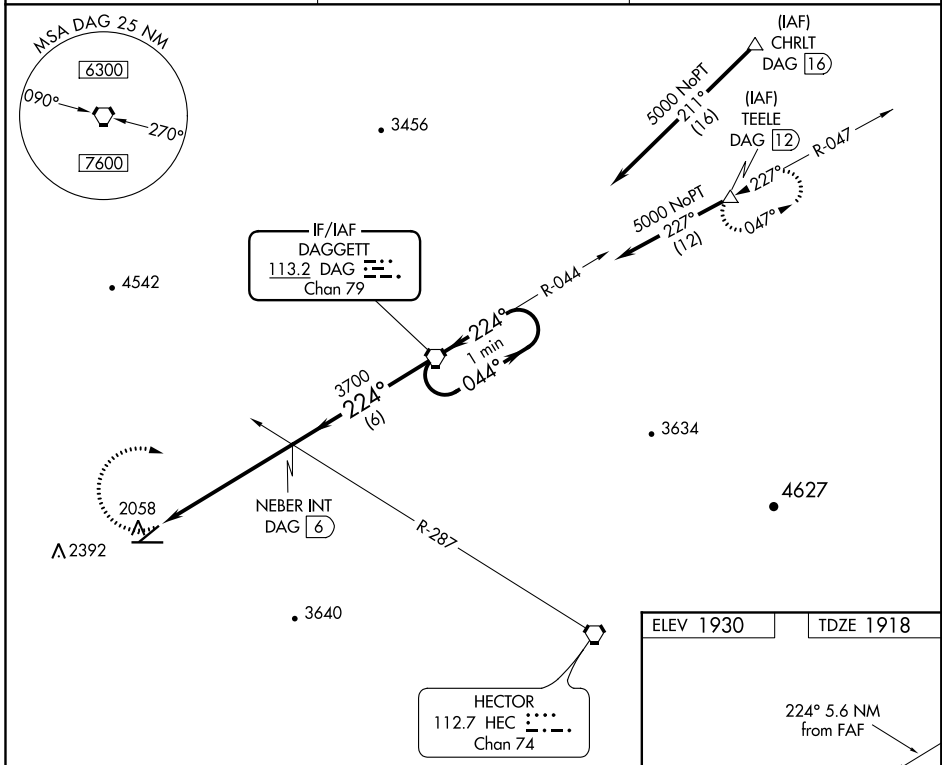
# VOR or TACAN RWY 22

BARSTOW-DAGGETT (DAG)

**⚠** Circling NA for Cat D south of Rwy 8-26.

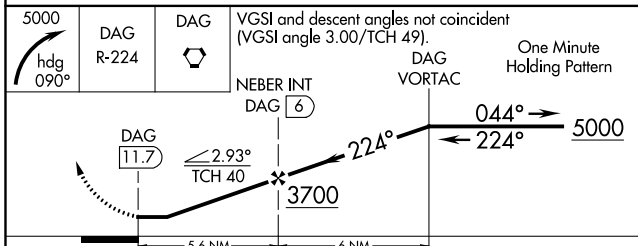
**⚠** MISSED APPROACH: Climbing right turn to 5000 via heading 090° and via DAG VORTAC R-224 to DAG VORTAC and hold (TACAN aircraft climb to 6000 via DAG VORTAC R-047 to TEELE/DAG 12 DME and hold NE, LT 227° inbound). When authorized by ATC climb in holding to 7500.

ASOS <b>132.175</b>	LOS ANGELES CENTER <b>132.5 284.7</b>	UNICOM <b>123.0 (CTAF) ①</b>
------------------------	--	---------------------------------



SW-3, 10 OCT 2019 to 07 NOV 2019

SW-3, 10 OCT 2019 to 07 NOV 2019



ELEV 1930	TDZE 1918
-----------	-----------

224° 5.6 NM from FAF

2055

1977

5123 X 100

6402 X 150

1978

0.3% UP

0.3% DOWN

MIRL Rwy 4-22 and 8-26 ①					
FAF to MAP 5.6 NM					
Knots	60	90	120	150	180
Min:Sec	5:36	3:44	2:48	2:14	1:52

CATEGORY	A	B	C	D
S-22	3160-1¼ 1242 (1300-1¼)	3440-1½ 1522 (1600-1½)	3440-3 1522 (1600-3)	3540-3 1622 (1700-3)
<b>C</b> CIRCLING	3160-1¼ 1230 (1300-1¼)	3440-1½ 1510 (1600-1½)	3500-3 1570 (1600-3)	3540-3 1610 (1700-3)