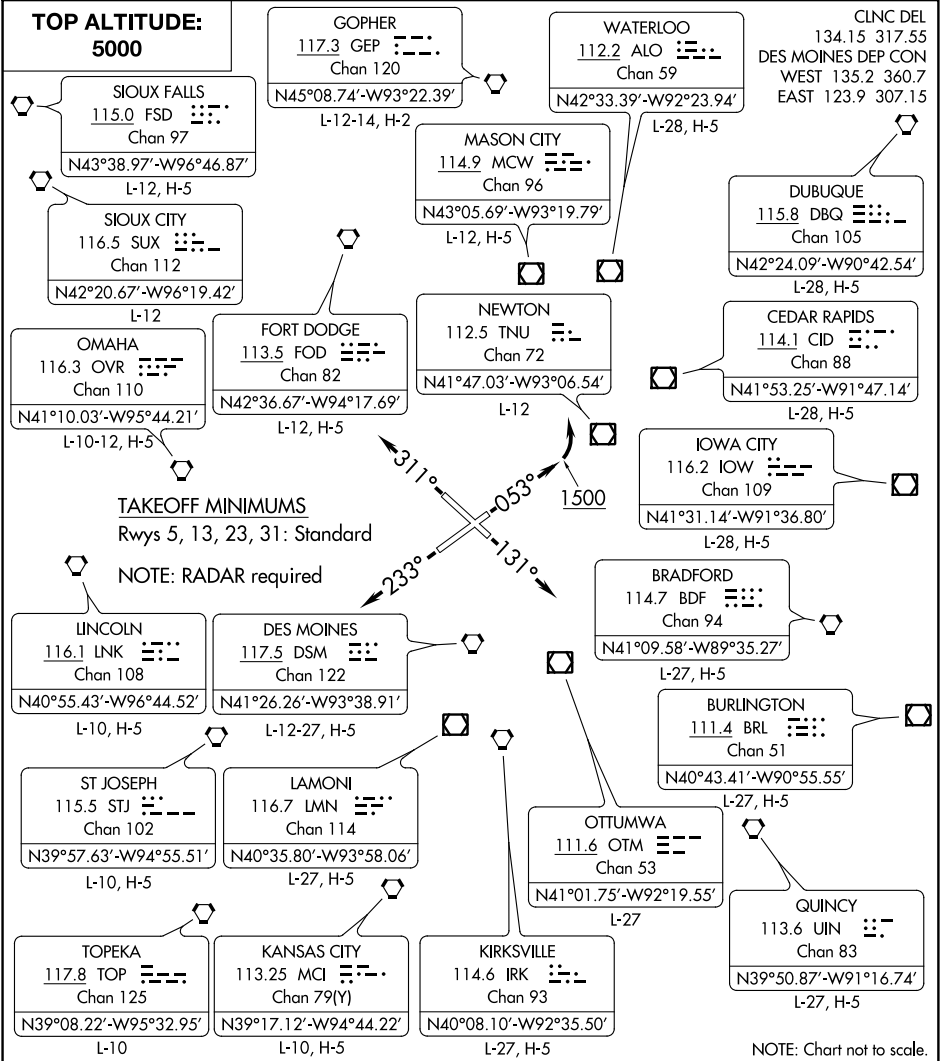


# DES MOINES NINE DEPARTURE

AL-117 (FAA)

DES MOINES INTL (DSM)  
DES MOINES, IOWA



NC-3, 10 OCT 2019 to 07 NOV 2019

NC-3, 10 OCT 2019 to 07 NOV 2019

**DEPARTURE ROUTE DESCRIPTION**

**TAKEOFF RWY 5:** Climb heading 053° to 1500 before turning left for RADAR vectors to assigned route/fix, thence . . .

**TAKEOFF RWY 13:** Climb heading 131° for RADAR vectors to assigned route/fix, thence . . .

**TAKEOFF RWY 23:** Climb heading 233° for RADAR vectors to assigned route/fix, thence . . .

**TAKEOFF RWY 31:** Climb heading 311° for RADAR vectors to assigned route/fix, thence . . .

. . . maintain 5000 or assigned lower altitude.

Expect clearance to filed altitude 10 minutes after departure.