

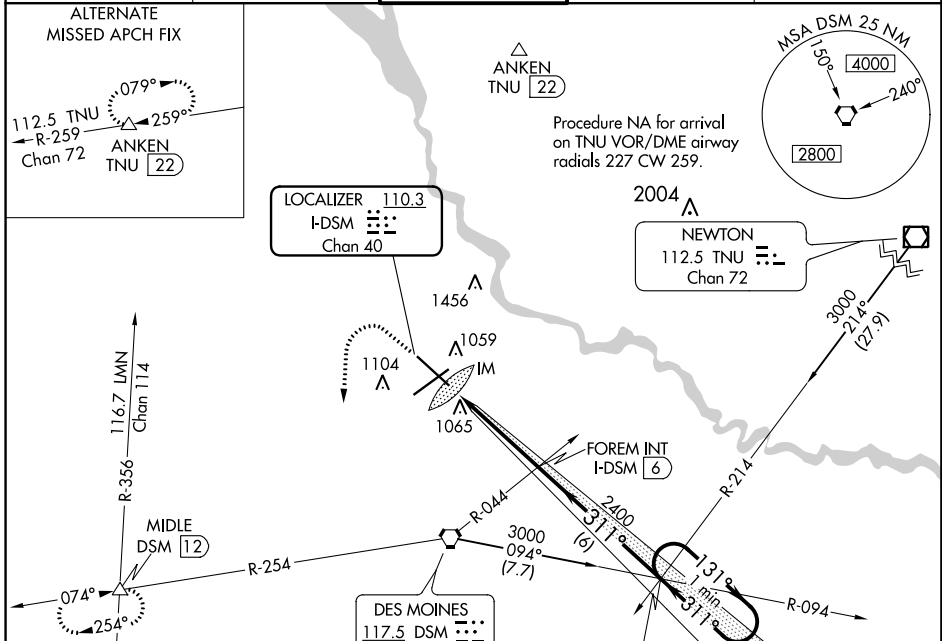
LOC/DME I-DSM <b>110.3</b> Chan <b>40</b>	APP CRS <b>311°</b>	Rwy Idg TDZE Apt Elev	<b>9001</b> <b>958</b> <b>958</b>
---	------------------------	-----------------------------	---

# ILS RWY 31 (CAT II & III)

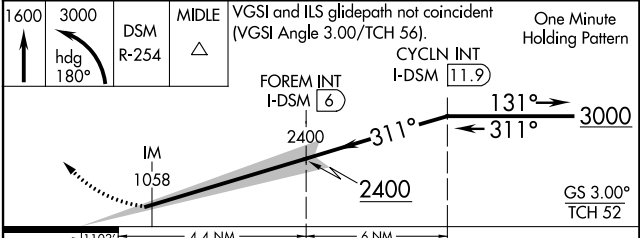
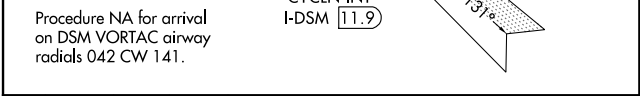
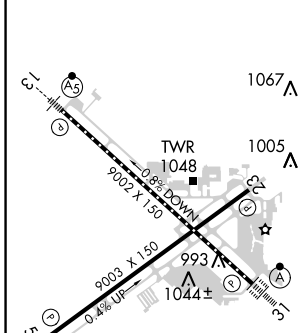
DES MOINES INTL (DSM)

		MISSED APPROACH: Climb to 1600 then climbing left turn to 3000 on heading 180° on DSM VORTAC R-254 to MIDDLE INT/12 DME and hold.		
--	--	---	--	--

ATIS <b>119.55</b>	DES MOINES APP CON <b>123.9 307.15</b>	DES MOINES TOWER <b>118.3 257.8</b>	GND CON <b>121.9 348.6</b>	CLNC DEL <b>134.15 317.55</b>
-----------------------	---	--	-------------------------------	----------------------------------



ELEV 958	<b>D</b>	TDZE 958
----------	----------	----------



CATEGORY	A	B	C	D
S-ILS 31	CAT II RA 101/12		100 DA 1058	
S-ILS 31	CAT III RVR 06			

## CATEGORY II & III ILS - SPECIAL AIRCREW & AIRCRAFT CERTIFICATION REQUIRED

NC-3, 10 OCT 2019 to 07 NOV 2019

NC-3, 10 OCT 2019 to 07 NOV 2019