


LOC/DME I-VGU 111.9 Chan 56	APP CRS 131°	Rwy Idg TDZE Apt Elev	9001 922 958
---	------------------------	-----------------------------	---

ILS or LOC RWY 13

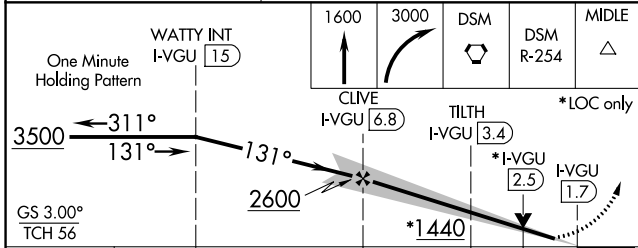
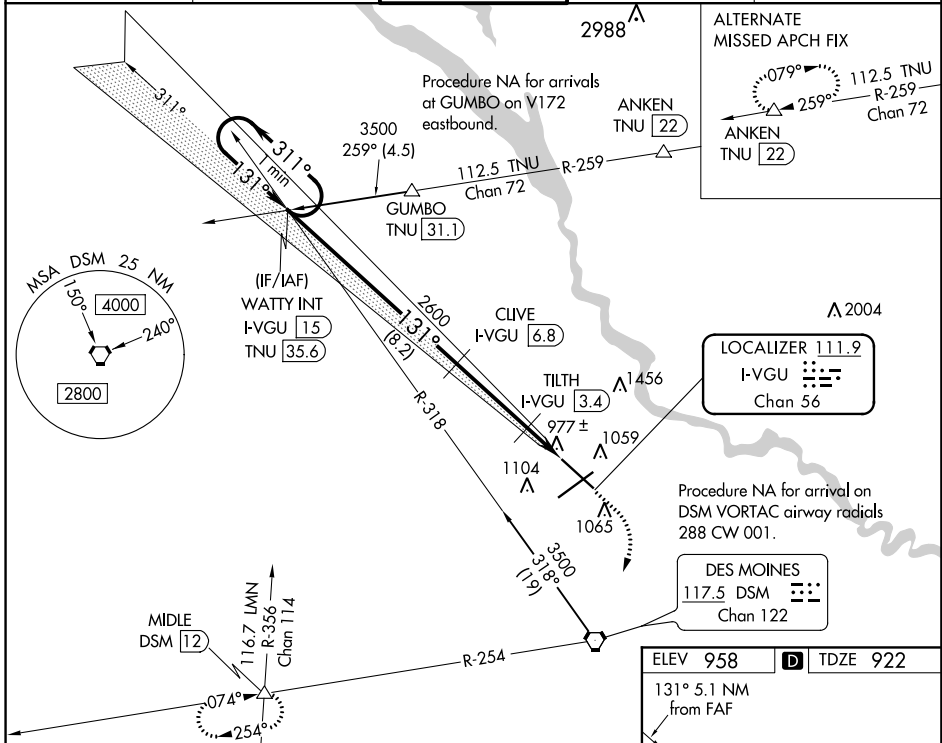
DES MOINES INTL (DSM)

DME required. For inop ALS, increase S-LOC 13 Cats C/D visibility to RVR 4500.
#RVR 1800 authorized with use of FD or AP or HUD to DA.

MALSR 

MISSED APPROACH: Climb to 1600 then climbing right turn to 3000 direct DSM VORTAC then on DSM VORTAC R-254 to MIDDLE INT/DSM 12 DME and hold.

ATIS 119.55	DES MOINES APP CON 123.9 307.15	DES MOINES TOWER 118.3 257.8	GND CON 121.9 348.6	CLNC DEL 134.15 317.55
-----------------------	---	--	-------------------------------	----------------------------------



CATEGORY	A	B	C	D
S-ILS 13#	1122/24		200 (200-½)	
S-LOC 13	1240/24		318 (300-½)	
C CIRCLING	1420-1	462 (500-1)	1600-1¾ 642 (700-1¾)	1760-2½ 802 (900-2½)

ELEV 958 **D** TDZE 922

131° 5.1 NM from FAF

1067 Δ

1005 Δ

TWR 1048

993 Δ

1044± Δ

REIL Rwy 23 TDZ/CL Rwy 31

HIRL Rwys 13-31 and 5-23

FAF to MAP 5.1 NM

Knots	60	90	120	150	180
Min:Sec	5:06	3:24	2:33	2:02	1:42

0.8% DOWN

9003 X 150

0.4% UP

NC-3, 10 OCT 2019 to 07 NOV 2019

NC-3, 10 OCT 2019 to 07 NOV 2019