



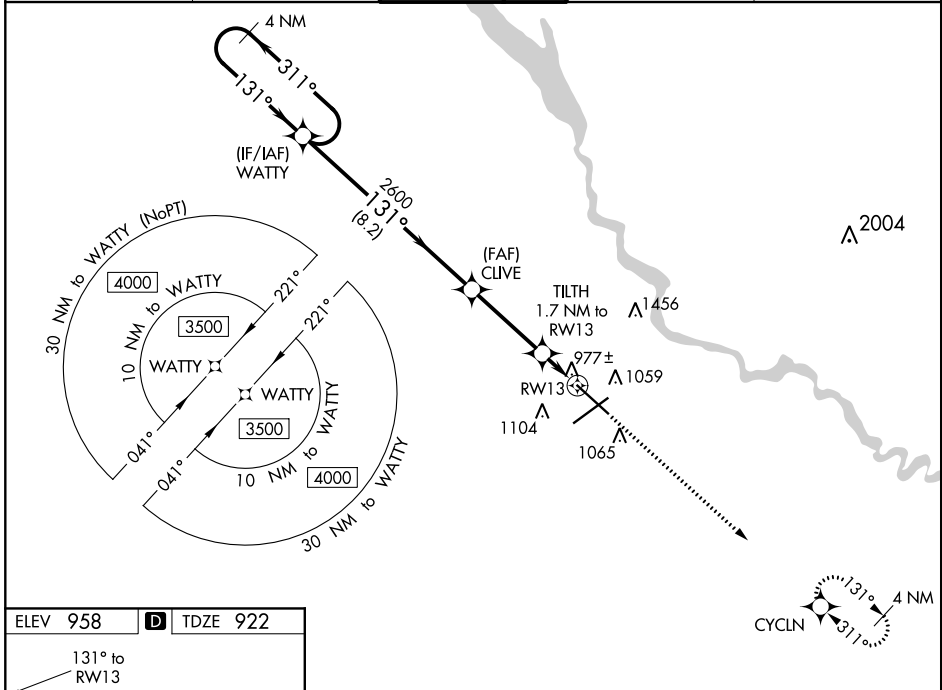
WAAS CH 72602 W13A	APP CRS 131°	Rwy Idg 9001 TDZE 922 Apt Elev 958
--	------------------------	---

RNAV (GPS) RWY 13

DES MOINES INTL (DSM)

<p>⚠ For uncompensated Baro-VNAV systems, LNAV/VNAV NA below -19°C (-2°F) or above 54°C (130°F). DME/DME RNP-0.3 NA. For inop ALS, increase LNAV/VNAV all Cats visibility to RVR 4000 and LNAV Cats C and D visibility to RVR 4500. # RVR 1800 authorized with use of FD or AP or HUD to DA.</p>	<p>MALSR</p> 	<p>MISSED APPROACH: Climb to 3000 direct CYCLN and hold.</p>
		

ATIS 119.55	DES MOINES APP CON 123.9 307.15	DES MOINES TOWER 118.3 257.8	GND CON 121.9 348.6	CLNC DEL 134.15 317.55
-----------------------	---	--	-------------------------------	----------------------------------

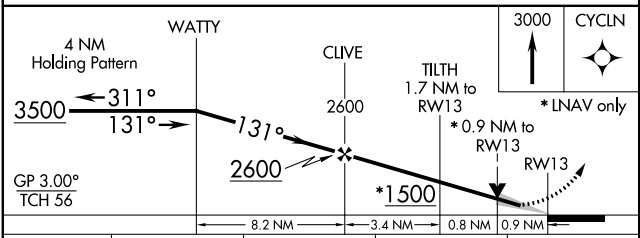


NC-3, 10 OCT 2019 to 07 NOV 2019

NC-3, 10 OCT 2019 to 07 NOV 2019

ELEV 958	D TDZE 922
----------	-------------------

REIL Rwy 23
TDZ/CL Rwy 31
HIRL Rws 13-31 and 5-23



CATEGORY	A	B	C	D
LPV DA#		1122/24	200 (200-1/2)	
LNAV/VNAV DA		1172/24	250 (300-1/2)	
LNAV MDA		1240/24	318 (300-1/2)	
C CIRCLING	1420-1	462 (500-1)	1600-1 ³ / ₄ 642 (700-1 ³ / ₄)	1760-2 ¹ / ₂ 802 (900-2 ¹ / ₂)