

WAAS CH 97541 W23A	APP CRS 233°	Rwy Idg TDZE Apt Elev	9003 939 958
--	------------------------	-----------------------------	---

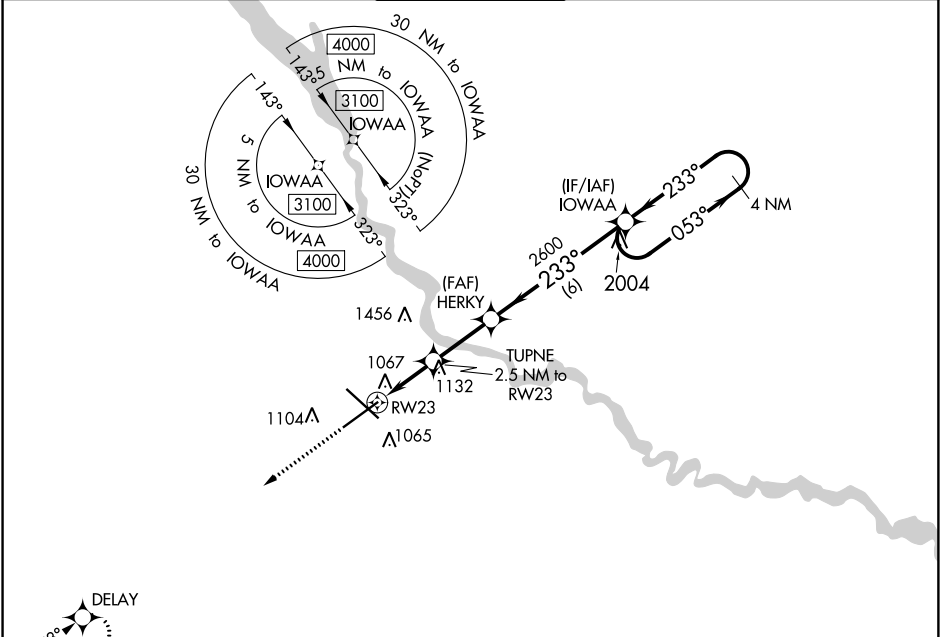
RNAV (GPS) RWY 23

DES MOINES INTL (DSM)

▼ For uncompensated Baro-VNAV systems, LNAV/VNAV NA below -19°C (-2°F) or above 54°C (130°F). Rwy 23 helicopter visibility reduction below ¾ SM NA. DME/DME RNP-0.3 NA.

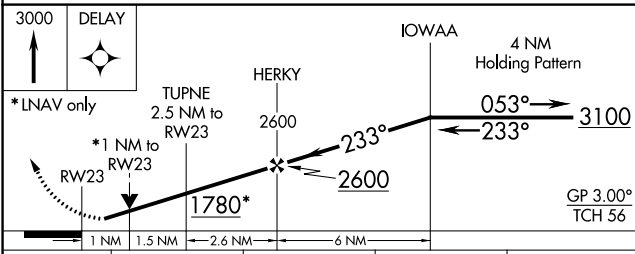
▲ MISSED APPROACH: Climb to 3000 direct DELAY and hold.

ATIS 119.55	DES MOINES APP CON 123.9 307.15	DES MOINES TOWER 118.3 257.8	GND CON 121.9 348.6	CLNC DEL 134.15 317.55
-----------------------	---	--	-------------------------------	----------------------------------

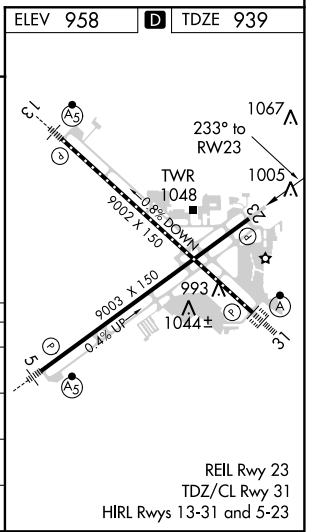


NC-3, 10 OCT 2019 to 07 NOV 2019

NC-3, 10 OCT 2019 to 07 NOV 2019



CATEGORY	A	B	C	D
LPV DA	1262-1 323 (400-1)			
LNAV/VNAV DA	1242-7/8 303 (300-7/8)			
LNAV MDA	1320-1 381 (400-1)	1320-1 1/8 381 (400-1 1/8)		
C CIRCLING	1420-1 462 (500-1)	1600-1 3/4 642 (700-1 3/4)	1760-2 1/2 802 (900-2 1/2)	



REIL Rwy 23
TDZ/CL Rwy 31
HIRL Rwys 13-31 and 5-23