

WAAS CH <b>78002</b> <b>W31A</b>	APP CRS <b>311°</b>	Rwy Idg <b>9001</b> TDZE <b>958</b> Apt Elev <b>958</b>
--	------------------------	---

# RNAV (GPS) RWY 31

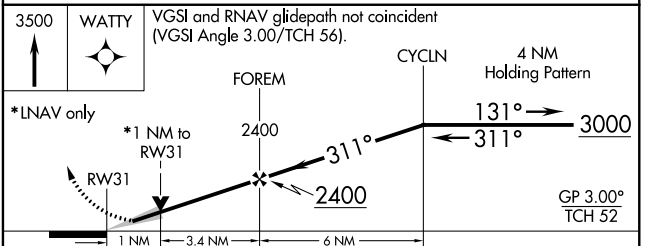
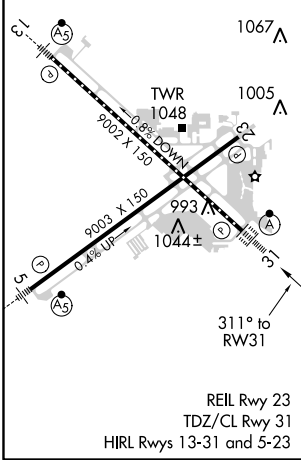
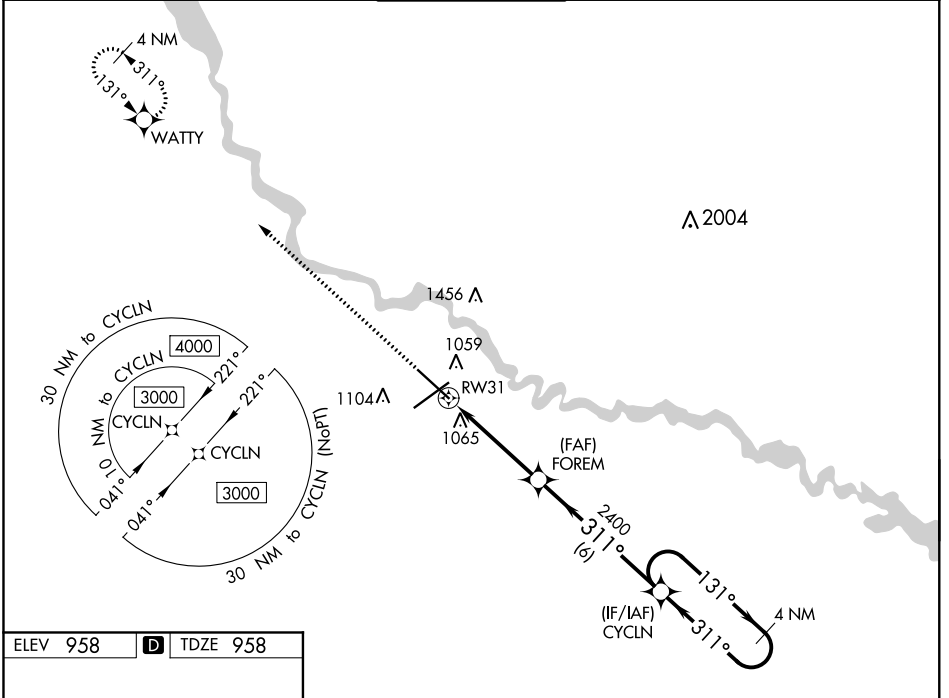
DES MOINES INTL (DSM)

**⚠** For uncompensated Baro-VNAV systems, LNAV/VNAV NA below -20°C (-4°F) or above 54°C (130°F). DME/DME RNP-0.3 NA.  
For inop ALS, increase LNAV Cats C/D visibility to RVR 5500.

ALSF-2

MISSED APPROACH: Climb to 3500 direct WATTY and hold.

ATIS <b>119.55</b>	DES MOINES APP CON <b>123.9 307.15</b>	DES MOINES TOWER <b>118.3 257.8</b>	GND CON <b>121.9 348.6</b>	CLNC DEL <b>134.15 317.55</b>
-----------------------	---	--	-------------------------------	----------------------------------



CATEGORY	A	B	C	D
LPV DA		1158/18	200 (200-½)	
LNAV/VNAV DA		1354/35	396 (400-⅝)	
LNAV MDA	1320/24	362 (400-½)	1320/35	362 (400-⅝)
<b>C</b> CIRCLING	1420-1	462 (500-1)	1600-1¾ 642 (700-1¾)	1760-2½ 802 (900-2½)

NC-3, 10 OCT 2019 to 07 NOV 2019

NC-3, 10 OCT 2019 to 07 NOV 2019