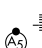


WAAS CH 69202 W05A	APP CRS 053°	Rwy Idg 9003 TDZE 931 Apt Elev 958
----------------------------------------	------------------------	---------------------------------------------------------------

RNAV (GPS) RWY 5

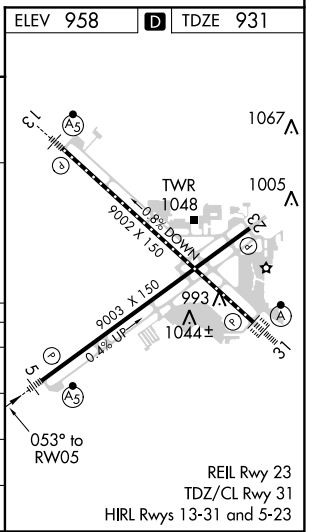
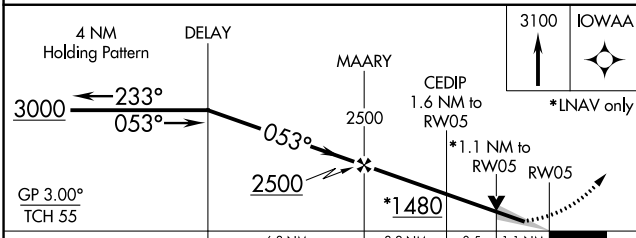
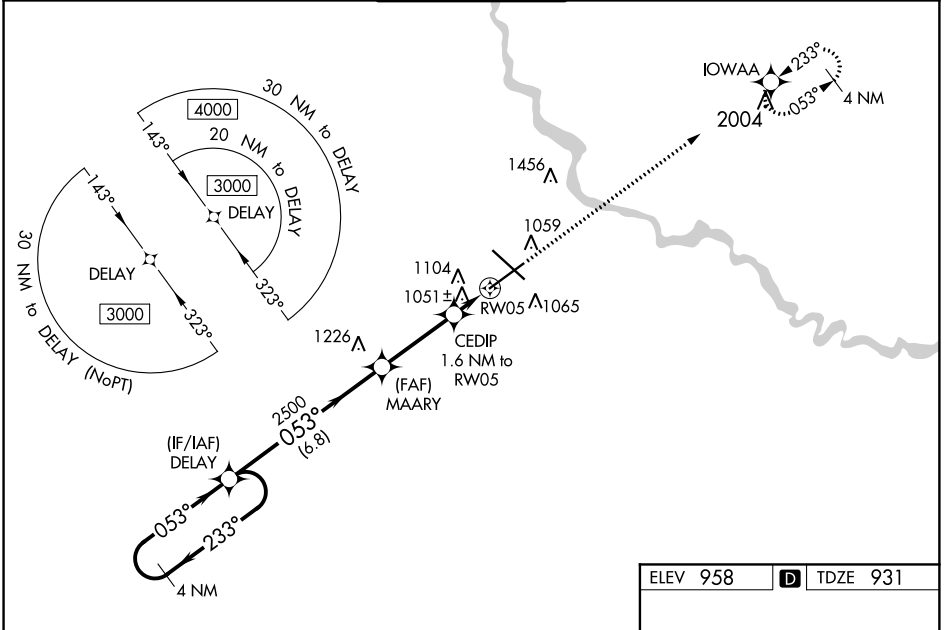
DES MOINES INTL (DSM)

⚠ For uncompensated Baro-VNAV systems, LNAV/VNAV NA below -19°C (-2°F) or above 54°C (130°F). DME/DME RNP-0.3 NA.
⚠ For inop MALSR, increase LPV all Cats visibility to RVR 4000 feet, LNAV/VNAV all Cats visibility to 1½ mile, LNAV Cats A and B visibilities to RVR 5500 feet, and LNAV Cats C and D visibilities to RVR 6000 feet.
 # RVR 1800 authorized with use of FD or AP or HUD to DA.

MALSR 

MISSED APPROACH: Climb to 3100 direct IOWAA and hold.

ATIS 119.55	DES MOINES APP CON 123.9 307.15	DES MOINES TOWER 118.3 257.8	GND CON 121.9 348.6	CLNC DEL 134.15 317.55
-----------------------	-------------------------------------------	-----------------------------------------------	-------------------------------	----------------------------------



CATEGORY	A	B	C	D
LPV DA #		1131/24	200 (200-½)	
LNAV/VNAV DA		1352/40	421 (400-¾)	
LNAV MDA	1320/24	389 (400-½)	1320/35	389 (400-⅝)
C CIRCLING	1420-1	462 (500-1)	1600-1¾ 642 (700-1¾)	1760-2½ 802 (900-2½)

NC-3, 10 OCT 2019 to 07 NOV 2019

NC-3, 10 OCT 2019 to 07 NOV 2019

REIL Rwy 23
TDZ/CL Rwy 31
HIRL Rws 13-31 and 5-23