

VOR/DME TNU <b>112.5</b> Chan <b>72</b>	APP CRS <b>236°</b>	Rwy Idg TDZE Apt Elev	<b>9003</b> <b>939</b> <b>958</b>
---	------------------------	-----------------------------	---

# VOR RWY 23

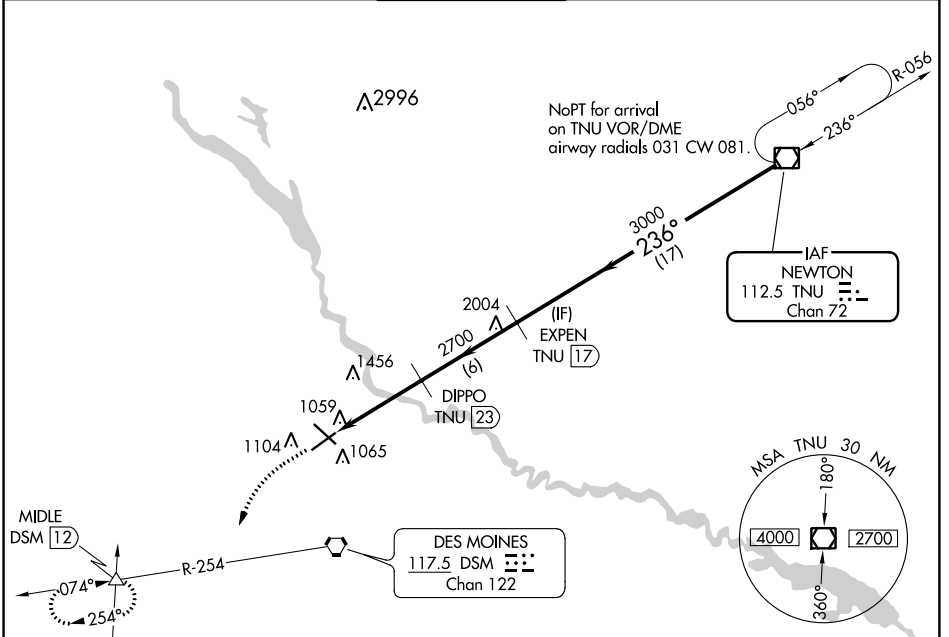
DES MOINES INTL (DSM)

DME required.

**▼** Circling Rwy 5 NA at night.  
**▲** Rwy 23 helicopter visibility reduction below 3/4 SM NA.

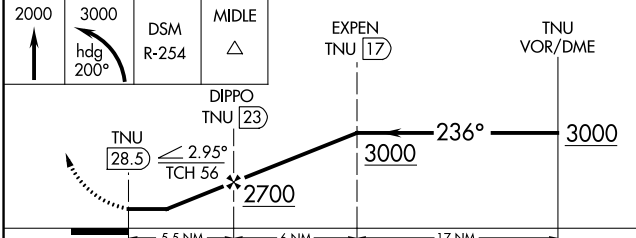
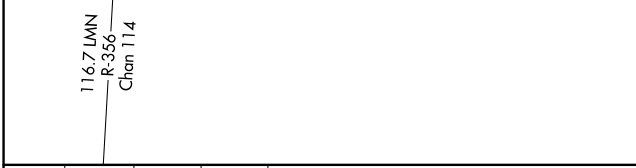
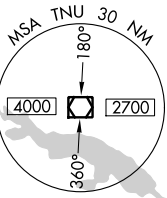
MISSED APPROACH: Climb to 2000 then climbing left turn to 3000 on heading 200° and on DSM VORTAC R-254 direct MIDLE INT/DSM 12 DME and hold.

ATIS <b>119.55</b>	DES MOINES APP CON <b>123.9 307.15</b>	DES MOINES TOWER <b>118.3 257.8</b>	GND CON <b>121.9 348.6</b>	CLNC DEL <b>134.15 317.55</b>
-----------------------	---	--	-------------------------------	----------------------------------

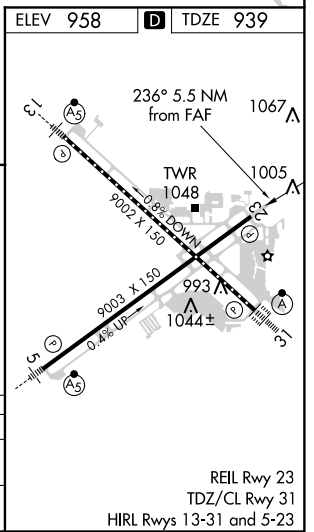


IAF  
NEWTON  
112.5 TNU  
Chan 72

DES MOINES  
117.5 DSM  
Chan 122



CATEGORY	A	B	C	D
S-23	1720-1 781 (800-1)	1720-1½ 781 (800-1¼)	1720-2½	781 (800-2½)
<b>C</b> CIRCLING	1720-1 762 (800-1)	1720-1½ 762 (800-1¼)	1720-2½	1760-2½ 802 (900-2½)



NC-3, 10 OCT 2019 to 07 NOV 2019

NC-3, 10 OCT 2019 to 07 NOV 2019

REIL Rwy 23  
TDZ/CL Rwy 31  
HIRL Rws 13-31 and 5-23