

LOC I-UEK 109.1	APP CRS 062°	Rwy ldg TDZE Apt Elev	7401 944 955
---------------------------	------------------------	-----------------------------	---

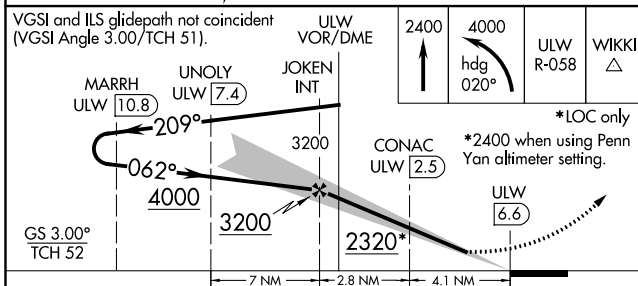
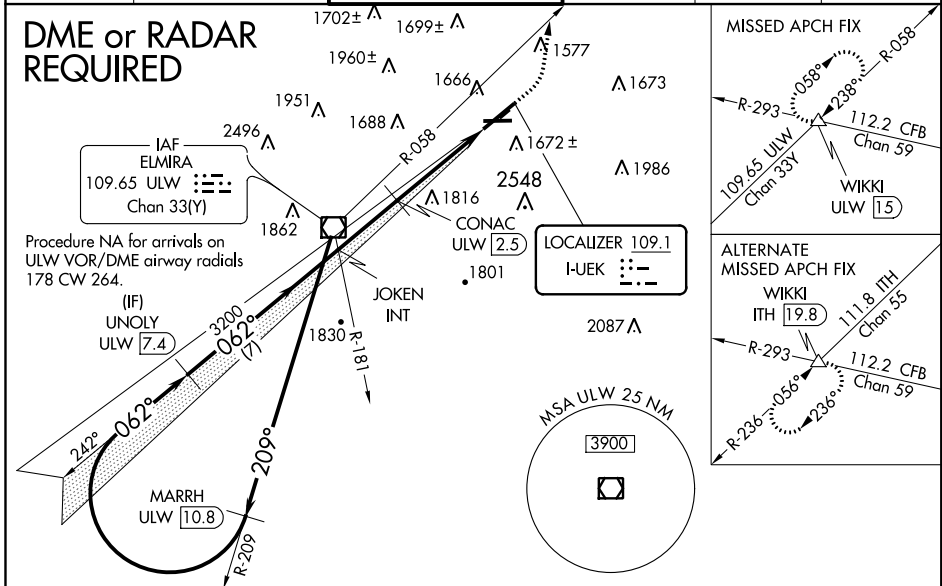
ILS or LOC RWY 6
ELMIRA/CORNING RGNL (E.L.M)

▼ Night landing: Rwy 10 NA. Inop table does not apply to S-LOC 6 Cats A/C/D. When local altimeter setting not received, use Penn Yan altimeter setting and increase all DA 73 feet and all MDA 80, and increase S-LOC 6 Cat B and CONAC fix minimums S-LOC 6 Cats C/D visibility 1/2 mile; inop table does not apply to S-LOC 6 all Cats and CONAC fix minimums S-LOC 6 Cats C/D; for inop MALSR increase S-ILS 6 all Cats visibility to 3/8 mile. **DME from ULW VOR/DME

▲ MALSR

⚠ MISSED APPROACH: Climb to 2400 then climbing left turn to 4000 on heading 020° and ULW VOR/DME R-058 and WIKKI INT/ULW 1.5 DME and hold, continue climb-in-hold to 4000.

ATIS 125.475	ELMIRA APP CON * 128.425 257.8	ELMIRA TOWER * 121.1 (CTAF) 0 257.8	GND CON 121.9	CLNC DEL 121.9	UNICOM 122.95
------------------------	--	---	-------------------------	--------------------------	-------------------------



ELEV 955 **D** TDZE 944

HIRL Rwy 6-24 **0**

MIRL Rwy 10-28

975±

TWR 1027

800' X 150'

5404 X 150'

1004±

1008±

062° 6.9 NM from FAF

FAF to MAP 6.9 NM					
Knots	60	90	120	150	180
Min:Sec	6:54	4:36	3:27	2:46	2:18

CATEGORY	A	B	C	D
S-ILS 6	1144-1/2 200 (200-1/2)			
S-LOC 6	2320-1 1/4 1376 (1400-1 1/4)	2320-1 1376 (1400-1)	2320-3	1376 (1400-3)
CIRCLING	2320-1 1/4 1365 (1400-1 1/4)	2320-1 1/2 1365 (1400-1 1/2)	2320-3	1365 (1400-3)
CONAC FIX MINIMUMS**				
S-LOC 6	2020-3/4 1076 (1100-3/4)	2020-1 1076 (1100-1)	2020-2 1/2	1076 (1100-2 1/2)
CIRCLING	2100-1 1/4 1145 (1200-1 1/4)	2100-1 1/2 1145 (1200-1 1/2)	2120-3	2160-3 1205 (1300-1)

NE-2. 10 OCT 2019 to 07 NOV 2019

NE-2. 10 OCT 2019 to 07 NOV 2019