

WAAS CH <b>70530</b> <b>W10A</b>	APP CRS <b>101°</b>	Rwy Idg TDZE Apt Elev	<b>5004</b> <b>942</b> <b>955</b>
--	------------------------	-----------------------------	---

# RNAV (GPS) RWY 10

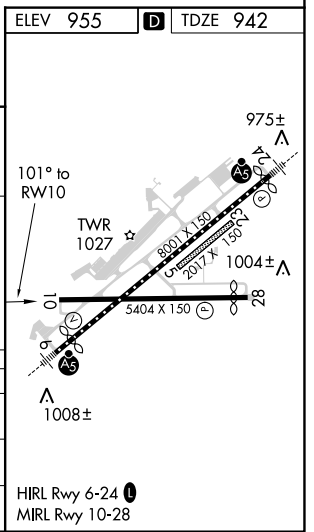
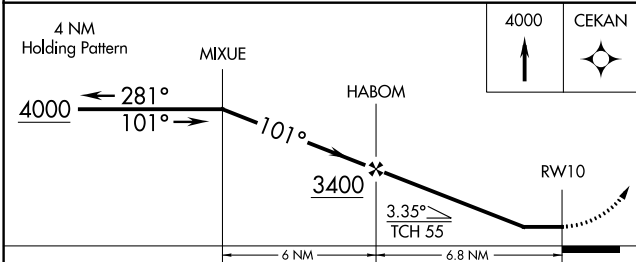
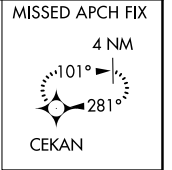
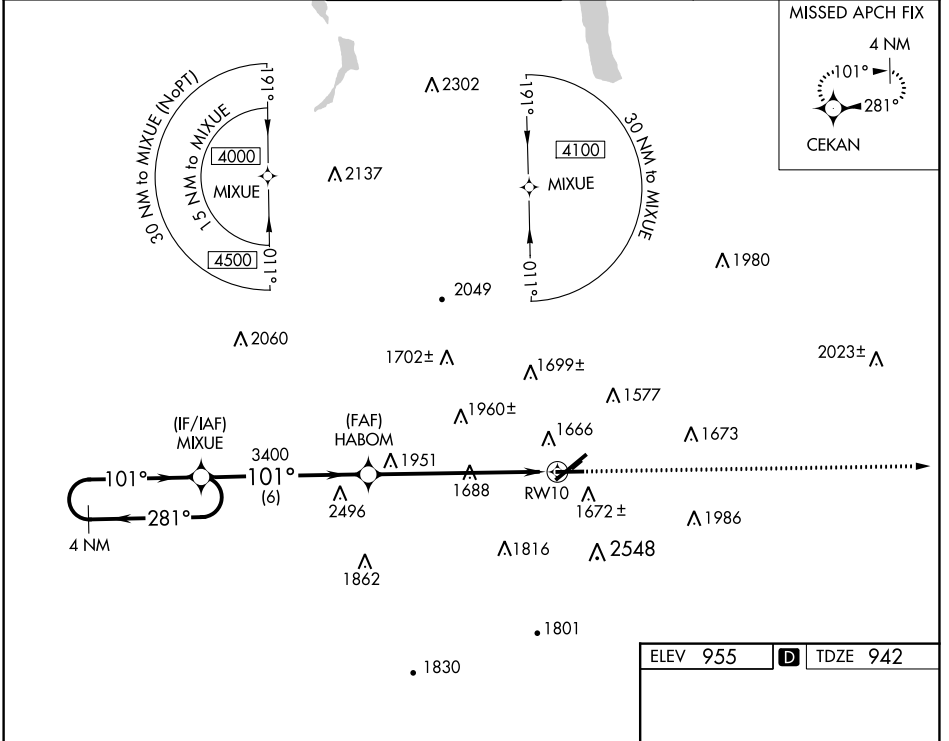
ELMIRA/CORNING RGNL (ELM)

**⚠** DME/DME RNP-0.3 NA. Helicopter visibility reduction below 1 SM NA. When local altimeter setting not received, use Penn Yan altimeter setting and increase all MDA 80 feet. Night landing: Rwy 10 NA.

**⚠** -17°C

MISSED APPROACH: Climb to 4000 direct CEKAN and hold.

ATIS <b>125.475</b>	ELMIRA APP CON* <b>128.425 257.8</b>	ELMIRA TOWER* <b>121.1 (CTAF) 0 257.8</b>	GND CON <b>121.9</b>	CLNC DEL <b>121.9</b>	UNICOM <b>122.95</b>
------------------------	---	--	-------------------------	--------------------------	-------------------------



CATEGORY	A	B	C	D
LP MDA	2280-1½ 1338 (1400-1½)	2280-1½ 1338 (1400-1½)	2280-3	1338 (1400-3)
LNAV MDA	2280-1½ 1338 (1400-1½)	2280-1½ 1338 (1400-1½)	2280-3	1338 (1400-3)
CIRCLING	2280-1½ 1325 (1400-1½)	2280-1½ 1325 (1400-1½)	2280-3	1325 (1400-3)

NE-2, 10 OCT 2019 to 07 NOV 2019

NE-2, 10 OCT 2019 to 07 NOV 2019