


WAAS CH <b>42827</b> <b>W06A</b>	APP CRS <b>062°</b>	Rwy ldg TDZE Apt Elev	<b>7401</b> <b>944</b> <b>955</b>
--	------------------------	-----------------------------	---

# RNAV (GPS) RWY 6

ELMIRA/CORNING RGNL (E.L.M)

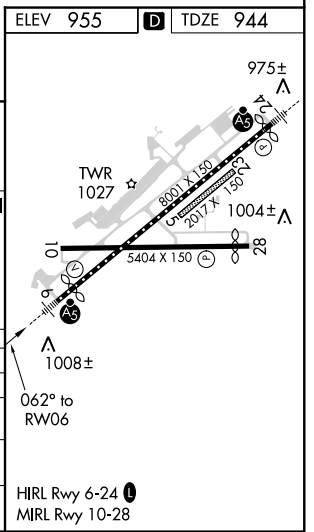
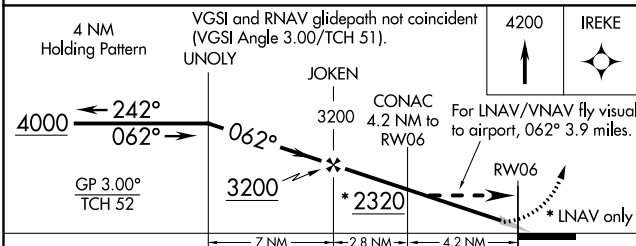
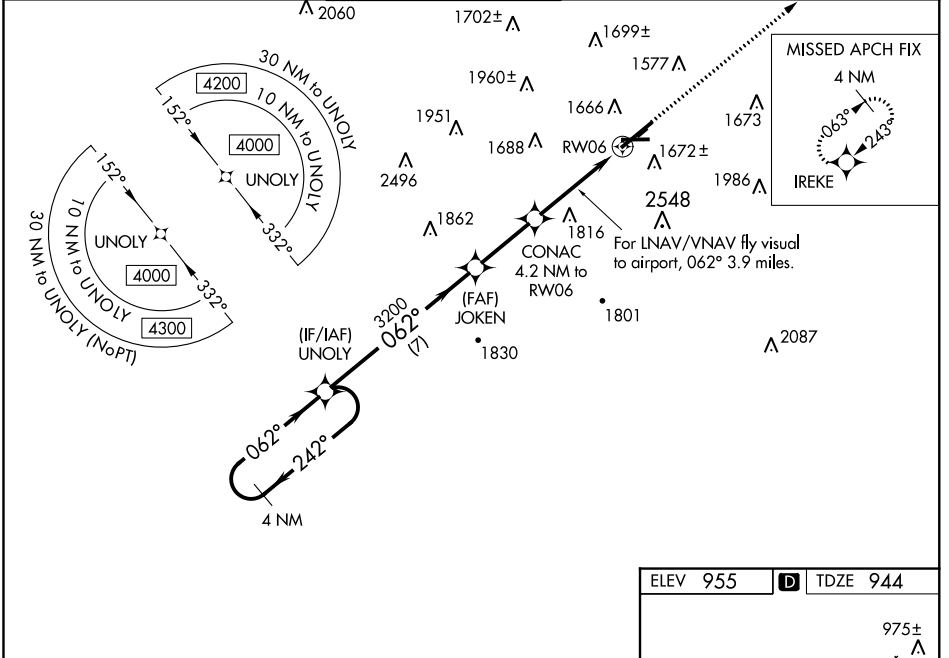
**⚠** Night landing: Rwy 10 NA. For uncompensated Baro-VNAV systems, LNAV/VNAV NA below -16°C (4°F) or above 37°C (98°F). DME/DME RNP-0.3 NA. When local altimeter setting not received, LNAV/VNAV NA. When local altimeter setting not received, use Penn Yan altimeter setting and increase LPV DA 73 feet and all MDA 80 feet, and increase LNAV Cats A/C/D visibility ½ mile; inop table does not apply to LNAV Cats A/C/D; for inop MALSR, increase LPV all Cats visibility to ¾.

**⚠** -17°C

**MALSR** 

**MISSED APPROACH:** Climb to 4200 direct IREKE and hold.

ATIS <b>125.475</b>	ELMIRA APP CON * <b>128.425 257.8</b>	ELMIRA TOWER * <b>121.1 (CTAF) 0 257.8</b>	GND CON <b>121.9</b>	CLNC DEL <b>121.9</b>	UNICOM <b>122.95</b>
------------------------	--	---	-------------------------	--------------------------	-------------------------



CATEGORY		A	B	C	D
LPV	DA	1144-1/2		200 (200-1/2)	
LNAV/VNAV	DA	2234-3		1290 (1300-3)	
LNAV	MDA	2040-3/4 1096 (1100-3/4)	2040-1 1096 (1100-1)	2040-2 1/2 1096 (1100-2 1/2)	1096 (1100-2 1/2)
CIRCLING		2100-1 1/4 1145 (1200-1 1/4)	2100-1 1/2 1145 (1200-1 1/2)	2120-3 1165 (1200-3)	2160-3 1205 (1300-3)

NE-2, 10 OCT 2019 to 07 NOV 2019

NE-2, 10 OCT 2019 to 07 NOV 2019