

WAAS CH <b>82308</b> <b>W21A</b>	APP CRS <b>207°</b>	Rwy Idg TDZE Apt Elev	<b>5500</b> <b>1276</b> <b>1276</b>
--	------------------------	-----------------------------	---

# RNAV (GPS) RWY 21

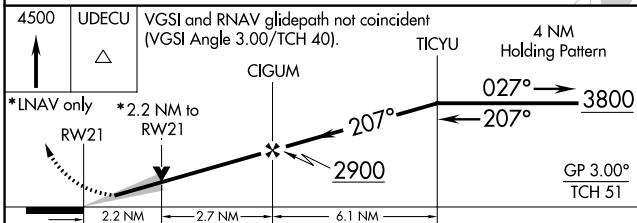
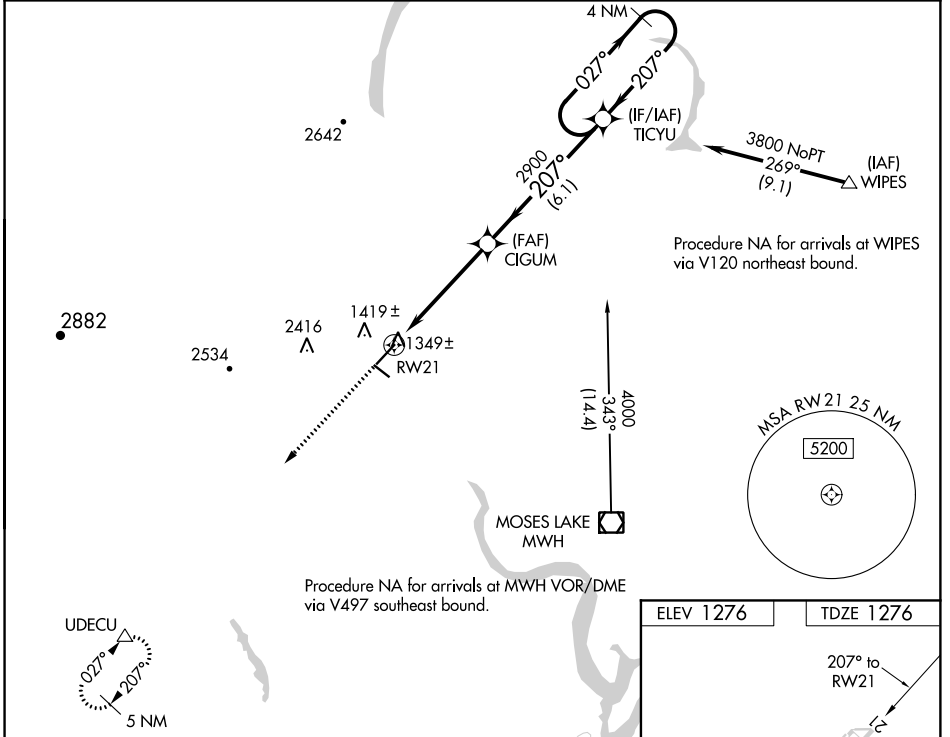
EPHRATA MUNI (EPH)

RNP APCH.

▼ For uncompensated Baro-VNAV systems, LNAV/VNAV NA below -17°C or above 46°C. VDP and Baro-VNAV NA when using Moses Lake/Grant County Intl altimeter setting. When local altimeter setting not received, use Moses Lake/Grant County Intl altimeter setting and increase all DA/MDA 40 feet; increase visibility LPV all Cats, and LNAV Cats C and D ¼ SM.

MISSED APPROACH: Climb to 4500 direct UDECU and hold.

ASOS <b>135.775</b>	GRANT COUNTY APP CON * <b>126.4 379.95</b>	UNICOM <b>122.8 (CTAF)</b>
------------------------	---	-------------------------------



ELEV 1276	TDZE 1276
-----------	-----------

Diagram details: RWY 21 length 3843 X 30. MDA values: 1334 (A), 1347 X 160 (B), 1350 X 175 (C), 1363 X 190 (D). GP 3.00°, TCH 51. REIL Rwy 3, 11, 21 and 29. MIRL Rwy 11-29 and 3-21.

CATEGORY	A	B	C	D
LPV DA		1526-¾	250 (300-¾)	
LNNAV/VNAV DA		2171-4	895 (900-4)	
LNNAV MDA	2020-1 744 (800-1)	2020-1¼ 744 (800-1¼)	2020-2¼ 744 (800-2¼)	2020-2½ 744 (800-2½)

NW-1, 10 OCT 2019 to 07 NOV 2019

NW-1, 10 OCT 2019 to 07 NOV 2019